

vitrogres

SERIES

CATÁLOGO

CATALOGUE



vitrogres

DEDICADO A SILVIA LOPEZ



CONSTELACIONES by DANIEL CANOGAR (Madrid)

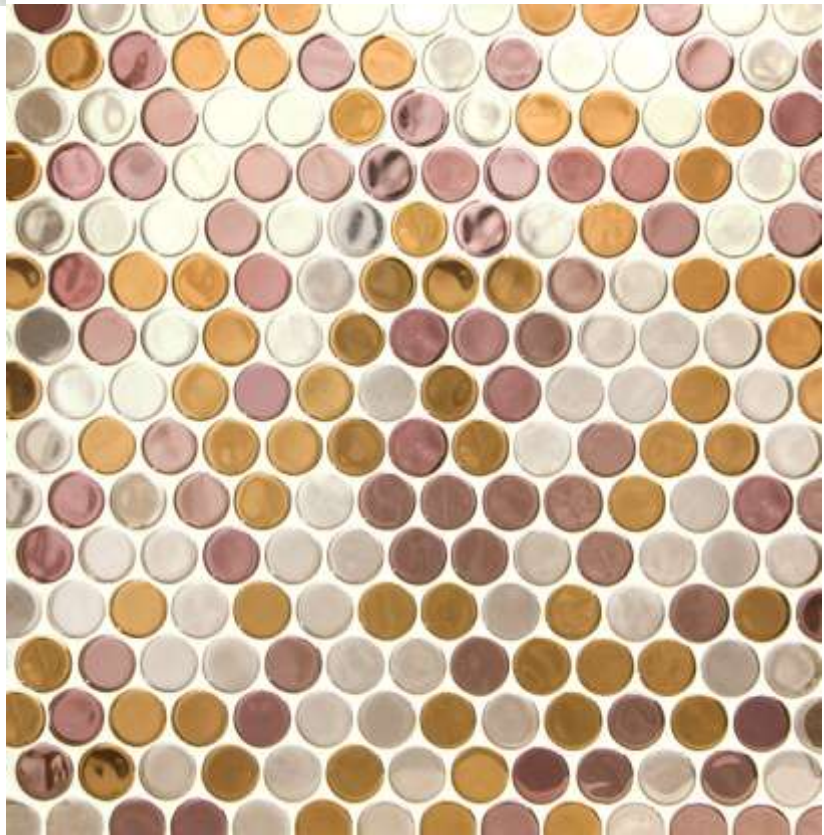
PRESENTACIÓN INTRODUCTION



VITROGRES

Marca líder durante décadas en la innovación en mosaico de vidrio, continua innovando en diseño manteniendo el mas alto nivel de calidad y compromiso ecológico.

Industry-leading brand in innovation for decades in glass mosaic, Vitrogres keeps on innovating in design, while preserving the highest level of quality and ecological commitment.





FORMATOS/SIZES

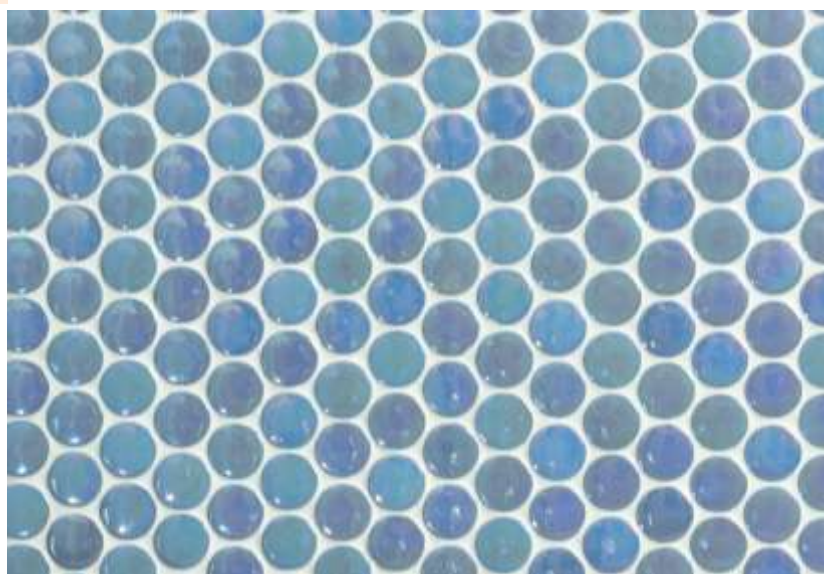
VITROGRES LE PROPONE LA GAMA MÁS AMPLIA DEL MERCADO / THE WIDEST RANGE IN THE MARKET

p. 5

COLORES Y ACABADOS / COLOURS & FINISHES

NUESTRAS GAMAS COMBINABLES ENTRE SI / COLOUR SCHEMES TO COMBINE

p. 14

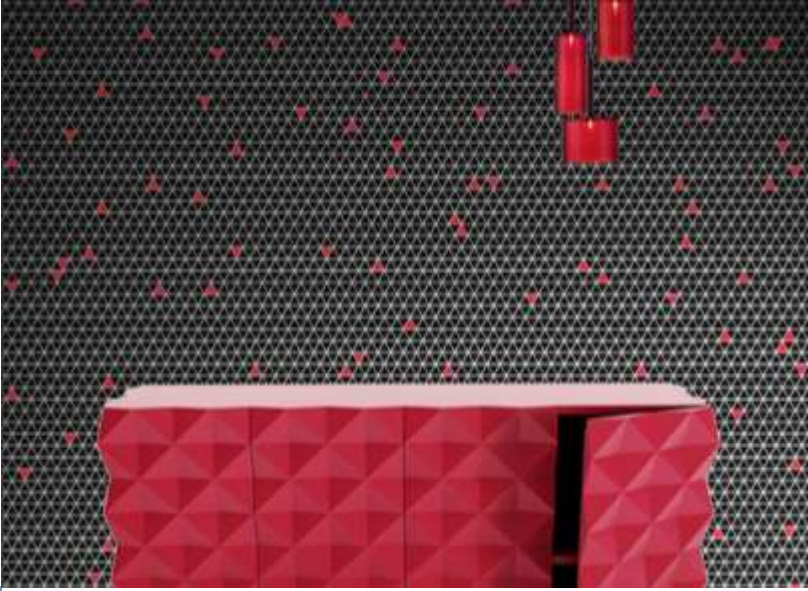


COLECCIONES / COLLECTIONS

SELECCIÓN DE NUESTRAS PRICIPALES COLECCIONES Y MODELOS / ASSORTMENT OF OUR MAIN SERIES AND MODELS

p. 19





ÍNDICE

TABLE OF CONTENTS

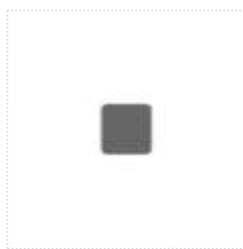


TÉCNICA / TECHNICAL DATA

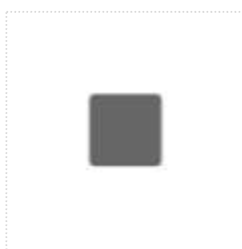
RESUMEN DE CARACTERÍSTICAS TÉCNICAS / TECHNICAL SPECIFICATIONS AND INTERNATIONAL STANDARDS

p. 61

FORMATOS/SIZES



T-8 8X8



T-12 12X12



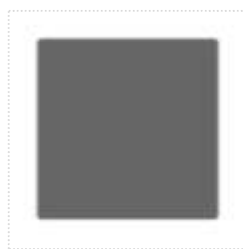
C-15 15X15



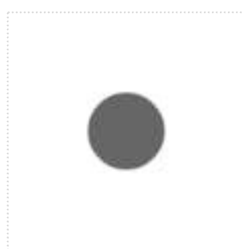
C-2 25X25



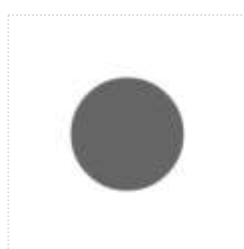
C-4 40X40



C-5 50X50



R-18 DIAM 18



R-23 DIAM 23



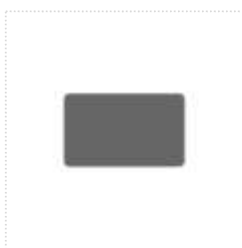
E-2 HEXAGONAL 25



MINILOOP



BLOK 12X38



BLOK 20X40



BLOK 25X50



T-3 TRIANGULAR



PERLA



R-23 & C-2

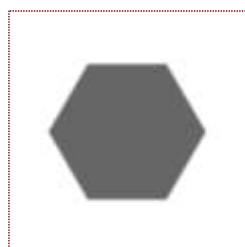


17D + JUNTA BLANCA/WHITE JOINT

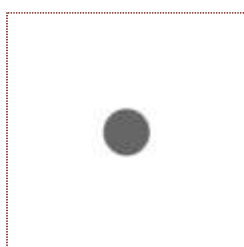


ELITE

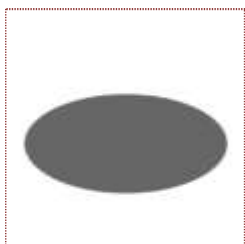
Consultenos la disponibilidad de la gama de colores en los diferentes formatos. / Please, ask for availability of our colour range in different sizes.



E-3 HEXAGONAL 35



R-8 DIAM 8



OVAL



STAR

NUEVOS FORMATOS/NEW SIZES

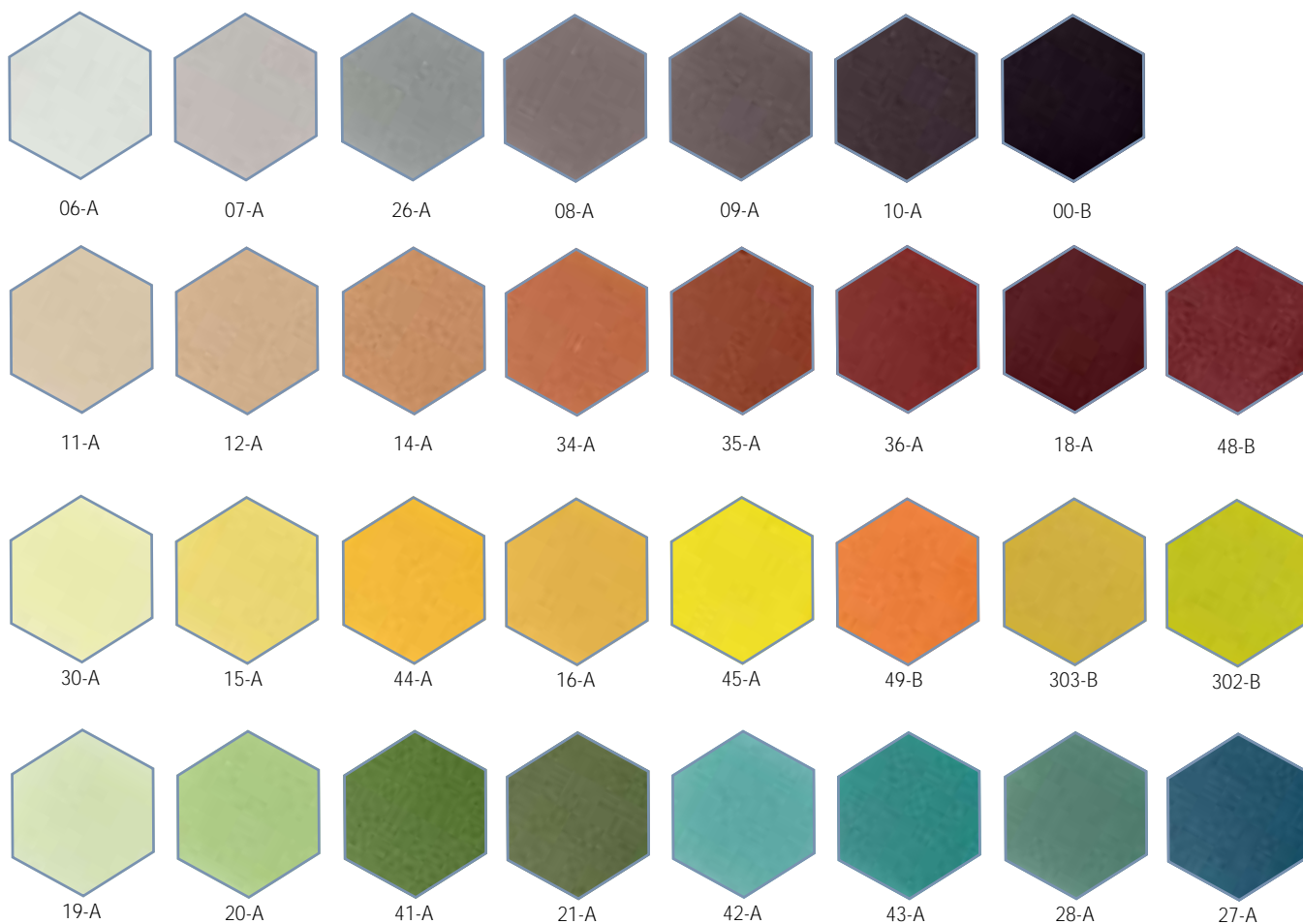
PACKING LIST

	DIMENSIONES PLACA/SHEET DIMENSIONS	PLACAS POR M2/SHEETS SQM
25X25	334 X 334	9
40X40	320 X 320	10
R-23	334 X 344	9
HEX E-2	334 X 344	9
12X12	320 X 320	10
20X20 / BUBBLE	320 X 320	10
15X15	320 X 320	10
50X50	320 X 320	10
8X8	315 X 315	10
PERLA	300 X 300	11
BLOK 20X40	300 X 300	11
BLOK 25X50	315 X 300	11
BLOK 12X38	320 X 320	10
MINILOOP	300 X 300	11
TRIANGULAR	320 X 300	11
ELITE	315 X 315	10
HEX E-3	315 X 315	10
R-8	315 X 315	10
STAR	320 X 320	10
OVAL	325 X 348	10

El packing list puede ser modificado por necesidades de producción.

Packing list could be modified due to production requirements.

LISOS/PLAIN



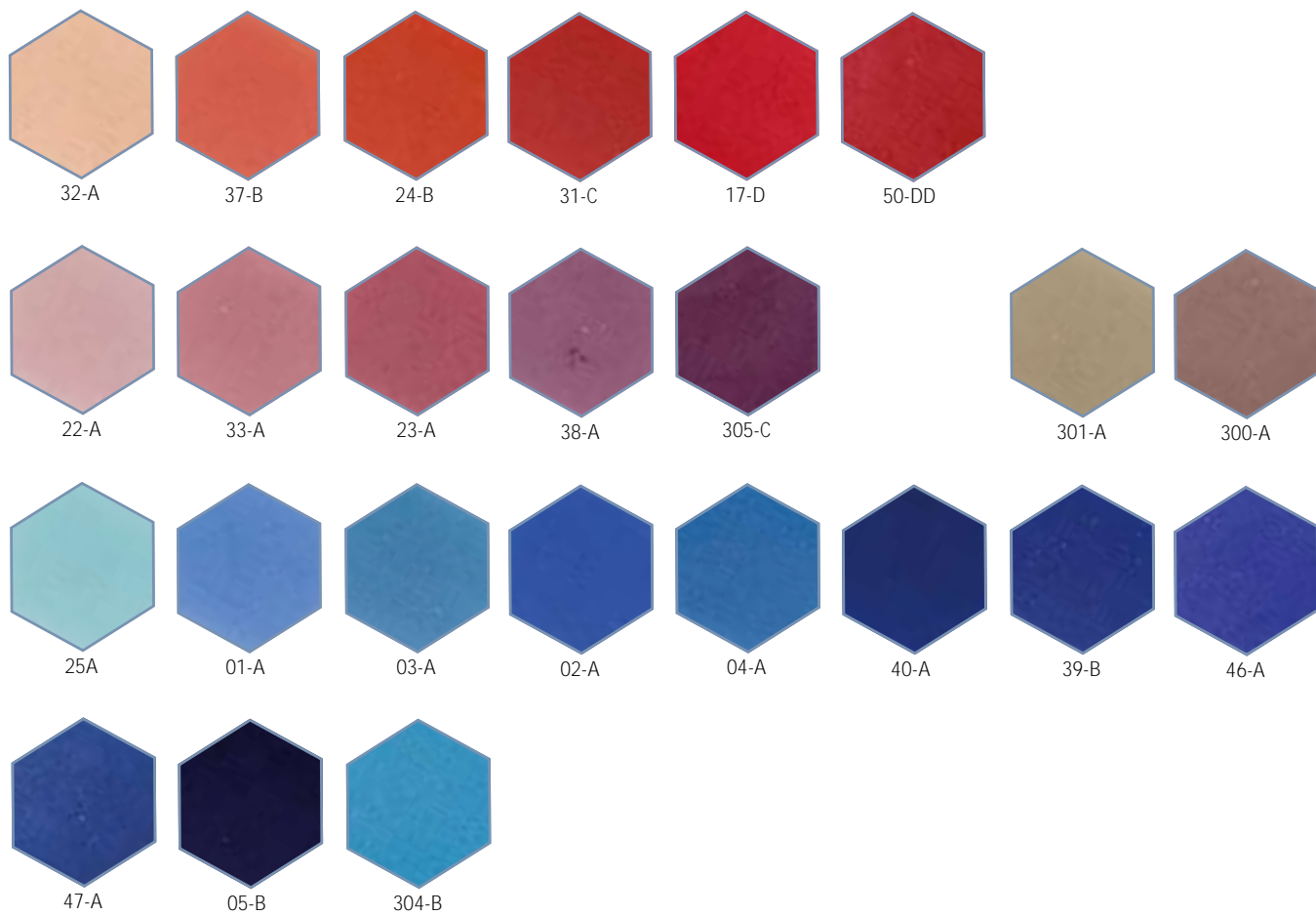
Al tratarse de reproducciones fotográficas, los colores de este catálogo pueden variar ligeramente.

Real colours of this catalogue may slightly change, since they are photographic reproductions.



17-D

06-A



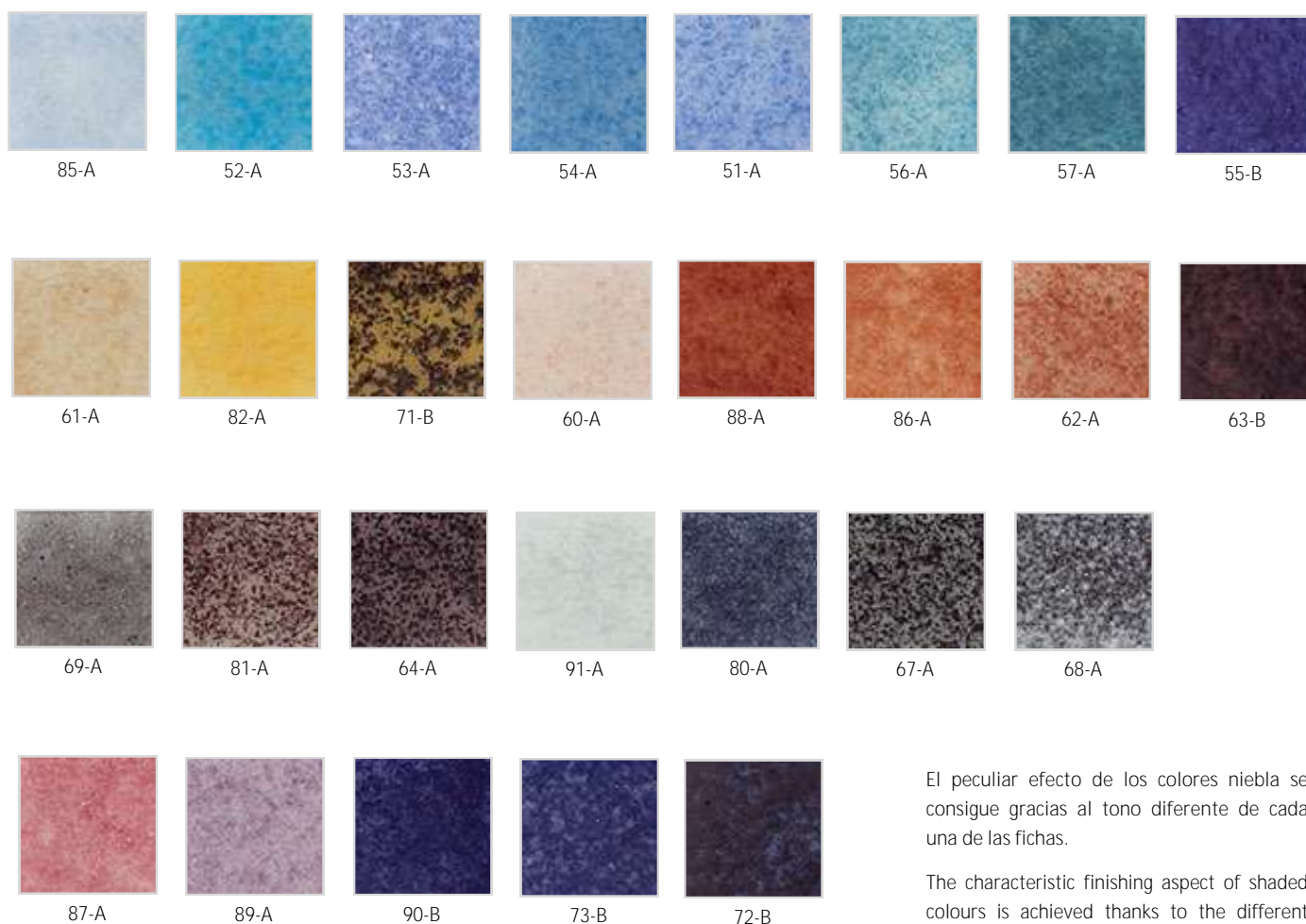
Consulte los formatos disponibles en la pag.6. y en www.vitrogres.info.

Consult available sizes in page 6 and at www.vitrogres.info.

NIEBLAS/SHADED



C-270-B



El peculiar efecto de los colores niebla se consigue gracias al tono diferente de cada una de las fichas.

The characteristic finishing aspect of shaded colours is achieved thanks to the different shades of each tiles

Consulte los formatos disponibles en la pag.6. y en www.vitrogres.info.

Consult available sizes in page 6 and at www.vitrogres.info.



MEXCLA PERSONALIZADA/CUSTOMIZED MIX



VIVALDI-TZ



83-A



58-A



92-A



59-B



65-B



75-C



70-B



353-B

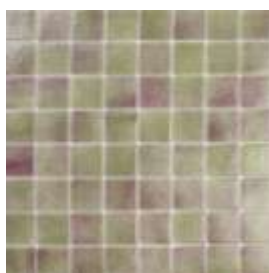


352-A

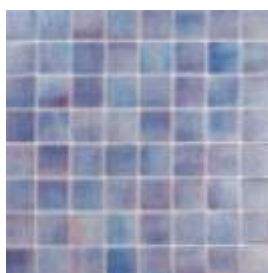


351-A

BRUMAS/MIST



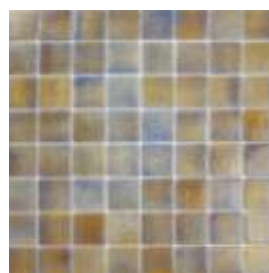
500-B



501-B



502-B

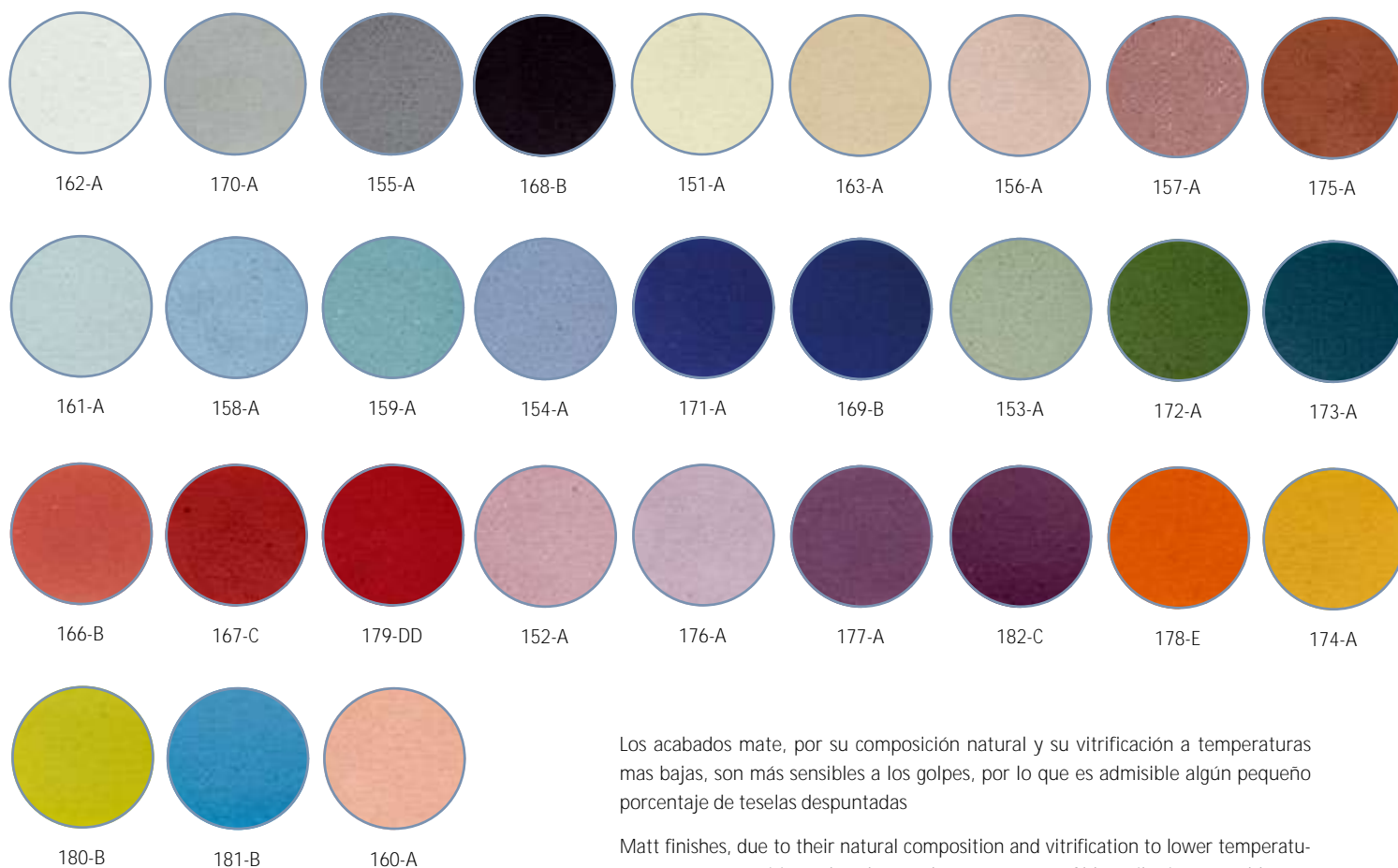


503-B

MATES/MATT



E-2162-A

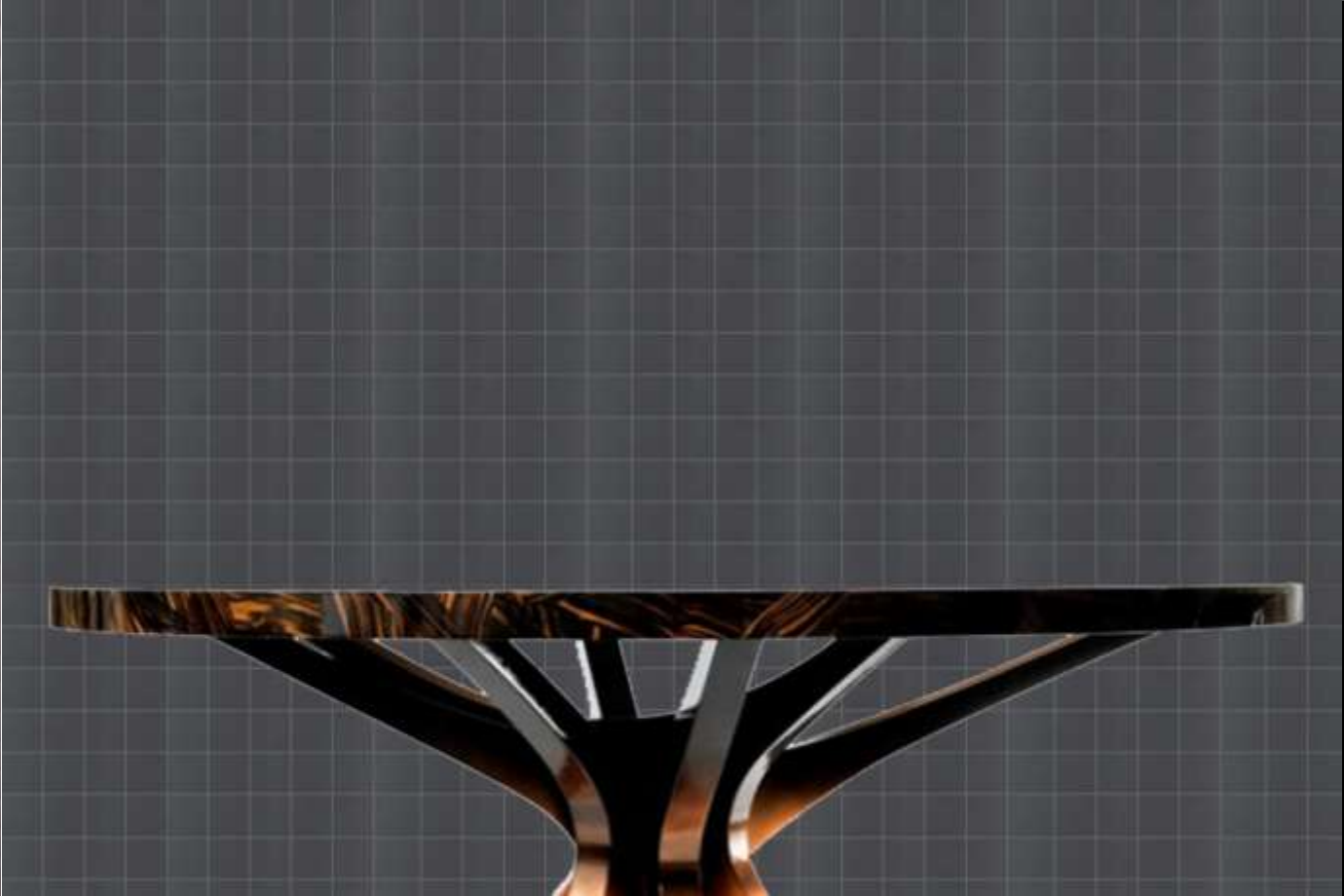


Los acabados mate, por su composición natural y su vitrificación a temperaturas más bajas, son más sensibles a los golpes, por lo que es admisible algún pequeño porcentaje de teselas despuntadas

Matt finishes, due to their natural composition and vitrification to lower temperatures, are more sensitive to knocks, so a low percentage of blunt tiles is acceptable.

Consulte los formatos disponibles en la pag.6. y en www.vitrogres.info.

Consult available sizes in page 6 and at www.vitrogres.info.



OPAK

C-5604-OB



604-OB



602-OA



608-OA



601-OA



603-OA



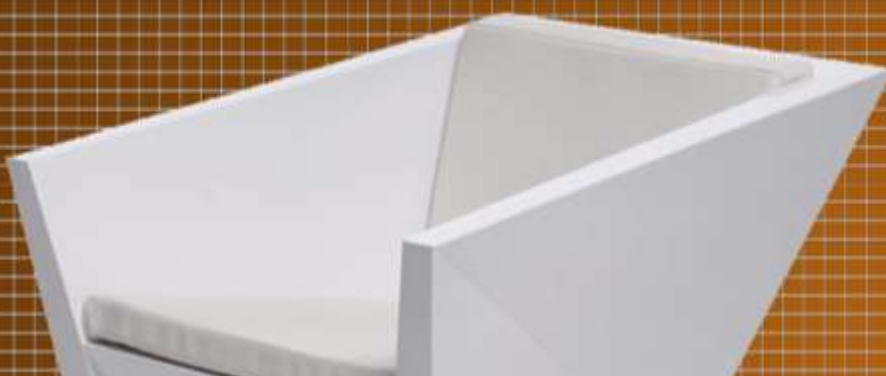
605-OA



607-OB



606-OA



C-2311-B TOFFE

LISOS/PLAIN



309-B
CHOCO



311-B
TOFFE



308-B
BOTELLA/ENGLISH GREEN

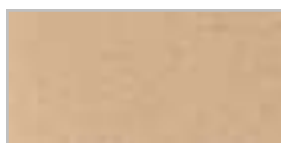


310-B
MUSGO/MOSS GREEN

MATES/MATT



183-A



184-A



185-A



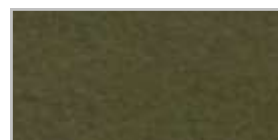
186-B
CHOCO



189-B
TOFFE



190-B
BOTELLA/ENGLISH GREEN



192-B
MUSGO/MOSS GREEN

Consulte los formatos disponibles en la pag.6. y en www.vitrogres.info.

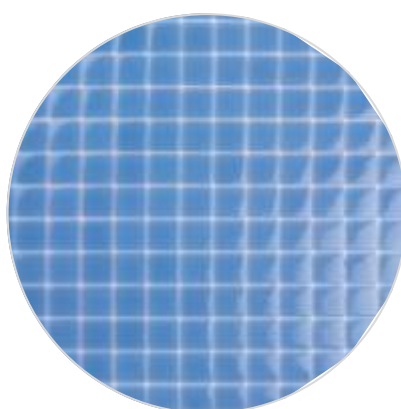
Consult available sizes in page 6 and at www.vitrogres.info.



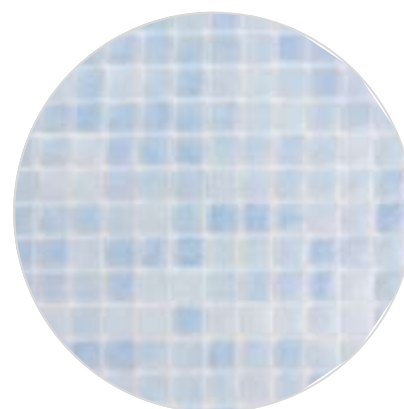
SELECCION/SELECTION



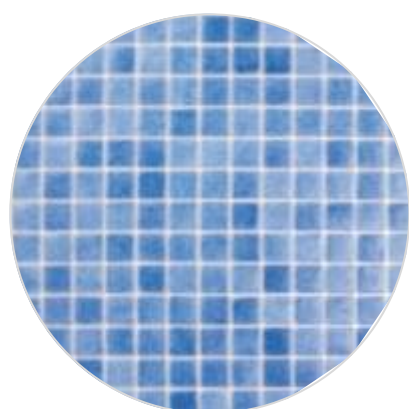
CA-206-A



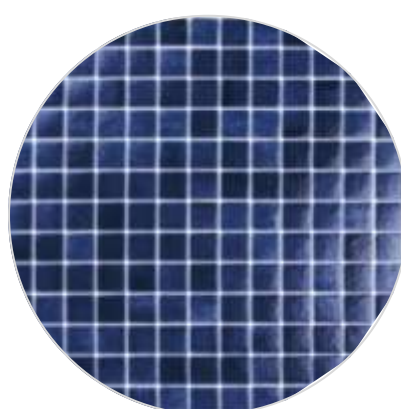
CA-201-A



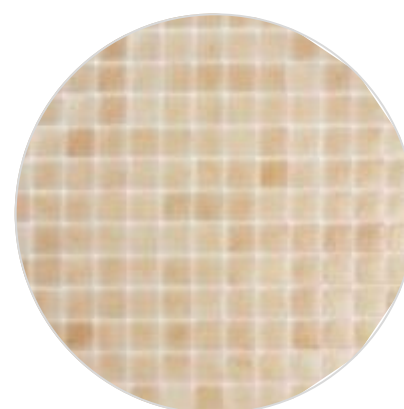
CA-285-A



CA-251-A



CA-255-B



CA-261-A

Esta es una selección más habitual de los colores y formatos en antideslizante técnico.

This is the mostly used assortment of colours and sizes in technical anti-slip finish.

LUXURY



DAMASCO-LF



AMATISTA-LB



RUBI-LB



JADE-LB



PIRITA-LB



ZAFIRO-LB



DIAMANTE-LA



OPALO-LB



TANGER-GH

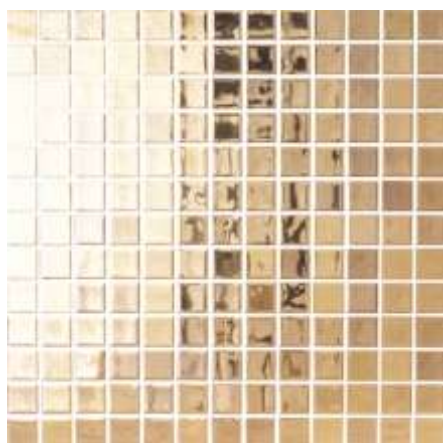


TITANIUM

C-2 AURUM



ARGENTUM



AURUM



BRUNDUSI



C-2 AURUM

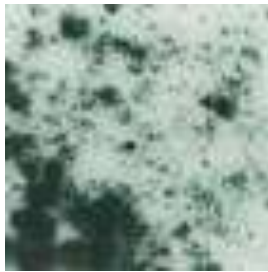
JASPES/SPECKLED



C-4126-B



100-A



103-A



104-A



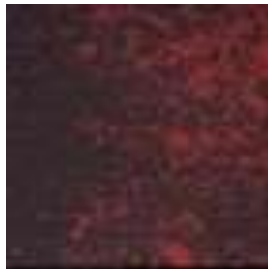
105-A



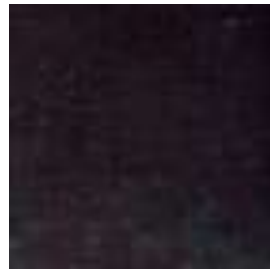
106-A



126-B



127-B



129-B



130-B



131-B



132-B



133-B



134-A



135-A

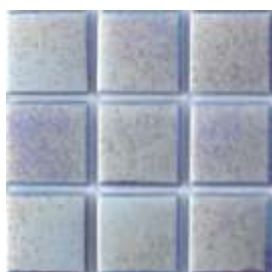


136-A



GLACIAR

UPSALA-GA



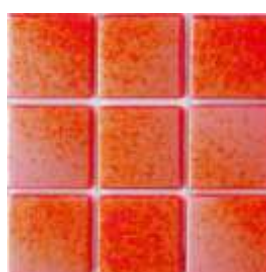
MORENO-GB



UPSALA-GA



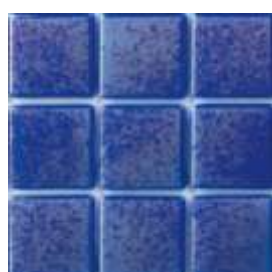
MARIAL-GB



MALASPINA-GD



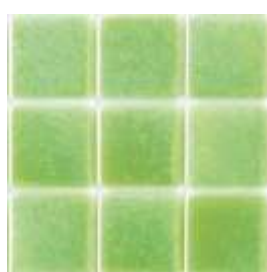
HUBBARD-GB



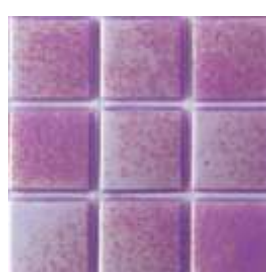
VIEDMA-GB



MUIR-GA



SILVRETTA-GB



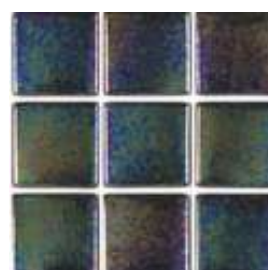
ANTIZANA-GB



LOGAN-GB



VATNA-GA



TASMAN-GC

Consulte los formatos disponibles en la pag.6. y en www.vitrogres.info. Consult available sizes in page 6 and at www.vitrogres.info.

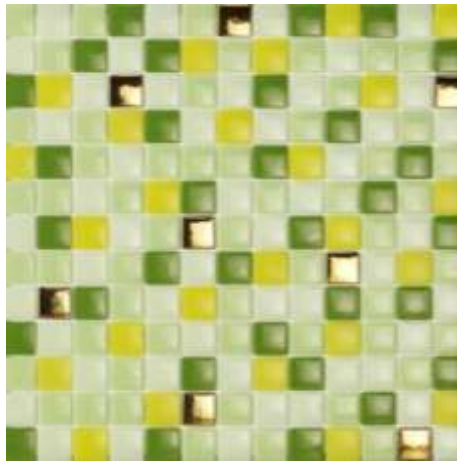
TITANIUM MIXTURES



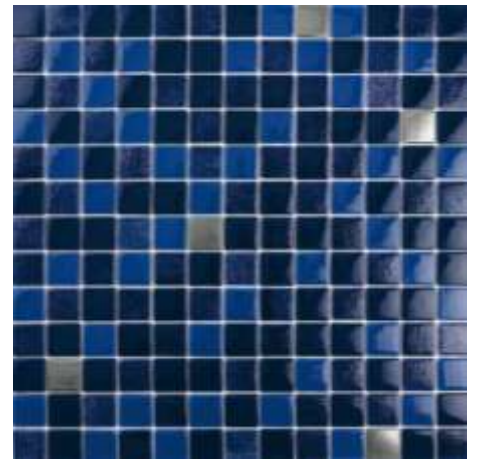
ALBARN-TT



ROSSINI-TZ



LOPE-TZ



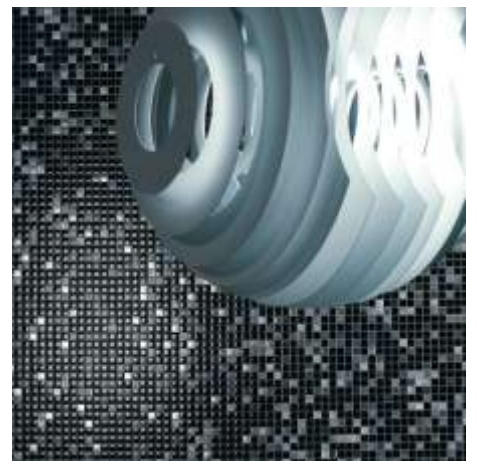
ALBINONI-TZ



SINATRA-TZ



VERDI-TZ

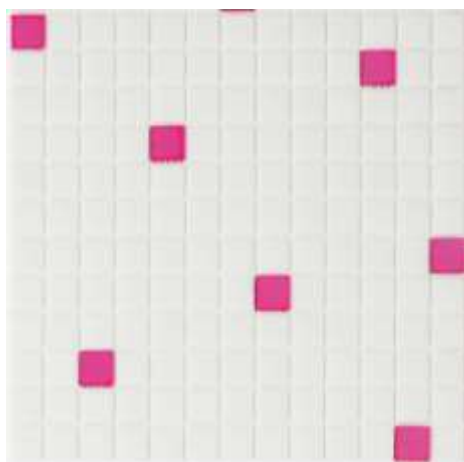


BELLINI-TZ



LUXURY by Tomas Alía

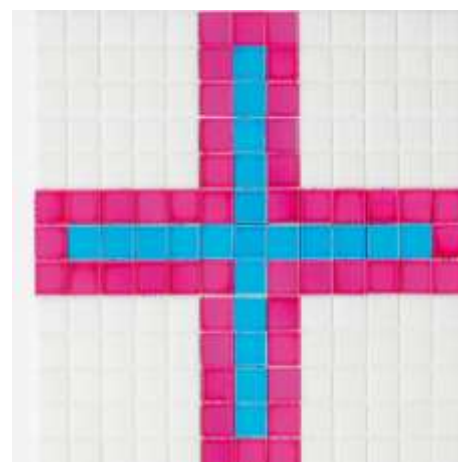
FEZ-LF



FEZ-LF



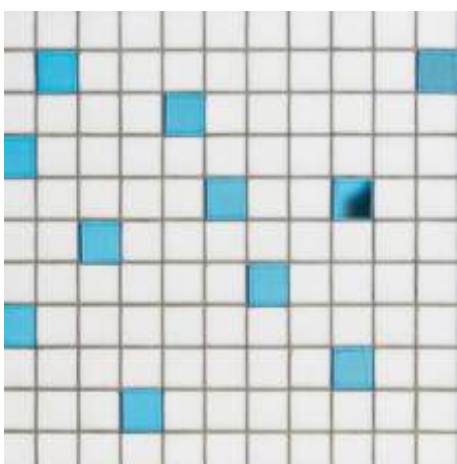
AGADIR-GH



TANGER-GH



AMATISTA-LB



BUKHARA-LF



MARRAKECH-GH

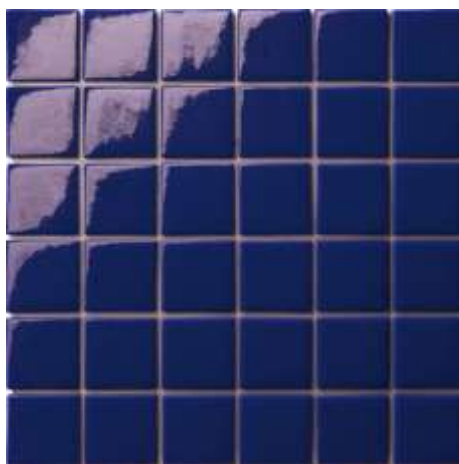
DEKA



C-507-A



C-549-B



C-505-B



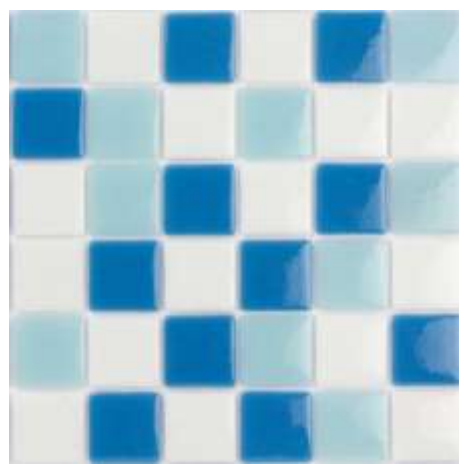
C-512-A



C-508-A



C-401-A



C-5 ELBA-F



GLACIAR

E-2 MORENO-GB



MUIR-GA



MALASPINA-GD



FERRY-GF

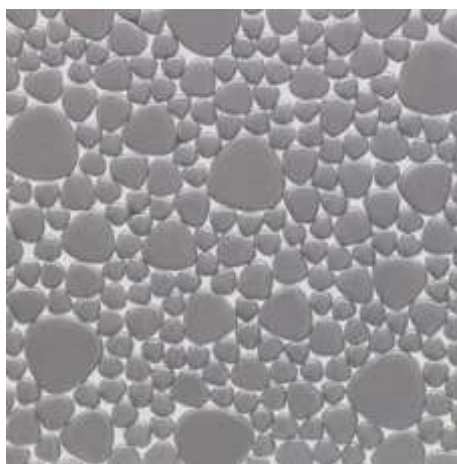
ELITE



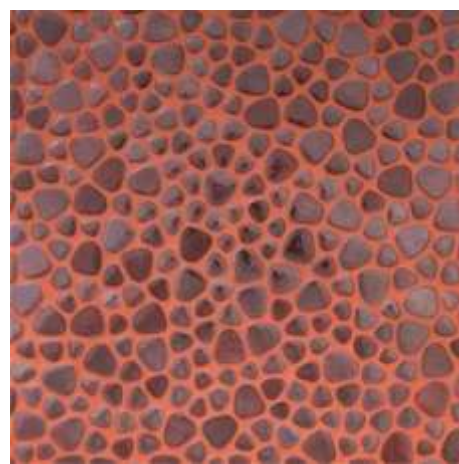
VALENTINO-EB



STEFANO-EC



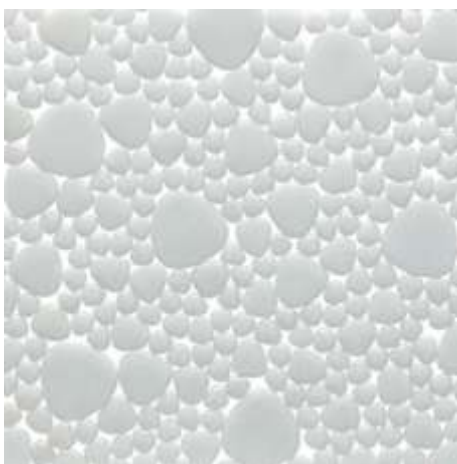
ANDREA-EA



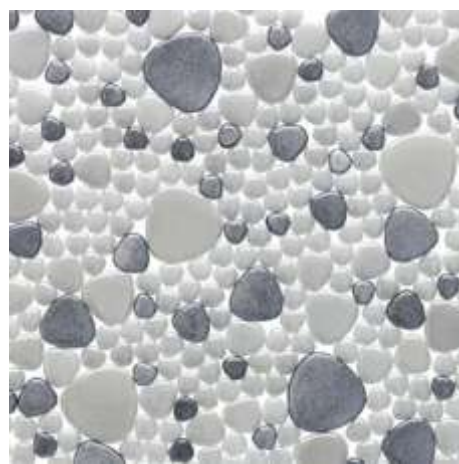
MICHELE-EB



MODESTO-EA



VITTORIO-EA



LOUIS-EB

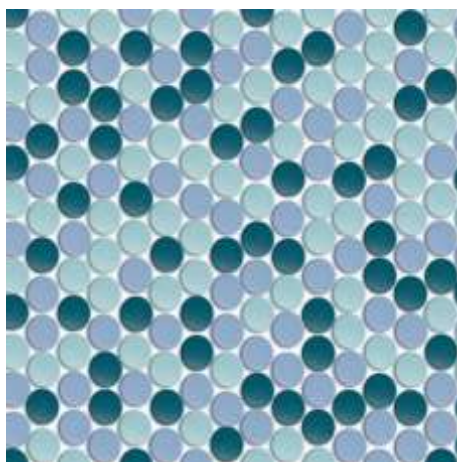


DOTS

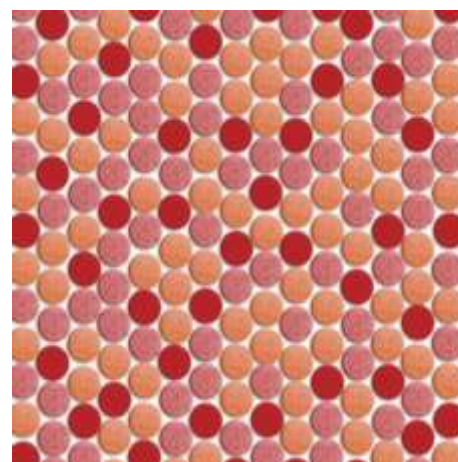
FIRENZE-GF



URAL-F



BARRON-G



GAMBIA-I



MUIR-GA



PANARO-G

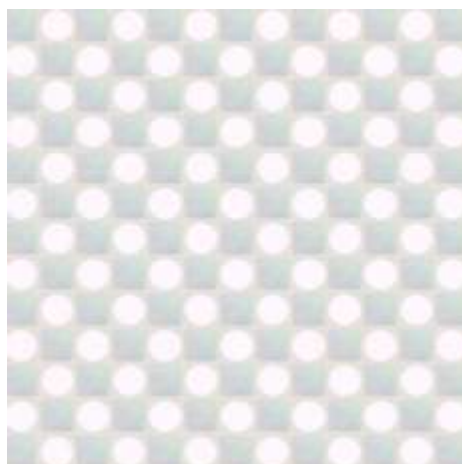


TIBER-G

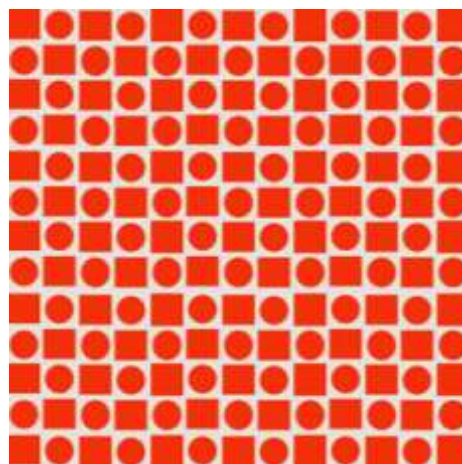
ABSTRAKT



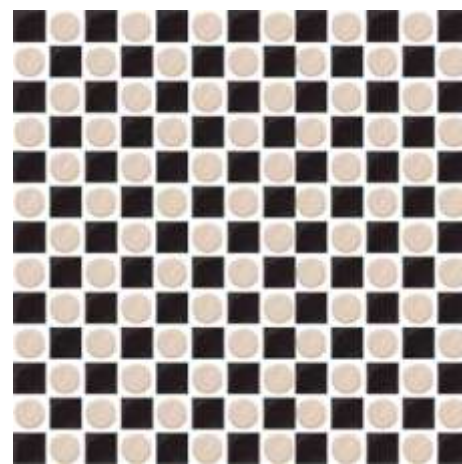
ANGLET



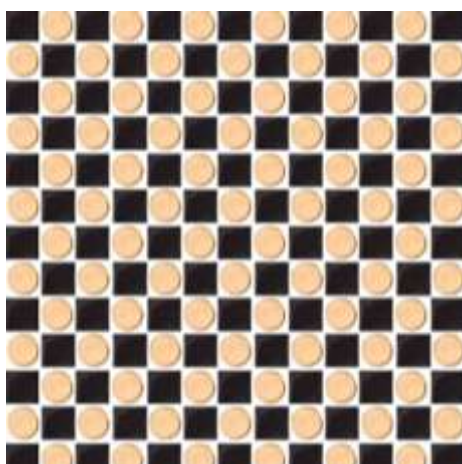
BAYONA



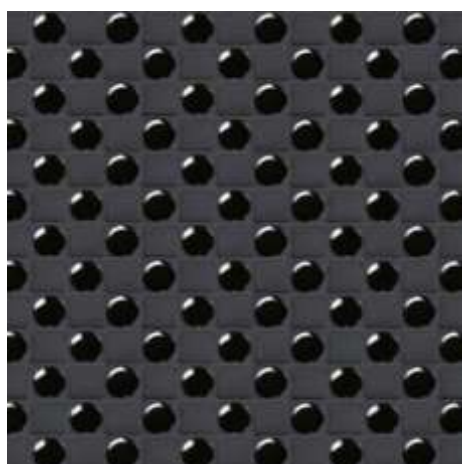
ANGLET



ZUBEROA



DONIBANE



HENDAYA

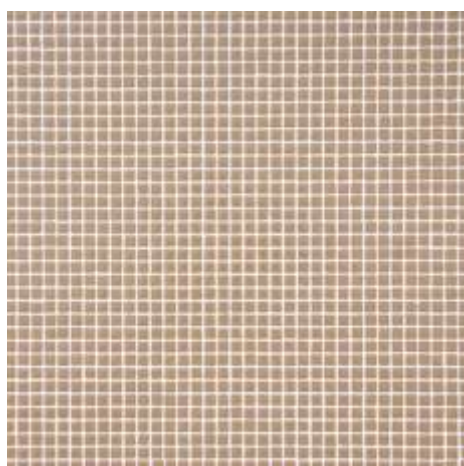


BAYONA

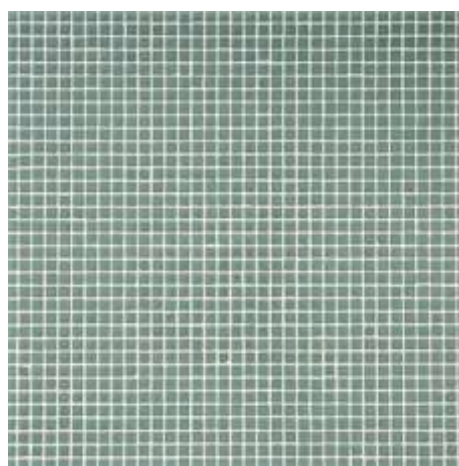


MIKRA

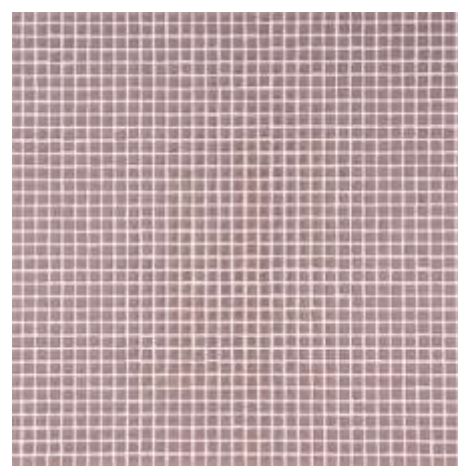
T-850-DD



T-8301-A



T-842-A



T-8157-A



T-844-A



MURALES MIKRA / MIKRA MURALS

HEXAGONAL E-2



OGLIO-F



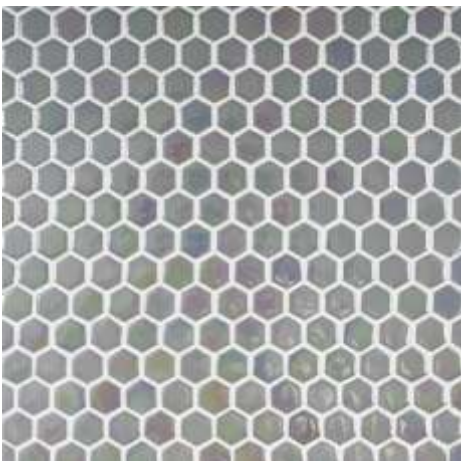
TESINO-F



CONCA-G



TEMO-F



MORENO-GB



ONTARIO-F



161-A



BIG HEXAGONAL E-3

E-300-B



E-3186-B



E-3162-A



MODULAR E-3

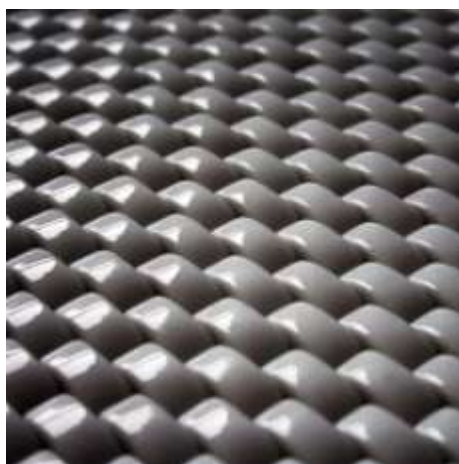
MINILOOP



20-A



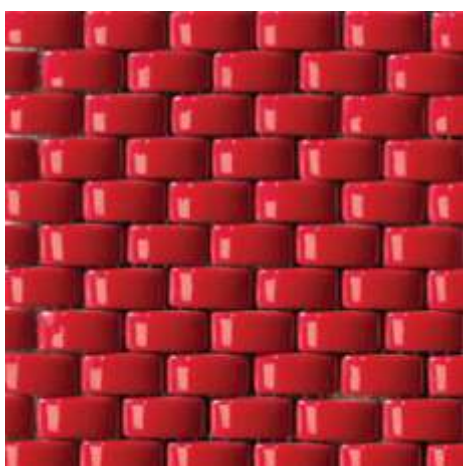
06-A



08-A



MEZCLA/MIX ZABALA



17-D



304-B



BLOK

20X40 17D



20X40 25A



20X40 01-A



BLOK SLIM 12X38 06A



25X50 MIX

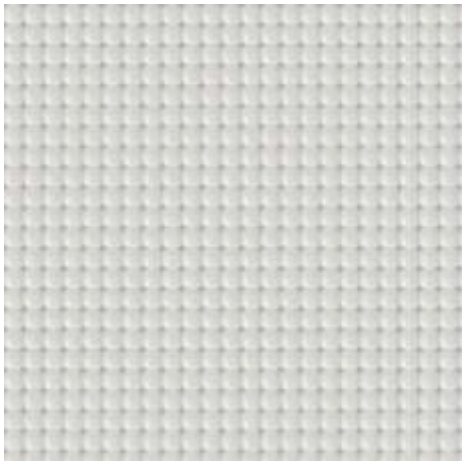




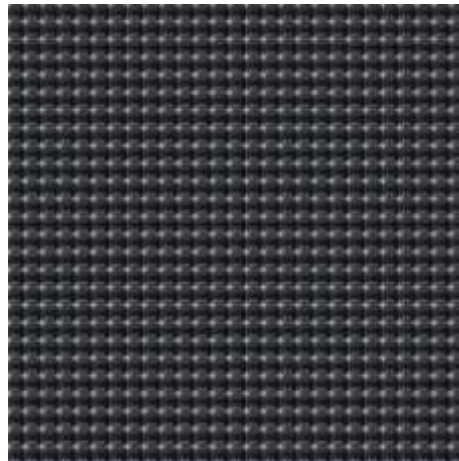
PERLA



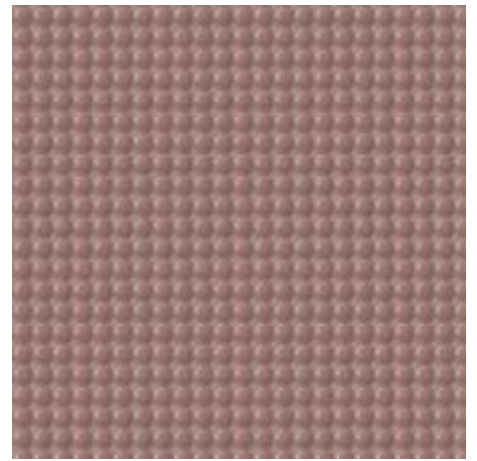
PERLA BLANCA



PERLA BLANCA



PERLA NEGRA



PERLA ROSA



PERLA NEGRA



BUBBLE

302-B



MIX 06A/UPSALA-GA



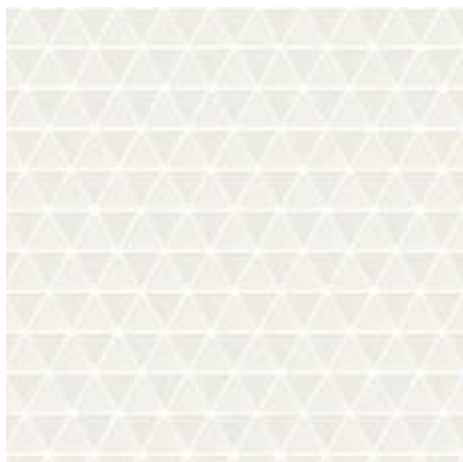
04-A



MIX 06A/UPSALA-GA



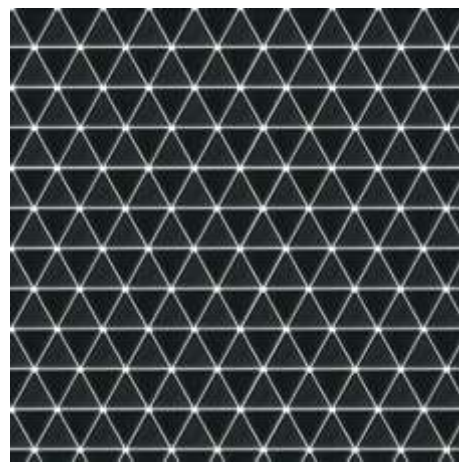
06A + JUNTA BLANCA/WHITE GROUTING



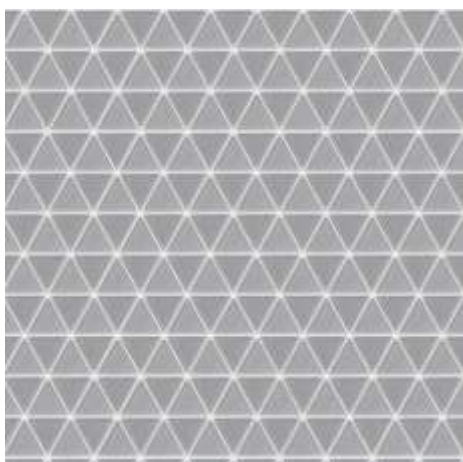
06A + JUNTA BLANCA/WHITE JOINT



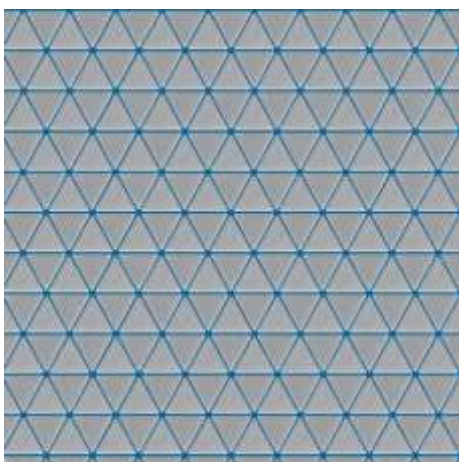
00B + JUNTA NEGRA/BLACK JOINT



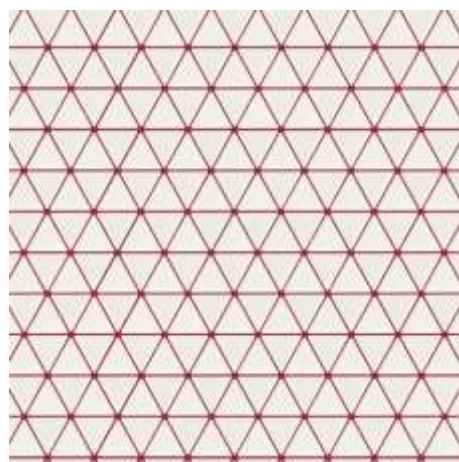
00B + JUNTA BLANCA/WHITE JOINT



09A + JUNTA BLANCA/WHITE JOINT



09A + JUNTA AZUL/BLE JOINT



06A + JUNTA ROJA/RED JOINT

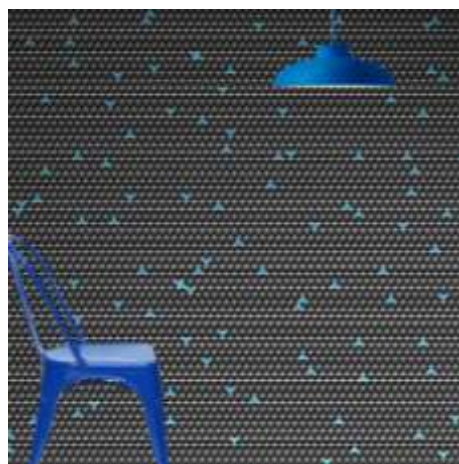


ARROWS

WHITE



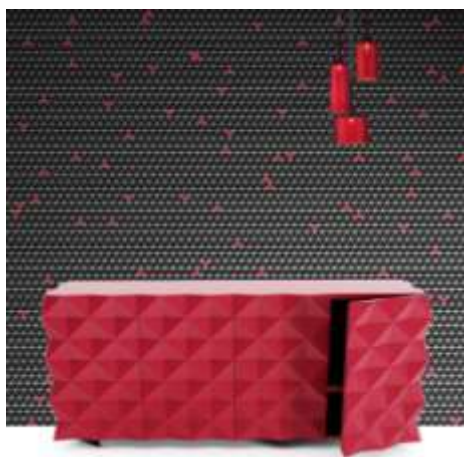
GREEN



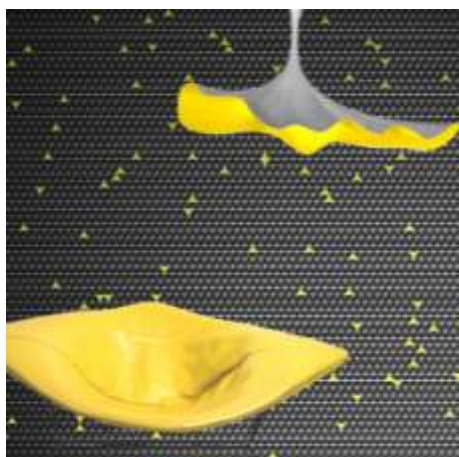
BLUE



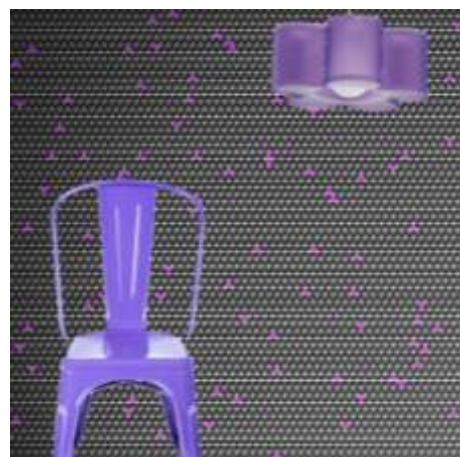
ORANGE



RED



YELLOW



PURPLE

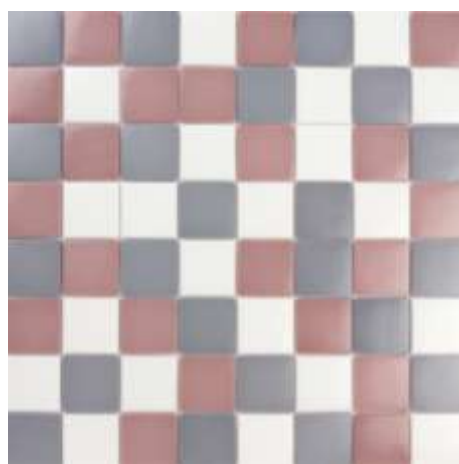
MATES/MATT MIXTURE



AZUER-H



ALCUDIA-H



ESLA-H



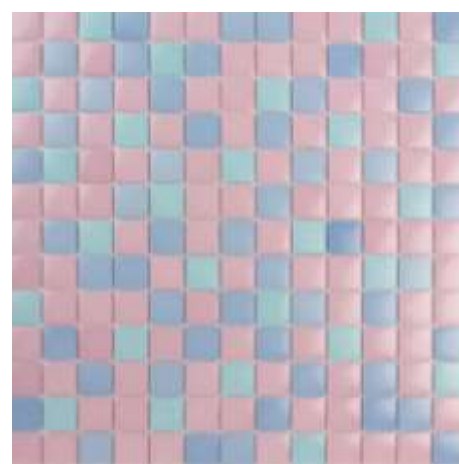
GUADALIMAR-I



CAUCA-H



ODER-H



DON-H

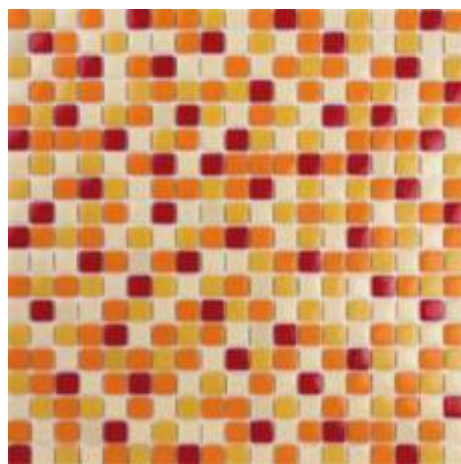


OPUS MIXTURE

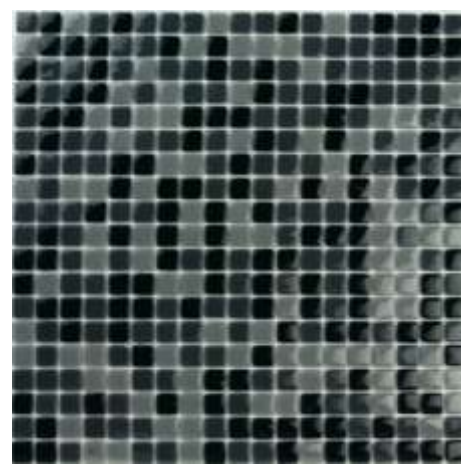
TRIESTE-L



FLORENCIA-J



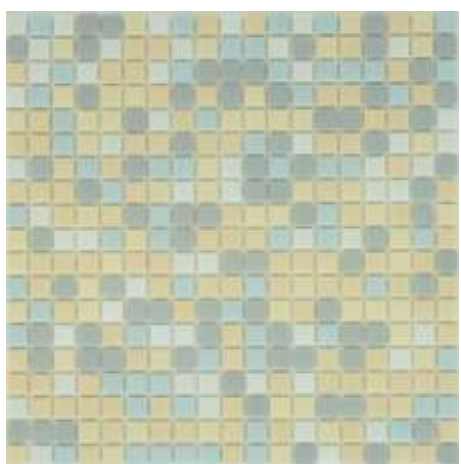
MODENA-K



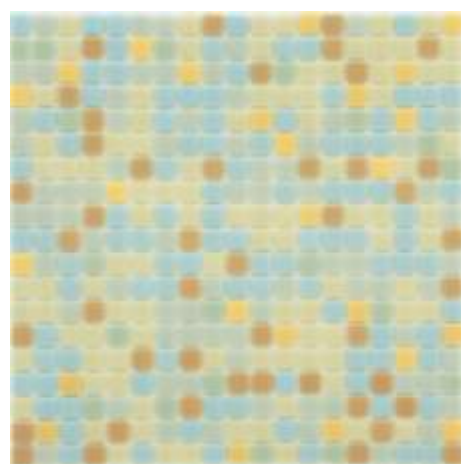
PALERMO-J



RAVENA-J

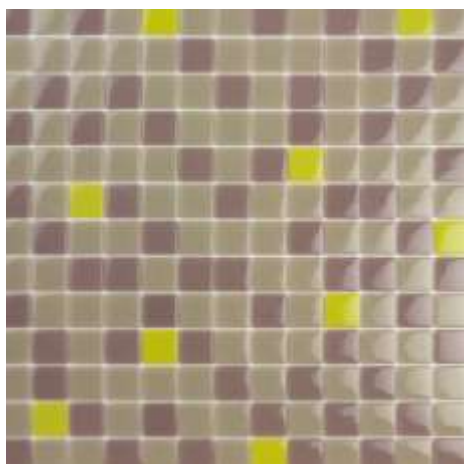


PISA-K

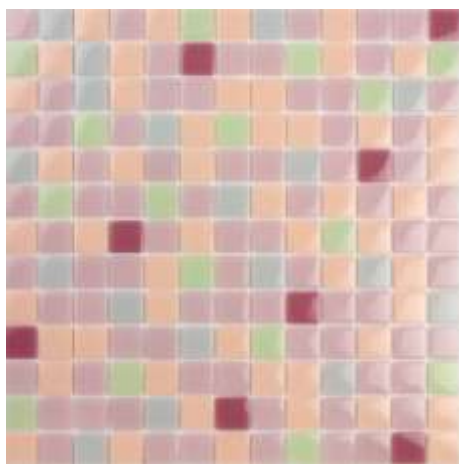


VENEZIA-J

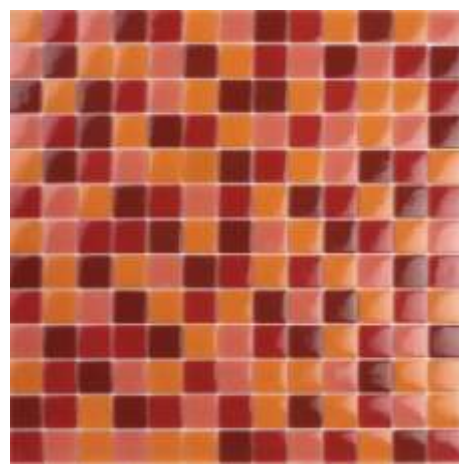
LISOS/PLAIN MIXTURE



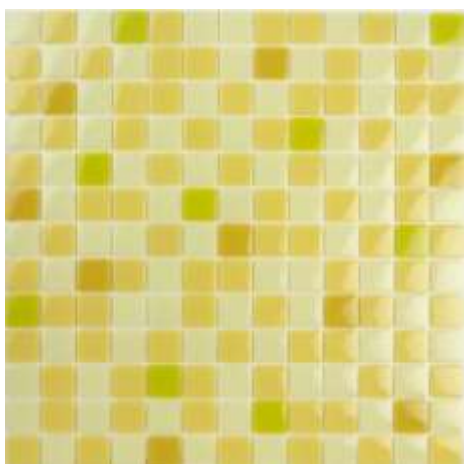
YENISEI-G



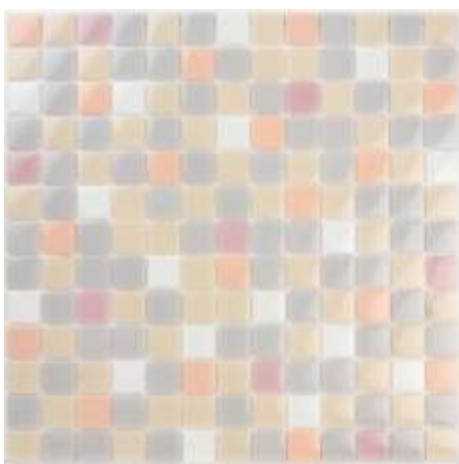
KASAI-F



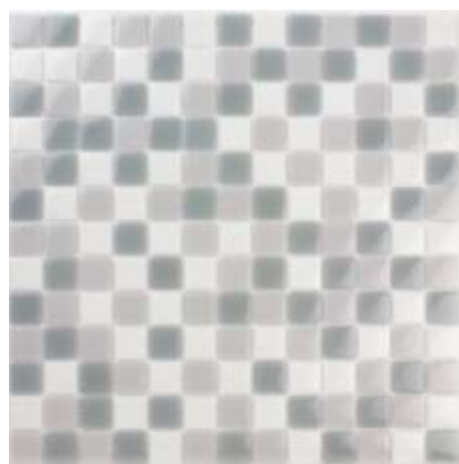
MOSA-I



CUBANGO-H



PO-F



GENIL-F



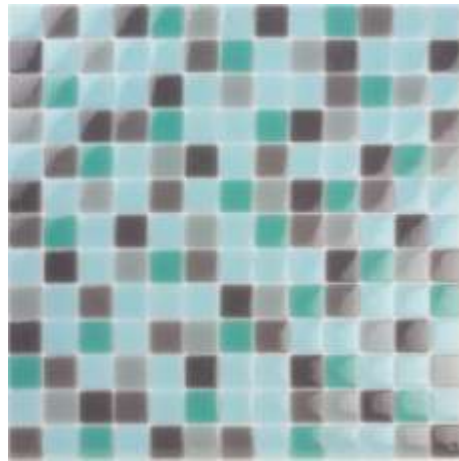
SEGRE-F



GUADALQUIVIR-F



SENA-F



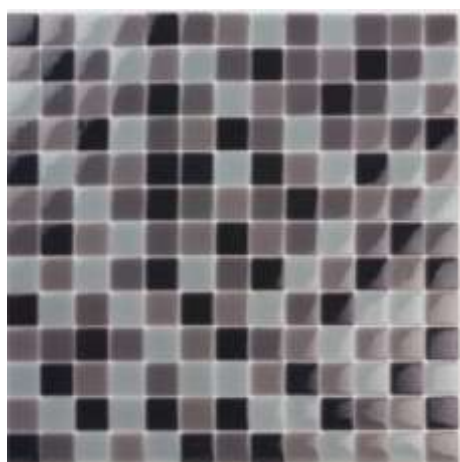
PISUERGA-F



LLOBREGAT-G



JILOCA-F



SALOR-F

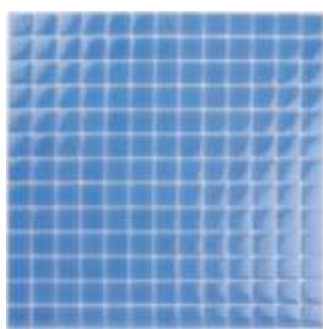


ALMONTE-G

AQUA



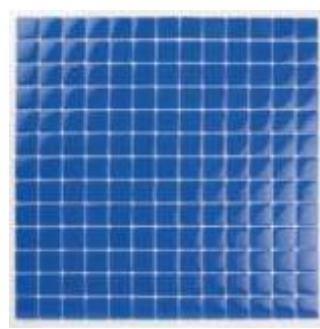
06-A



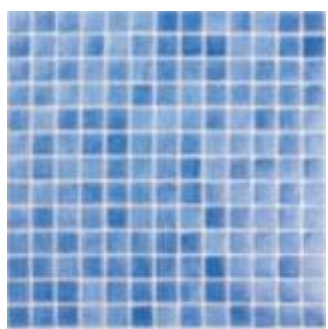
01-A



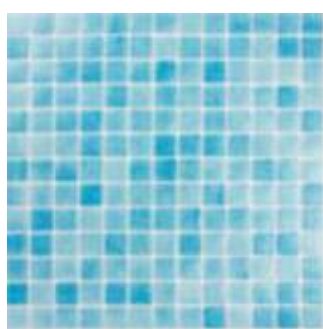
25-A



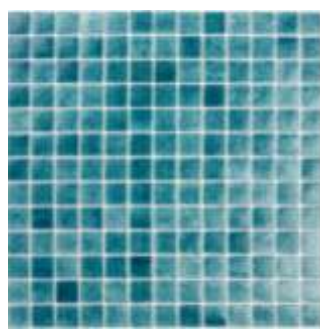
02-A



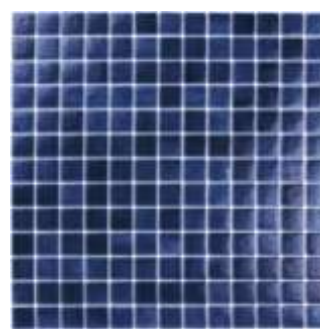
51-A



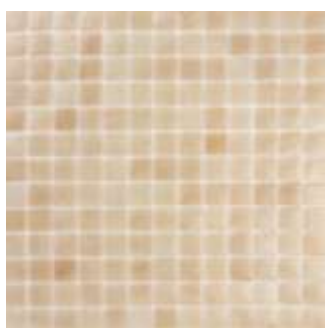
52-A



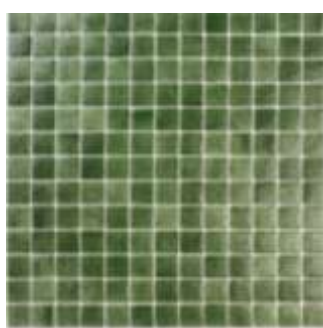
57-A



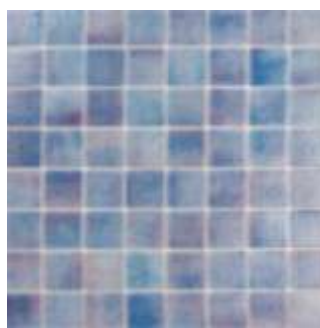
55-B



61-A



58-A



501-B



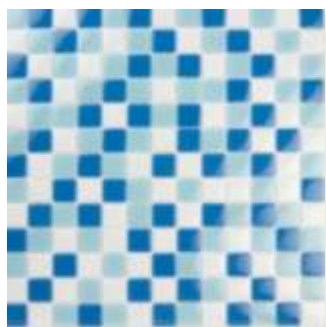
502-B



LOPE-TZ



01-A



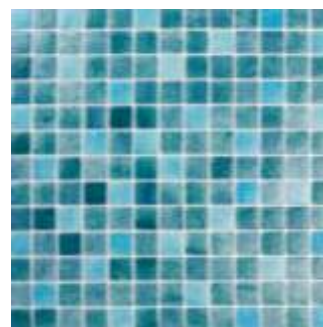
ELBA-G



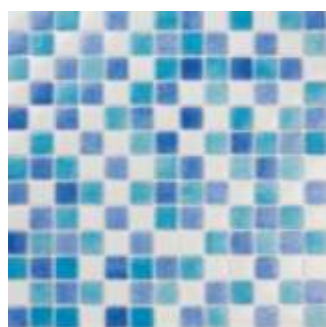
LOIRA-H



NELSON-G



MISSISSIPPI-G



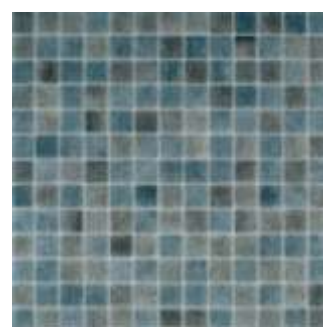
TAMESIS-G



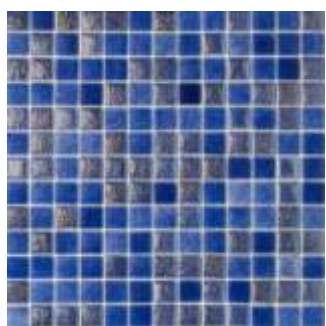
ZADORRA-G



DANUBIO-F



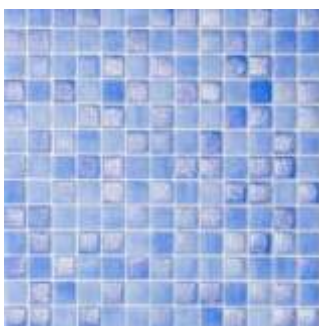
NERVION-F



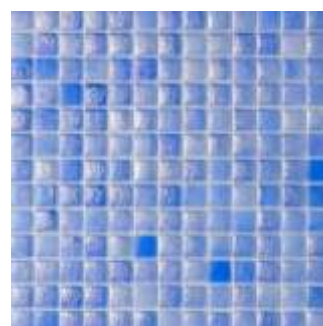
KOLKA-GN



LOGAN-GB

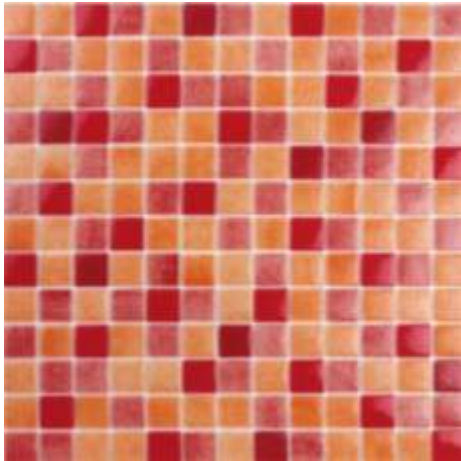


USHUAIA-GM

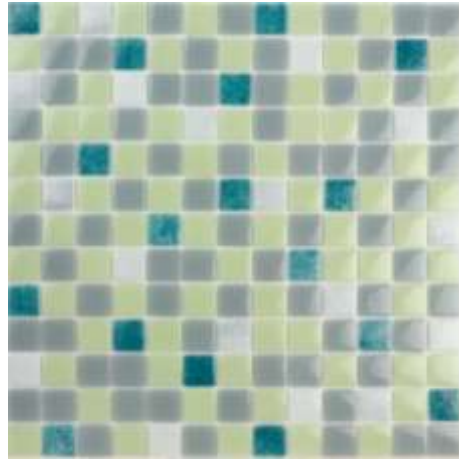


VATNA-GA

NIEBLAS/SHADED MIXTURE



JAMAPA-I



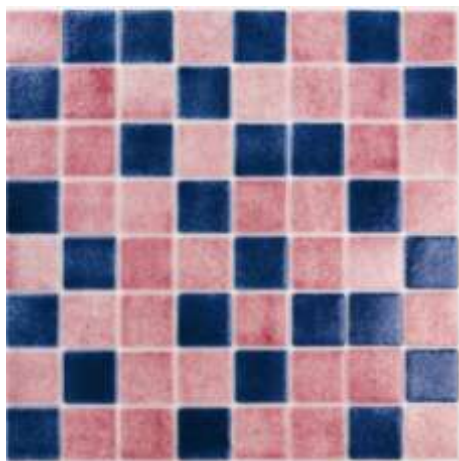
URUBAMPA-F



UCAYALI-H



TORMES-G



AROUSA-H



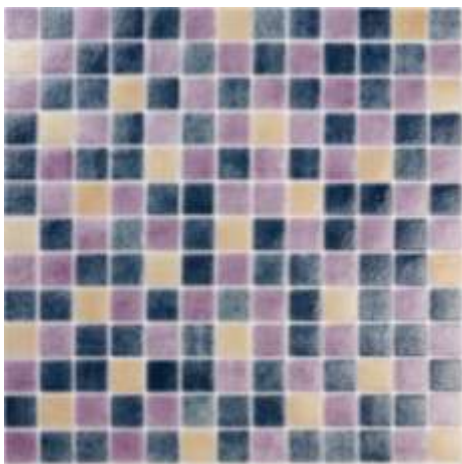
JALON-G



TAJO-G



UBANGUI-F



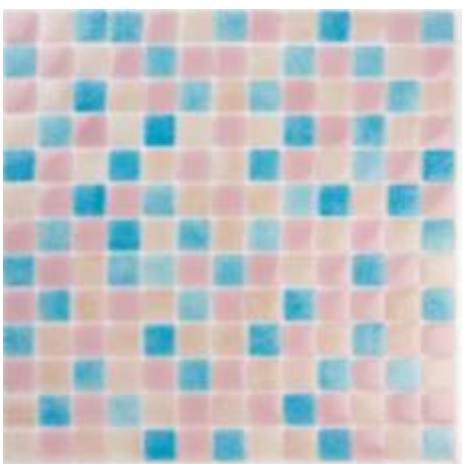
GUADIANA-G



ARAGON-G



UROLA-G



BIDASOA-G



JABALON-G



SIL-G



MINT-GF



BANANA-GN



CURACAO-GF



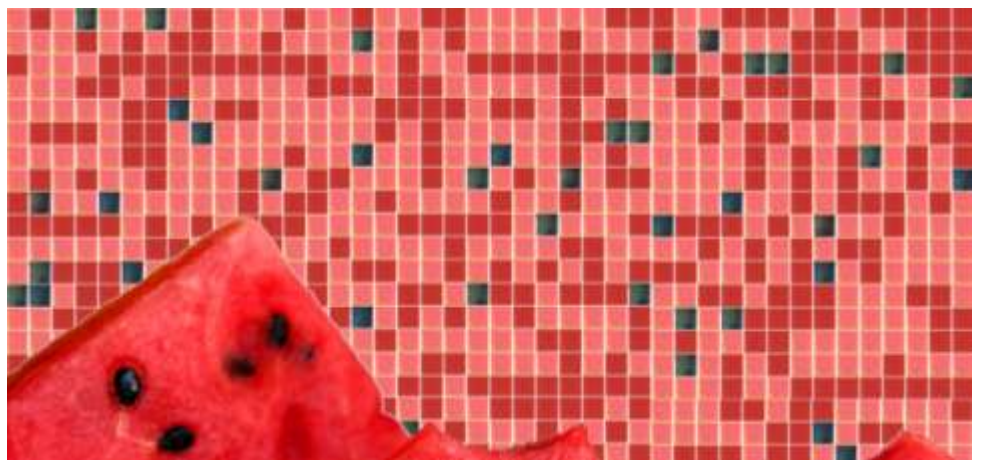
CHERRIES-GN



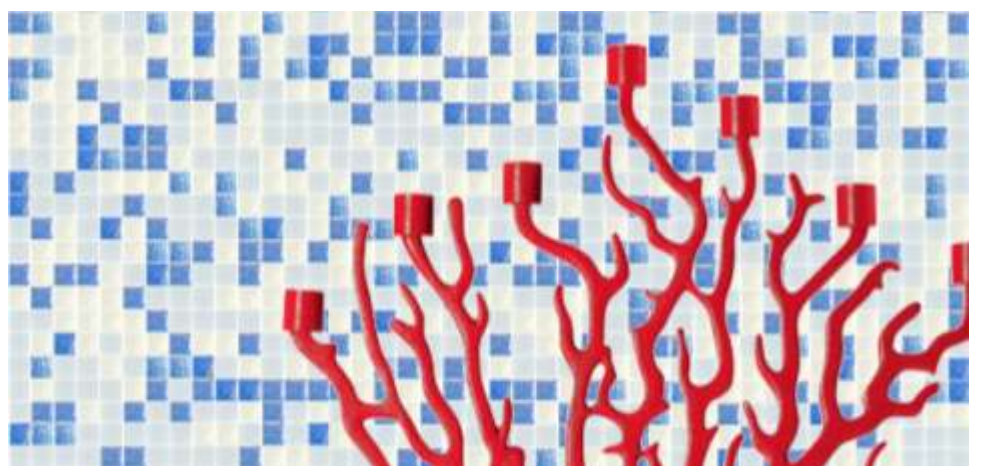
BLUEBERRY-GN



WALNUT-GF

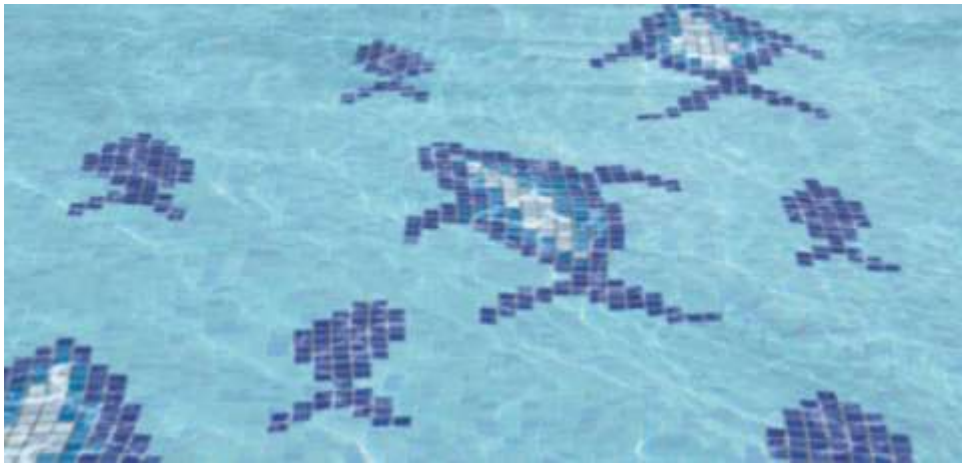


WATERMELON-GH

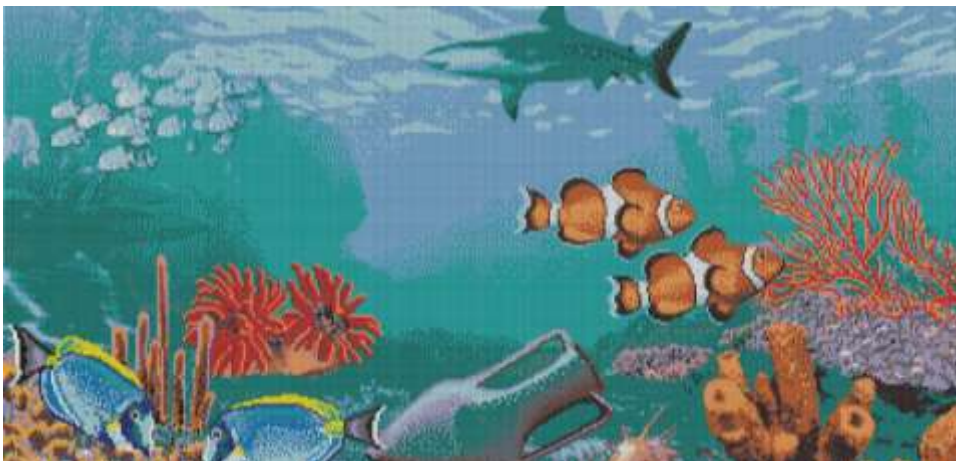


SHERBET-GN

DECORACIÓN AQUA
AQUA DECORATION



PECES/FISH



FONDO DEL MAR/UNDER THE SEA



REMOLINO/WHIRL



SILUETAS/SILHOUETTES PULPO/OCTOPUS



GRANADA



ESTRELLAS MARINAS/SEA STARS

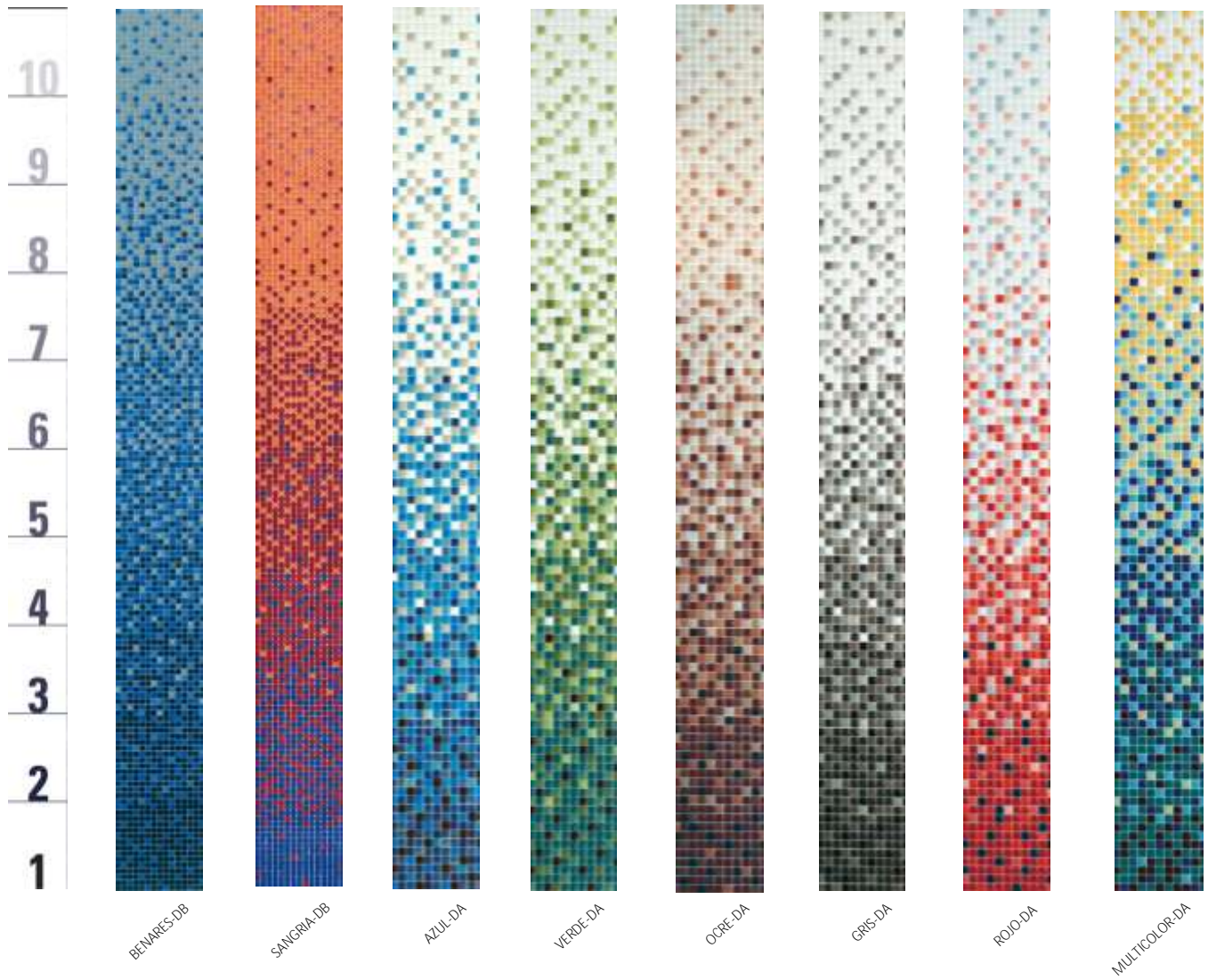


OLA MARINA/SEA WAVE



CENEFAS/BORDERS

DEGRADADOS/GRADATIONS





BOULEVARD-DC



DEGRADADO PERSONALIZADO HEXAGONAL/CUSTOMIZED GRADATION in
HEXAGONAL SIZE



MARGARITA-DB



CAPUCCINO-DC



VALENCIANO-DC



DAQUIRI-DA



WAKIKI-DA



MOJITO-DA



HORCHATA-DA



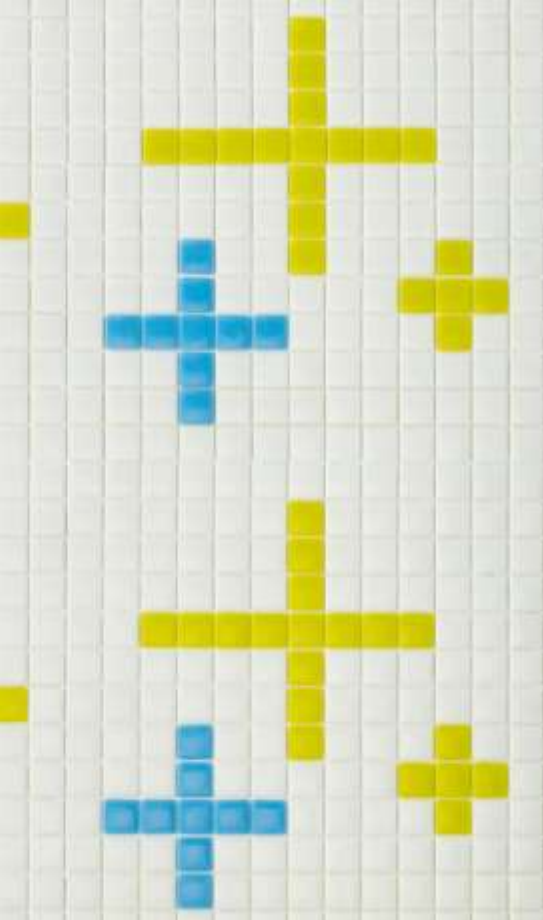
MANHATTAN-DB



MODULARES/ MODULARS



MAYAPAN-MA



OSLO-MA by TOMAS ALIA



MODULAR VINTAGE 40X40



COZUMEL-MB



TIKAL-MA

DECORACIÓN ARTÍSTICA
ARTISTIC DECORATION



CONSULTE TODAS NUESTRAS REALIZACIONES Y POSIBILIDADES EN www.vitrogres.info/CONSULT OUR PROJECTS AND DESIGNS AT www.vitrogres.info



MURALES CON FORMATO MIKRA/MURALS USING SIZE MIKRA



MURALES CON FORMATO MIKRA/MURALS USING SIZE MIKRA



PERSONALIZACION/PERSONALITATION



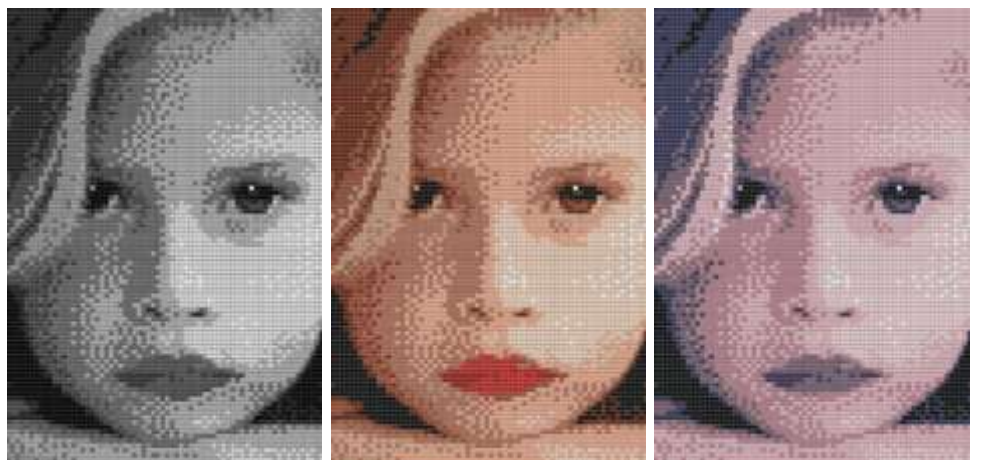
BIG MURALS



COLECCIÓN FLORAL/FLOWER SERIES



MURALES/MURALS



COLECCIÓN PORTARITURE. RETRATOS/PORTRAITURE SERIES. CUSTOM PORTAITS



LOGOS



MURALES/MURALS

GEOMETRIK



OLAIA-MA



SAIOA-MA



IRUNE-MA



ANE-MA



LOREA-MA



MAIDER-MA



JOSUNE-MA



BLACK & WHITE

TRIANGULAR DAMERO/CHESSBOARD



E-2 MODULAR



E-2 MODULAR

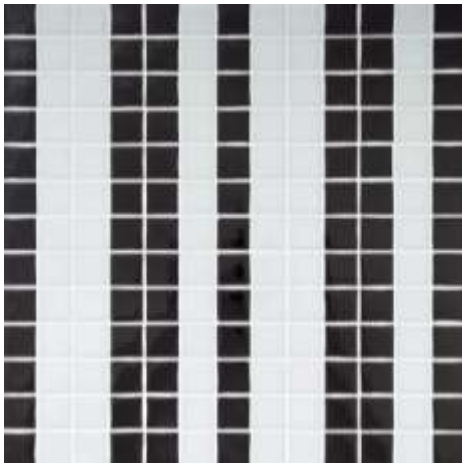


E-2 MODULAR

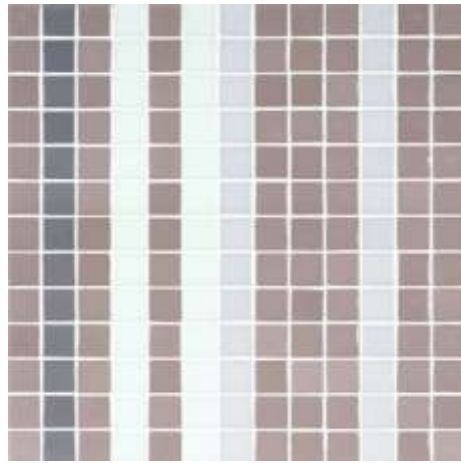
STRIPES



SESIA-MA



TORDINO-MA



FIORA-MA



PIANORO-GF



LANZO-MA



RIPARIA-MA

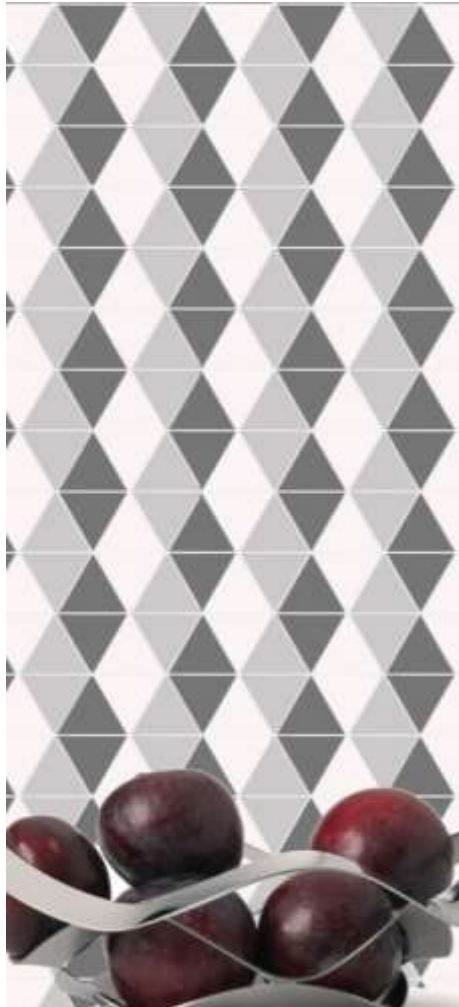
3D COLLECTION



3D MOD 1



3D MOD 2



3D MOD 3



3D MOD 4

VINTAGE



Oporto Series



Modulares/Modulars



Decoraciones personalizadas/custom-designed modular



Logotipos personalizados/custom designed logos



CA-206-A

La seguridad en el pavimento es un factor que adquiere cada vez mayor importancia. La necesidad de evitar resbalones y caídas es imperativa, en especial en los lugares donde el pavimento puede estar mojado (en exteriores, piscinas, etc.) o pueda haber grasas u otros elementos que faciliten el resbalamiento (cocinas industriales)

Safety in flooring is a key factor that is becoming increasingly significant. The need to avoid slips and falls is essential, especially in places where flooring might become wet (outdoor spaces, pools, etc.) or where there might be oil or other elements that might provoke sliding (industrial kitchens).

RESULTADOS Y SELECCIÓN DE MATERIAL VITROGRES SEGÚN EL NIVEL DE ANTIDESLIZAMIENTO REQUERIDO
RESULTS AND SELECTION OF VITROGRES MATERIAL ACCORDING TO THE REQUIRED ANTI-SLIP TREATMENT

	RESULTADOS OBTENIDOS MOSAICO VITROGRES VITROGRES' MOSAIC RESULTS				GRADO DE MANTENIMIENTO DEGREE OF MAINTENANCE
	NORMA UNE-ENV 12633:2003	NORMA ISO/DIS 10545-17	NORMA DIN 51097 STANDARD	NORMA DIN 51130 STANDARD	
TIPO DE ACABADO ANTIDESLIZANTE TYPE OF ANTISLIP FINISH	Péndulo del TRRL TRRL Pendulum	METODO TORTUS TORTUS METHOD	Pie descalzo Barefoot	Pie calzado Wearing shoes	
VITROGRES®	CLASS 2		CLASS B	R11	1
VITROGRES® ANTI-SLIP	CLASS 3	EXCELENT	CLASS C	R12	2



CA-261-A



CA-281-A

www.vitrogres.com

DESCUBRA MAS OPCIONES Y TODO EL MUNDO
VITROGRES EN NUESTRA PAGINA WEB / FIND
MORE POSSIBILITIES AND THE WHOLE VITROGRES
UNIVERSE IN OUR WEBSITE



<https://www.facebook.com/vitrogresmosaic>



<https://twitter.com/vitrogres>



<https://es.pinterest.com/vitrogres/>

Idea, Concept & Design by

vitrodesign

Puede seleccionar alguna de las opciones estándar de este catálogo, consultar más opciones en nuestra página web, o crear su propio diseño o combinación de colores .

You may choose any of the standard options in this catalogue, look for more possibilities in our website, or create your own design or colour combination.

Datos Técnicos / Technical Specifications

CARACTERÍSTICAS DIMENSIONALES / DIMENSIONAL CHARACTERISTICS

CARACTERÍSTICA TÉCNICA TECHNICAL CHARACTERISTIC	NORMA DE ENSAYO TEST STANDARD	REQUISITOS EXIGIDOS* DEMANDED REQUIREMENTS*	RESULTADO VITROGRES VITROGRES RESPONDS
LONGITUD Y ANCHURA LENGTH AND WIDTH	UNE-EN ISO 10545:2	± 0.5 %	± 0.2 %
GROSOR THICKNESS	UNE-EN ISO 10545:2	± 5 %	± 5 %
RECTITUD DE LOS LADOS WARPAGES OF EDGES	UNE-EN ISO 10545:2	± 0.5 %	± 0.2 %
OCTOGONALIDAD WEDGING	UNE-EN ISO 10545:2	± 0.5 %	± 0.2 %
PLANARIDAD FLATNESS	UNE-EN ISO 10545:2	± 0.5 %	± 0.3 %

CARACTERÍSTICAS FÍSICAS / PHYSICAL CHARACTERISTICS

CARACTERÍSTICA TÉCNICA TECHNICAL CHARACTERISTIC	NORMA DE ENSAYO TEST STANDARD	REQUISITOS EXIGIDOS* DEMANDED REQUIREMENTS*	RESULTADO VITROGRES VITROGRES RESPONDS
ABSORCIÓN DE AGUA WATER ABSORPTION	UNE-EN ISO 10545:3	E ≤ 0.5%	E ≤ 0.1%
RESISTENCIA A LA ABRASIÓN SCRATCH RESISTANCE	UNE-EN ISO 10545:7	V	PEI 5 Uso en pavimento de tráfico peatonal intenso PEI 5 For use in high pedestrian traffic areas
RESISTENCIA AL CHOQUE TÉRMICO RESISTANCE TO THE THERMAL SHOCK	UNE-EN ISO 10545:9	Metodo de ensayo Test method	Sin alteración No alteration
RESISTENCIA A LA HELADA FROST RESISTANCE	UNE-EN ISO 10545:12	Exigido Required	Resiste Resist
DUREZA AL RAYADO (MOHS) SCRATCH HARDNESS (MOHS)	EN-UNE 101:1991	Mínimo: 6 Minimum: 6	Mosh 6
RESISTENCIA A LA FLEXIÓN BENDING STRENGTH	UNE-EN ISO 10545:4	≥ 35 n/mm.	66.8 N/mm.

CARACTERÍSTICAS QUÍMICAS / CHEMICAL CHARACTERISTICS

CARACTERÍSTICA TÉCNICA TECHNICAL CHARACTERISTIC	NORMA DE ENSAYO TEST STANDARD	REQUISITOS EXIGIDOS* DEMANDED REQUIREMENTS*	RESULTADO VITROGRES VITROGRES RESPONDS
RESISTENCIA A LOS PRODUCTOS QUÍMICOS (BAJAS CONCENTRACIONES) RESISTANCE TO CHEMICALS (LOW CONCENTRATIONS)	UNE-EN ISO 10545:13	Según especifique fabricante According to manufacturer's classification	GLA - Sin alteración GLA - No alteration
RESISTENCIA A LOS PRODUCTOS QUÍMICOS DE USO DOMÉSTICO Y SALES PARA PISCINA RESISTANCE TO HOUSEHOLD CHEMICALS AND SWIMMING POOL SALTS	UNE-EN ISO 10545:13	GB	GA - Sin alteración GA - No alteration
RESISTENCIA A LAS MANCHAS STAIN RESISTANCE	UNE-EN ISO 10545:14	Clase ≥ 3 Class ≥ 3	Clase 5 Class 5

* NORMA DE REFERENCIA/REFERENCE STANDARD: UNE-EN 14411 ISO 13006



Colocación / Laying

INSTALACIÓN CON PAPEL ENCOLADO / PAPER-FACED LAYING SYSTEM

1. Extender con una llana dentada una capa de cemento cola de 2 a 3mm. / Spread a layer of glue cement 2-3mm thick using a toothed spatula or trowel.

2. Colocar las placas VITROGRES. / Place the VITROGRES sheets.

3. Golpear con una llana de goma o madera. / Strike with a wooden or rubber trowel.

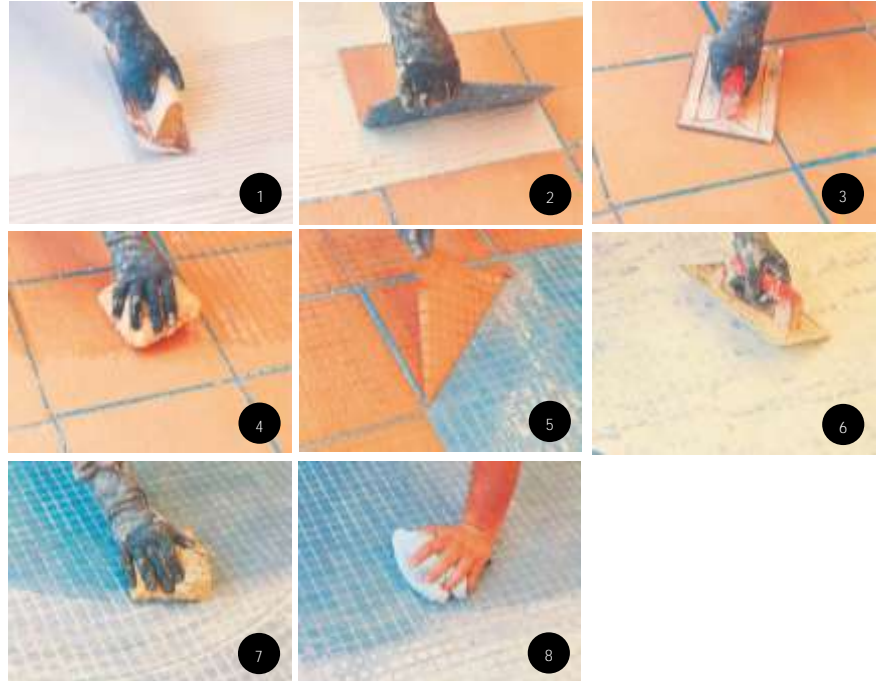
4. Mojar el papel. / Wet the paper.

5. Retirar el papel y limpiar el adhesivo. / Take this covering paper and remove the adhesive.

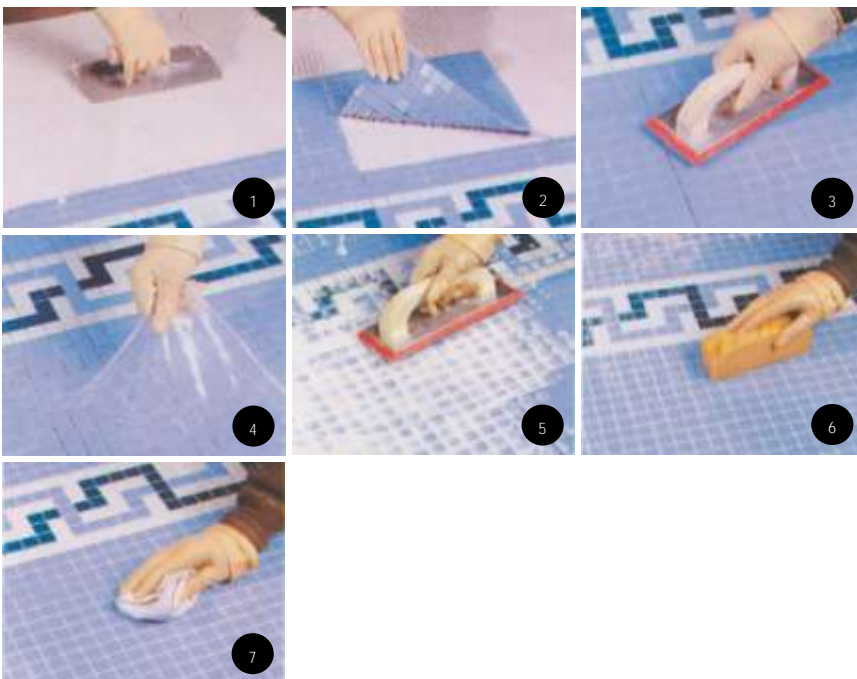
6. Rellenar las juntas. / Fill the joints.

7. Limpiar con esponja húmeda. / Use a damp sponge to finish off the joints.

8. Terminar la limpieza con un trapo seco. / Finish cleaning with a dry cloth.



INSTALACIÓN CON PLÁSTICO TRANSPARENTE / PLASTIC-FACED LAYING SYSTEM



1. Extender con una llana dentada una capa de cemento cola de 2 a 3mm. / Spread a layer of glue cement 2-3mm thick using a toothed spatula or trowel.

2. Colocar las placas VITROGRES, más fácil gracias al plástico transparente. / Place the VITROGRES sheets, easier thanks to the transparent plastic.

3. Golpear con una llana de goma o madera. / Strike with a wooden or rubber trowel.

4. Quitar el plástico, sin necesidad de limpiar adhesivo. / Remove the plastic. Not be necessary to clean the tiles.

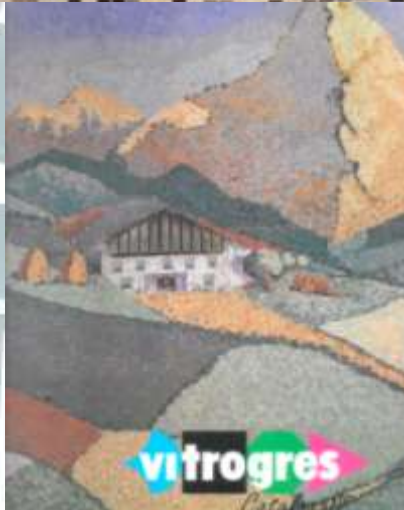
5. Rellenar las juntas. / Fill the joints.

6. Limpiar con esponja húmeda. / Use a damp sponge to finish off the joints.

7. Terminar la limpieza con un trapo seco. / Finish cleaning with a dry cloth.

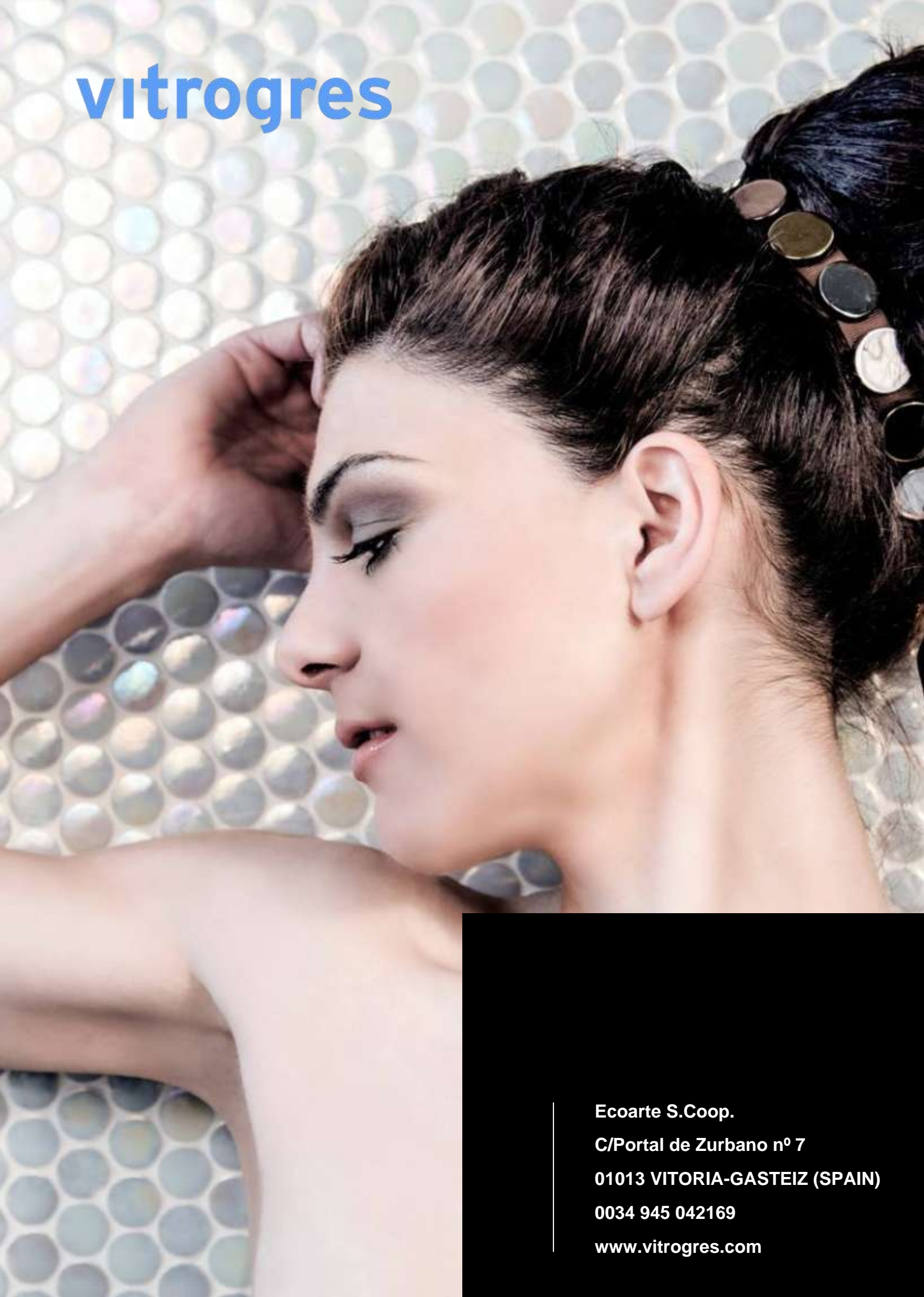


Agradecimientos/Special thanks to:



VITROGRES MOSAICO - DECADAS INNOVANDO / VITROGRES MOSAIC - DECADES OF INNOVATION

vitrogres



Ecoarte S.Coop.
C/Portal de Zurbano nº 7
01013 VITORIA-GASTEIZ (SPAIN)
0034 945 042169
www.vitrogres.com