

vitrogres

CATALOGO

CATALOGUE



Vintage

Vintage



MOD E-2 /01

VITROGRES VINTAGE es más que una colección, o una tendencia de decoración. Es un **PROYECTO** de **VITROGRES MOSAICO** para la recuperación de diseños, usos, formatos y colores tradicionales en el mosaico.

En **VITROGRES VINTAGE** los recuperamos y los actualizamos para crear conseguir estética retro pero absolutamente contemporánea a la vez.

Siempre con la posibilidad de personalizar cualquier diseño para usted.

Te invitamos a ir de nuestra mano en este viaje por el tiempo.

VITROGRES VINTAGE is more than a collection or a decoration trend. It is a PROJECT by VITROGRES MOSAICO to recover traditional designs, applications, sizes and colours in mosaic.

In VITROGRES VINTAGE we recover and update them to create retro-aesthetics, which are absolutely contemporary at the same time.

We always have the possibility to customize any design for you.

We invite you to travel in time with us.





vitrogres

Vintage



MOD E2/02 + E-2162-A

vitrogres

Simply



MOD 06

SIMPLY

La propuesta más sencilla para crear ambientes Vintage es esta selección de diseños de 1 placa, que unidos crean un conjunto clásico y armonioso.

The simplest proposal to create a Vintage atmosphere is this assortment of 1-sheet designs that, when gathered together, create a classical and harmonious ensemble.



MOD 03



MOD 01



MOD 02



MOD 04



MOD 11



MOD 12



MOD 05



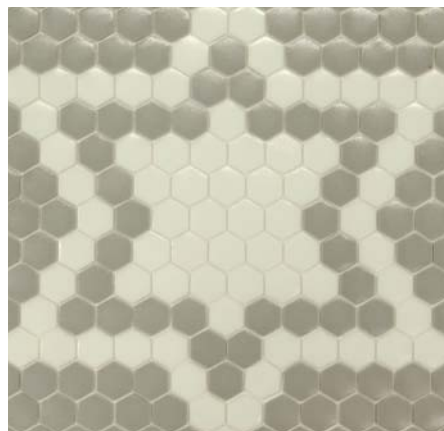
MOD 07



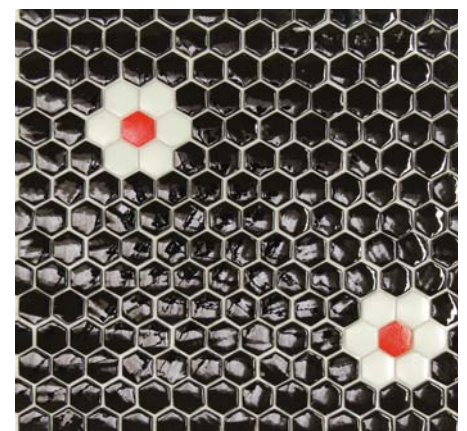
MOD 09



MOD 06



MOD 08



MOD 10



R-23162-A

CLASSIC

Dentro de la colección de **VITROGRES MOSAICO** hay varios formatos y acabados que usados por si solos crean un aspecto Vintage. Mención especial merecen en este apartado el formato hexagonal y los acabados **MATE** y **OPAK**.

*Within the **VITROGRES MOSAICO** collection there are many sizes and finishes that, when used on their own, create a Vintage look. Special mention merits in this section the hexagonal size and **MATT** and **OPAK** finishes.*



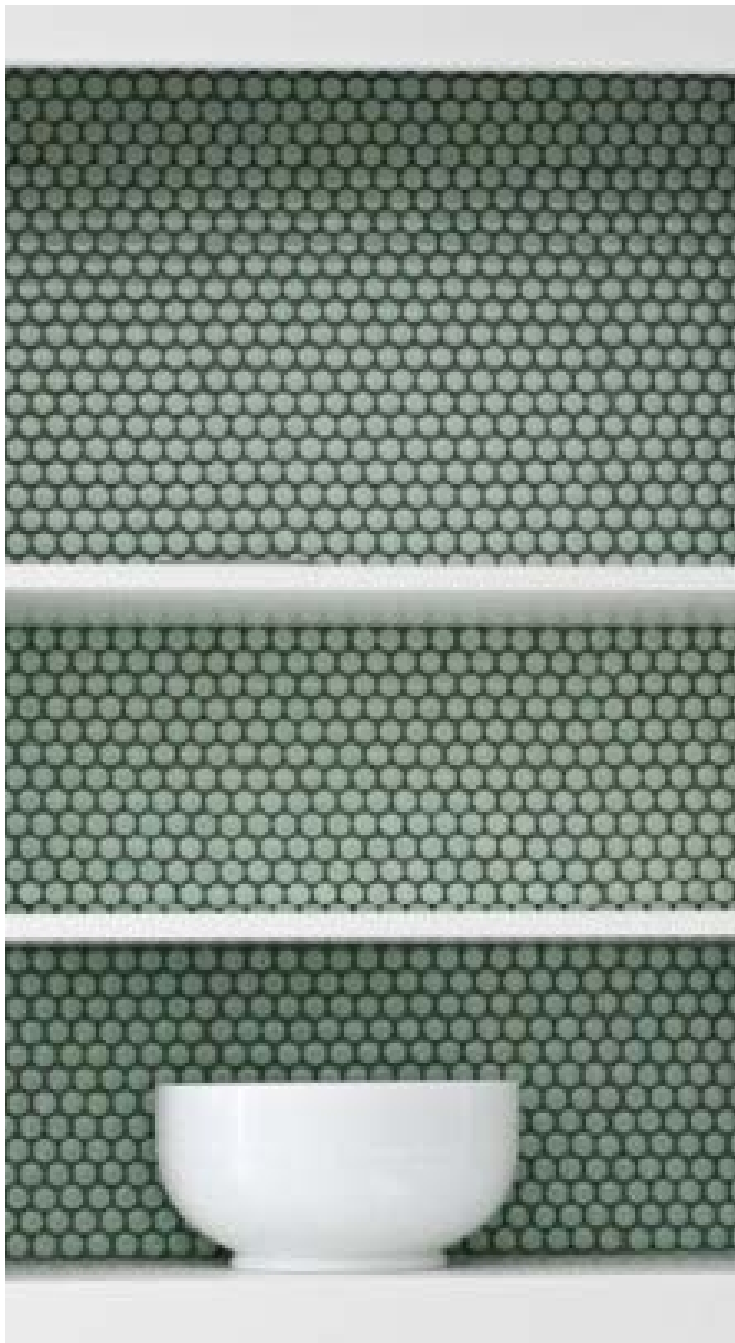


R-23311-B



R-23168-B



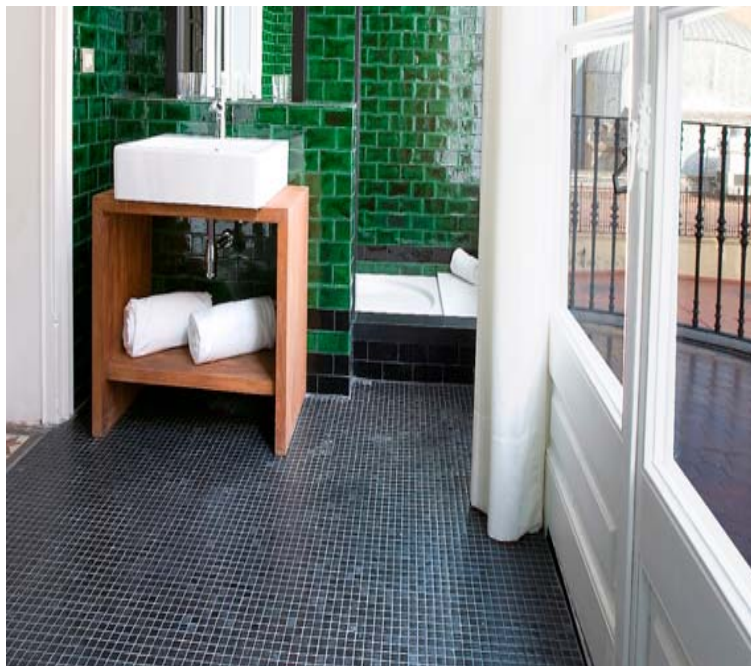






Formatos redondos y hexagonales en varios tamaños, en colore mates o lisos, mezclas...

Round and Hexagonal tiles in different sizes, in matt or plain colours, mixtures...



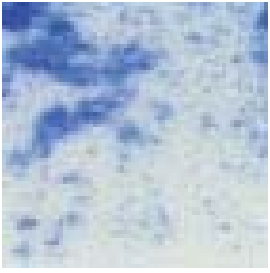
Otras posibilidades son

Other possibilities to create a Vintage look are:

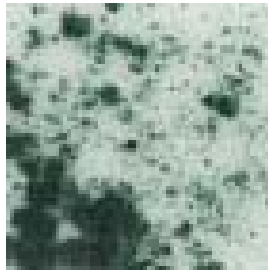
Nuestra colección DECOARTE, acabados anti-deslizantes, formato 50x50 mm

Our Decoarte Collection, antislips, 50x50 mosaics





100-A



103-A



104-A



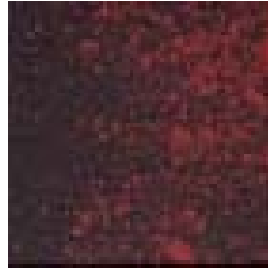
105-A



106-A



126-B



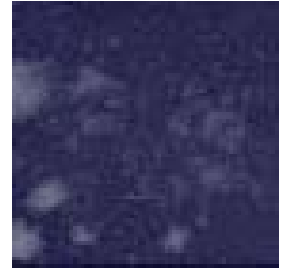
127-B



129-B



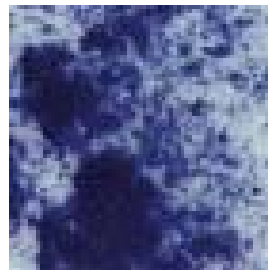
130-B



131-B



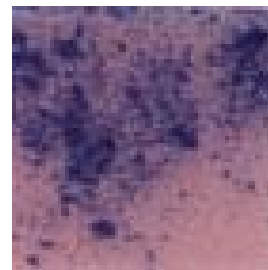
132-B



133-B



134-A



135-A



136-A

Nuestra gama de colores JASPES

Our SPECKLED series



Formato OVAL / *Oval size*



Mikra 8x8 mm



Porto



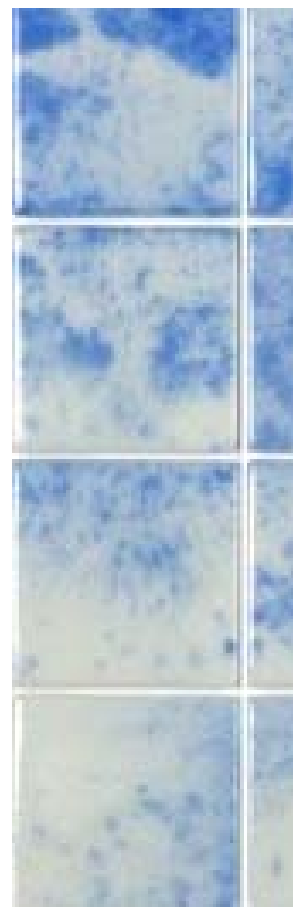
PORTO

Esta es una gama de reproducciones modulares de motivos Vintage, se presenta en el tradicional azul y blanco, imitando los tradicionales azulejos portugueses, y puede adaptarse a cualquier otra combinación de colores.

Como siempre, puede pedirse un único, modelo, una combinación de varios, o el juego completo para crear un ambiente de patchwork.

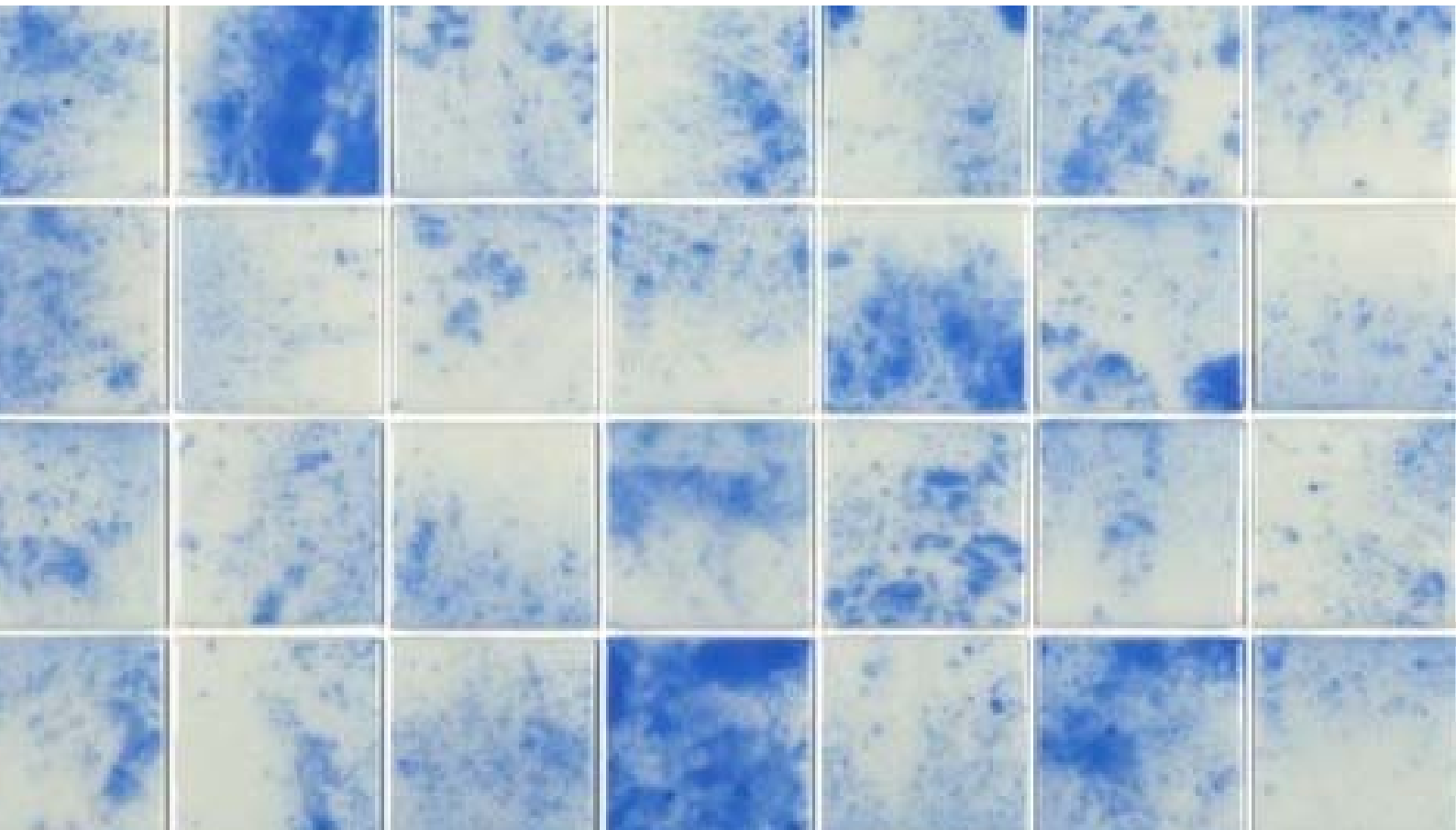
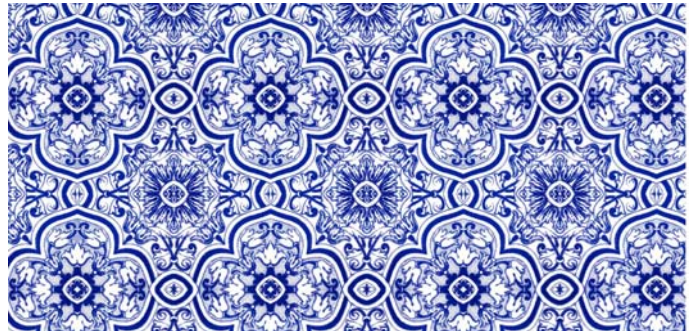
This is a range of modular reproductions of Vintage motifs presented in traditional blue and White colours and emulating the traditional Portuguese tiles. This range may be adapted to any colour combinations.

As usual, you can order a single model or a combination of several ones, as well as a full set, to create a patchwork look.

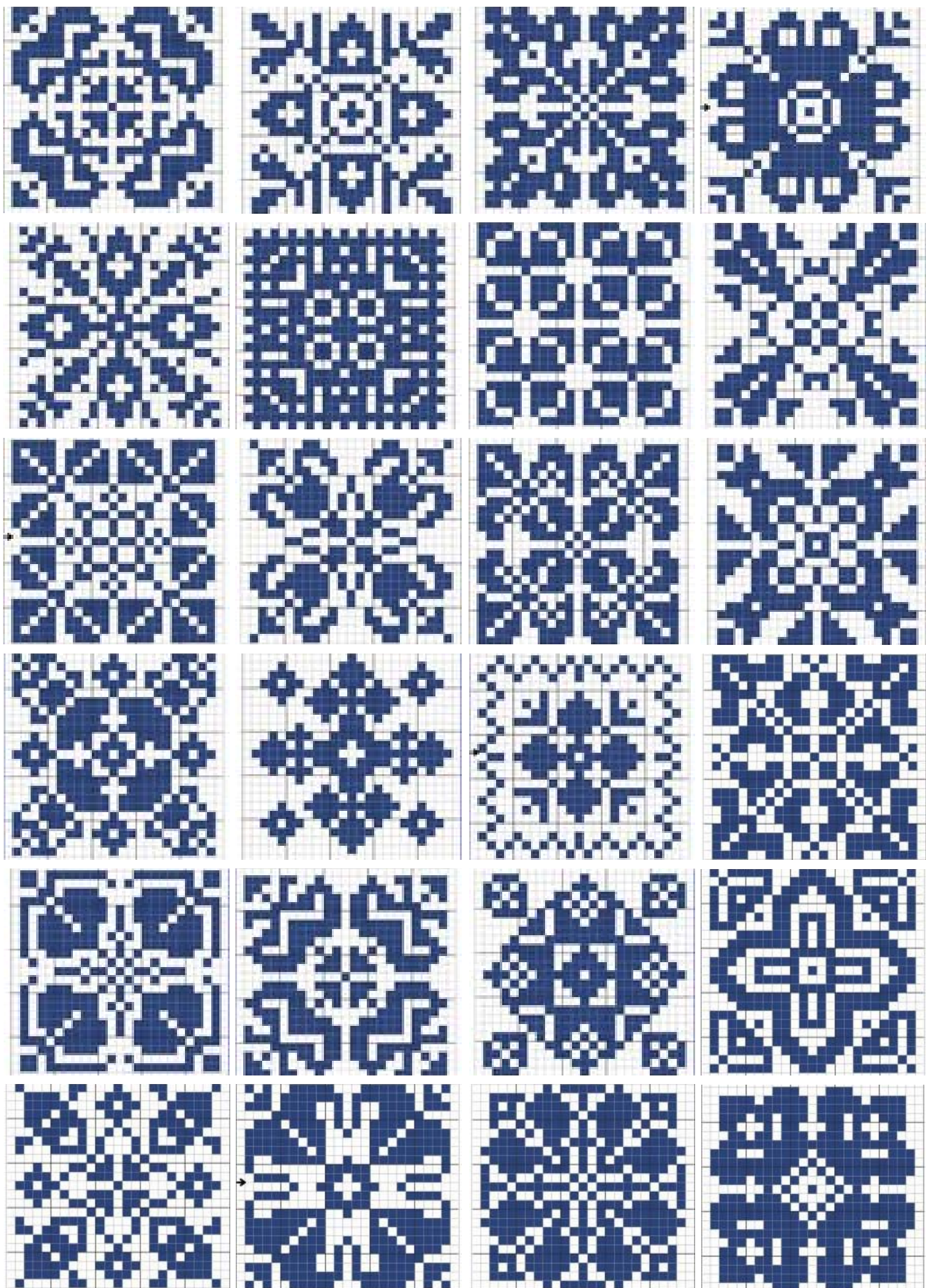


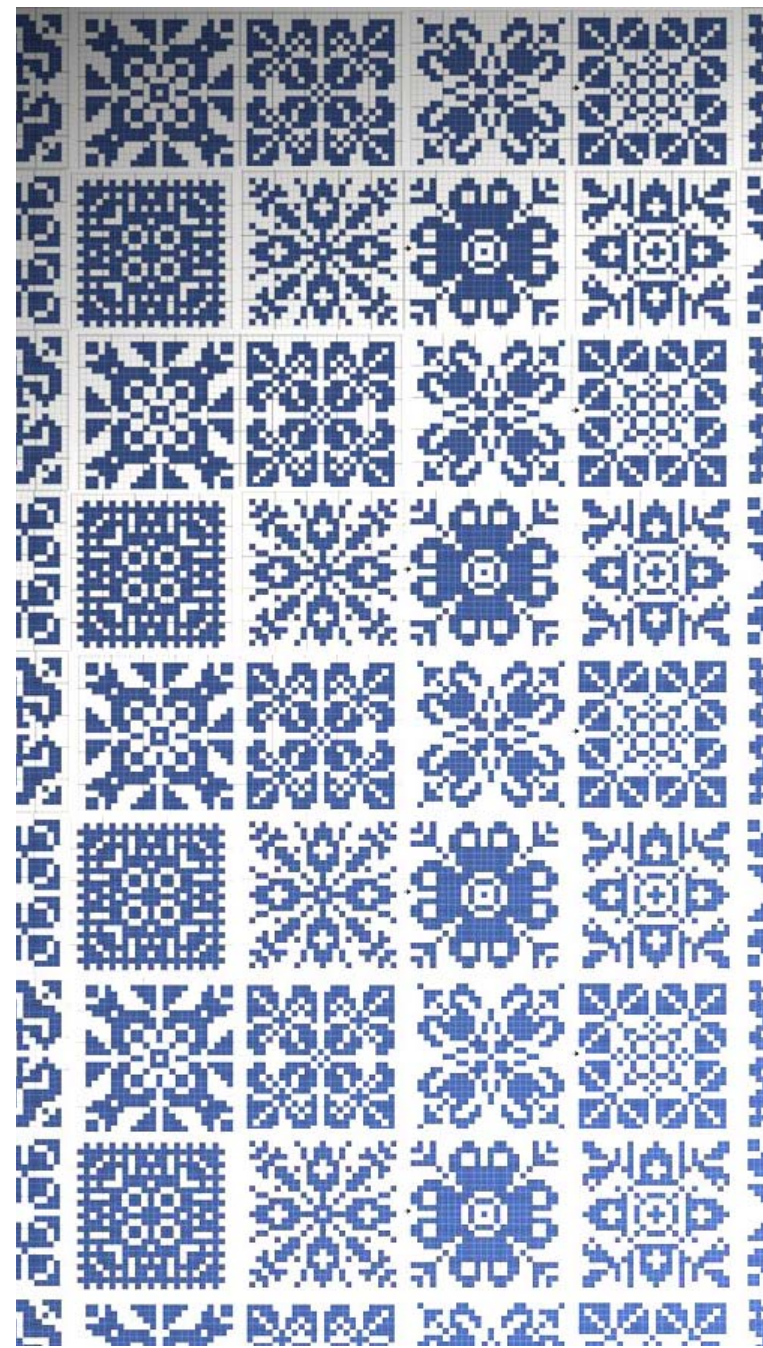
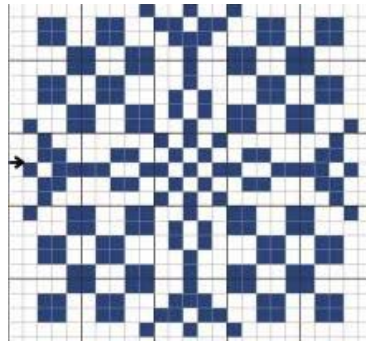
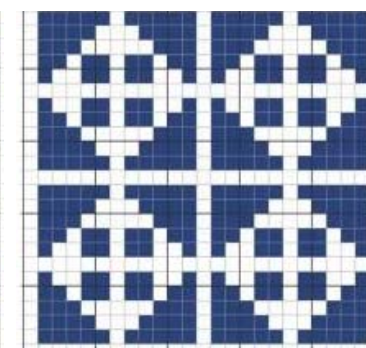
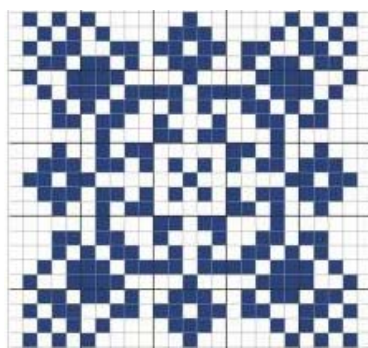
vitrogres

Porto



vitrogres





Hidraulic

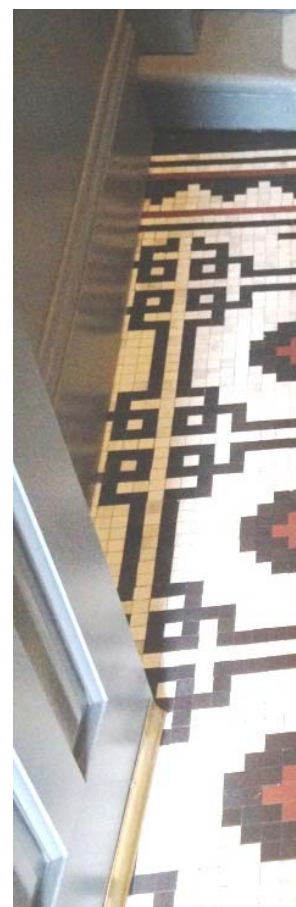


Una de las tendencias de decoración más actuales es la vuelta a los motivos retro, y el uso, sobre todo en suelos, pero también como revestimiento de los mosaicos hidráulicos.

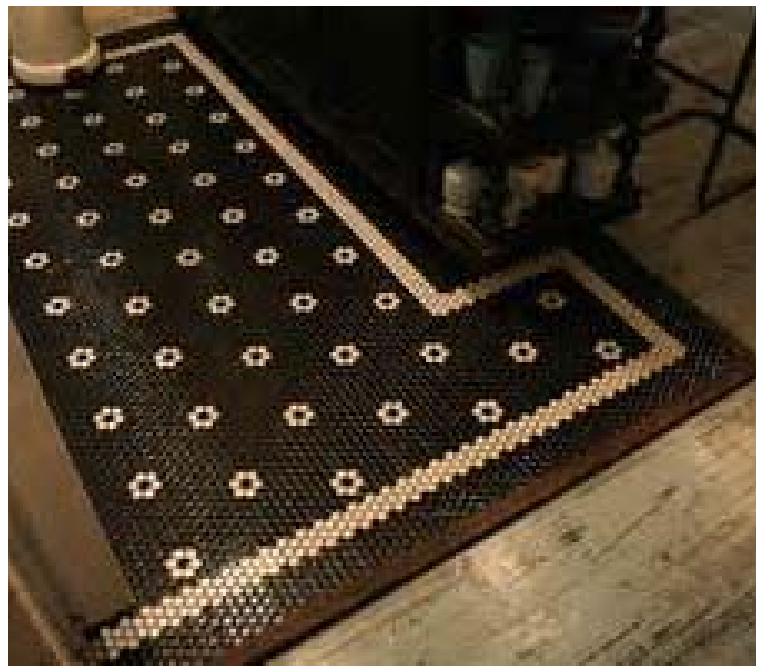
Este tipo de decoración, que vivió su auge en los años 20 se desarrolló tanto con baldosas con motivos y geometrias repetitivas (algunos imitando mosaicos) como con mosaicos.

La recuperación de estos motivos, de los colores y de las texturas de estos materiales nos permitirá combinarlos con elementos Vintage, pero también con muebles y materiales modernos. El resultado será siempre destacable por su vivacidad y color.

Vitrogres permite la personalización completa. Además de las propuestas de nuestra colección, se pueden hacer todo tipo de personalizaciones, reproducciones de antiguos motivos, combinaciones con cenefas, configurar alfombras o motivos, y adaptar todo ello a las medidas para un espacio concreto.









One of the most modern decor trends is the return to the retro motifs and the use, especially in floors, but also for walls, of hydraulic mosaics.

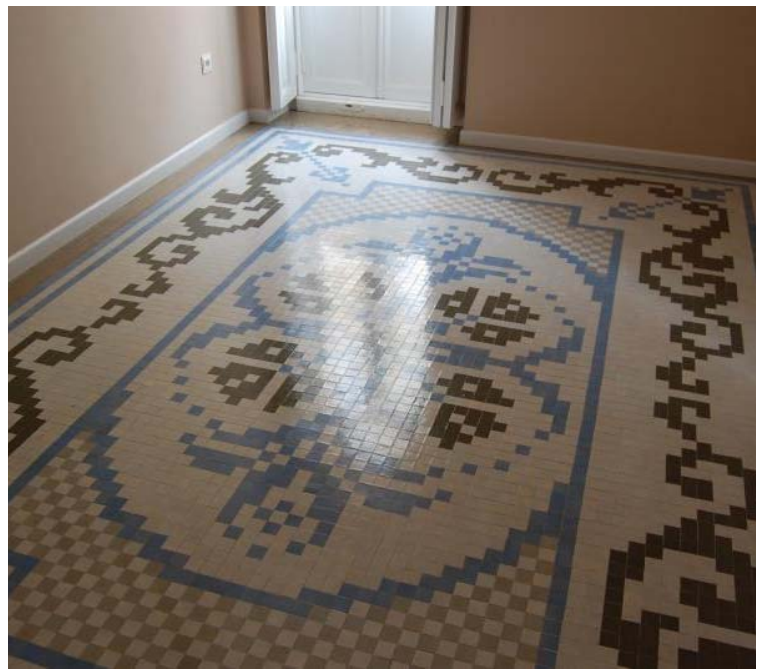
This type of decoration, which had its heyday in the 20s, developed both tiles with repetitive motifs and geometries (some imitating mosaics) and mosaics.

The recovery of these motifs, the colours and textures of these materials allow us to combine them with Vintage elements, but also with modern furniture and materials. The result will always be remarkable for its liveliness and colour.

Vitrogres allows complete customization. In addition to the proposals of our collection, we can do all kinds of customizations, reproductions of ancient motifs, combinations with friezes, we can also create carpets or motifs, and adapt all measures to a specific space.









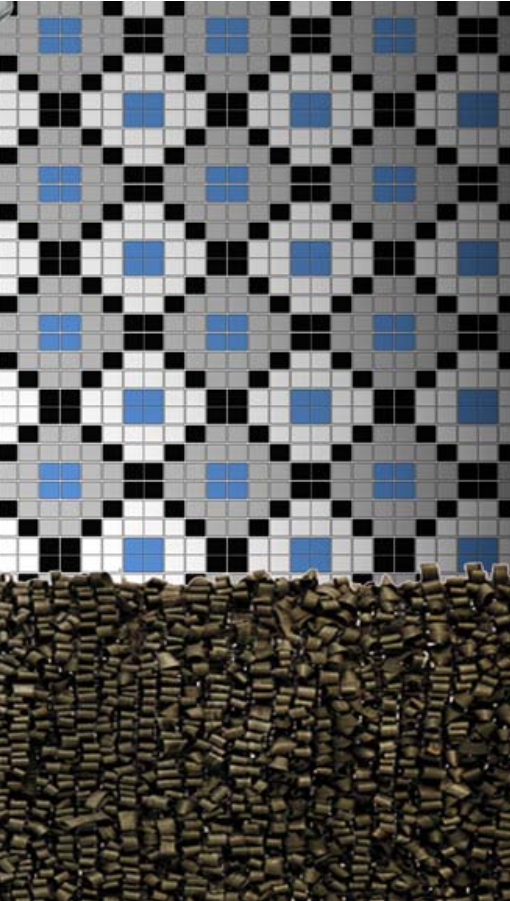


TERRAZO

Los colores, formatos y acabados de Vitrogres permiten obtener este resultado tradicional. Nuestro acabado mate, los suaves colores y texturas de este acabado, así como formatos como las teselas de 40x40mm son ideales para estas decoraciones.

Las características técnicas de nuestro mosaico permiten obtener el resultado requerido pero con todas las ventajas técnicas actuales. Una de las desventajas del mosaico hidráulico tradicional era su porosidad y la poca resistencia de sus colores. El mosaico Vitrogres resuelve este problema por completo, y su uso en suelos está garantizado también por su grado de antideslizamiento.



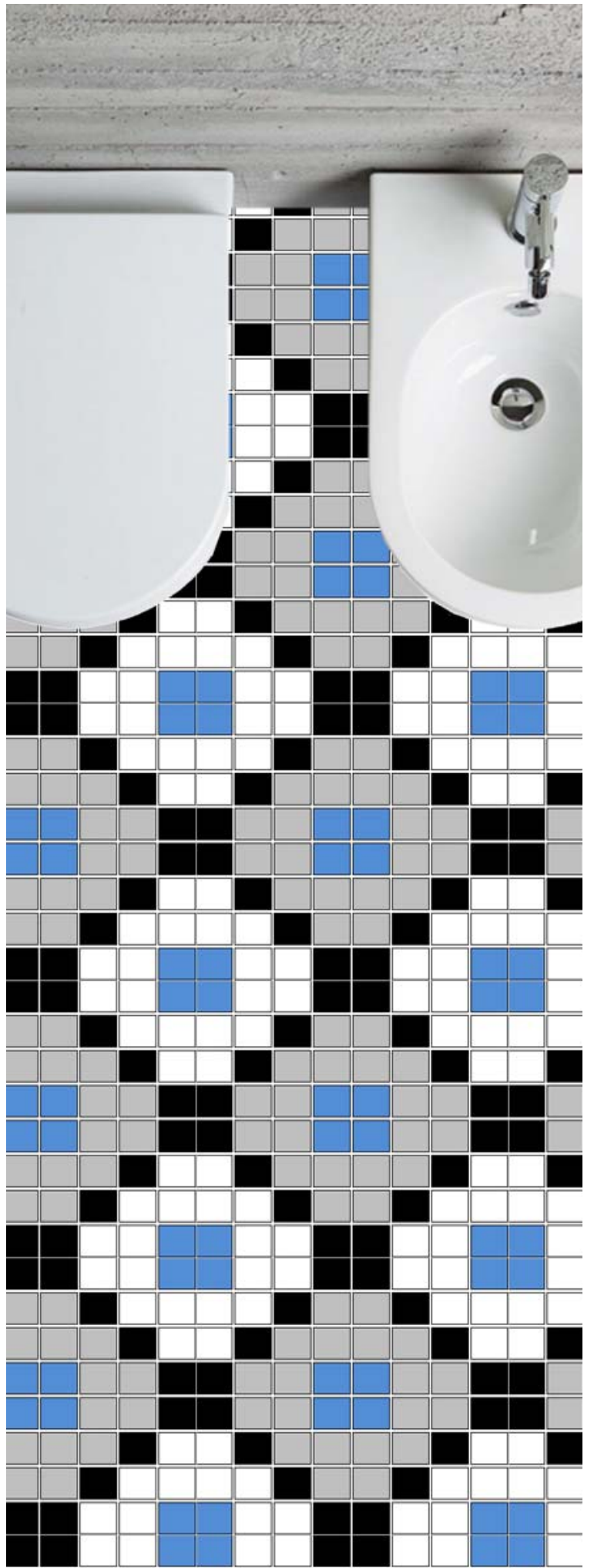


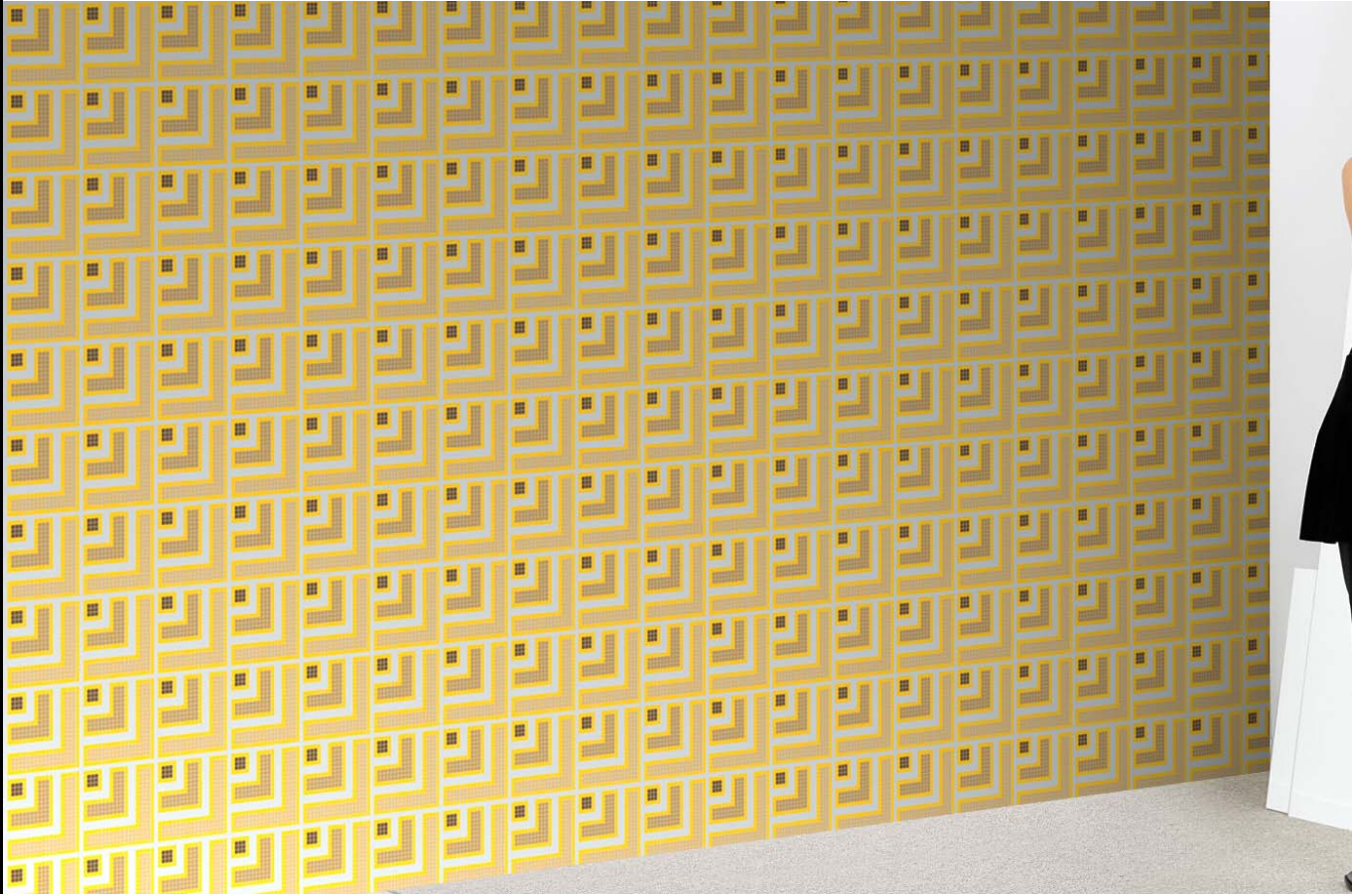
The colours, shapes and finishes of Vitrogres allow to obtain this traditional result. Our matt finish, soft colours and textures of this finish, as well as 40x40mm tiles, are ideal for these decorations.

The technical specifications of our mosaic can obtain the required result, but adding all current technical advantages. One of the disadvantages of the traditional hydraulic mosaic was its porosity and low resistance of its colours. Vitrogres mosaic solves this problem completely, and its use for flooring is also guaranteed by its degree of anti-slip resistance.









MODULAR

La creación de decoraciones modulares puede hacerse como la colección anterior, mediante la repetición de placas, o también adaptarse a a cualquier tipo de dibujo VINTAGE que se quiera imitar.

Puede usarse cualquier formato según el diseño requerido. Estas son algunas propuestas, y por supuesto podemos realizar cualquier proyecto personalizado.

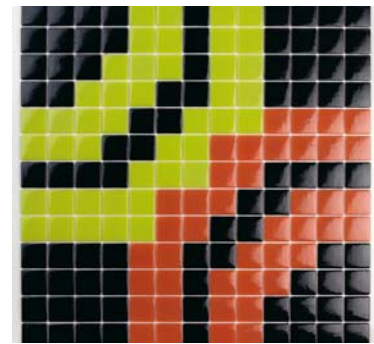
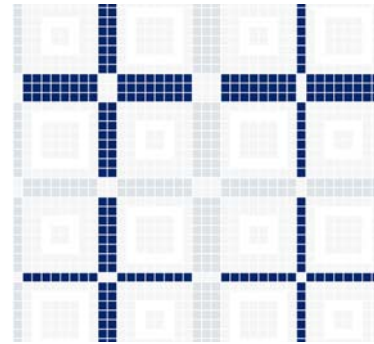
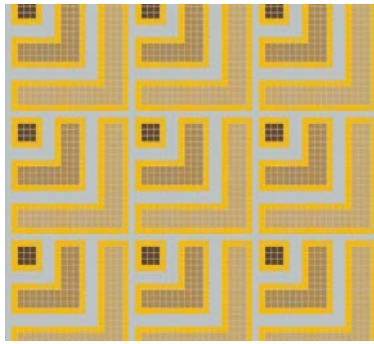
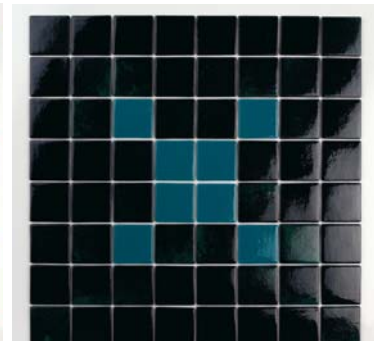
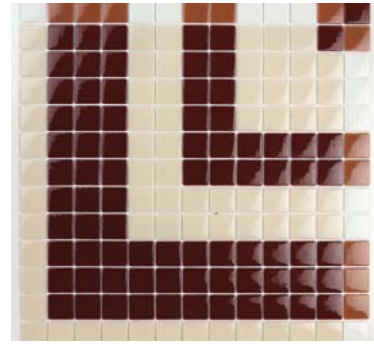
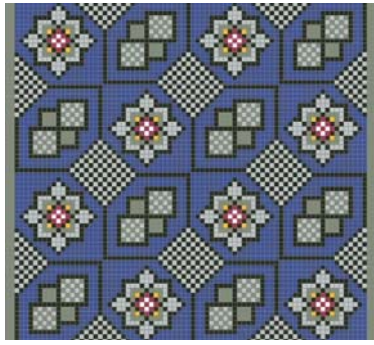
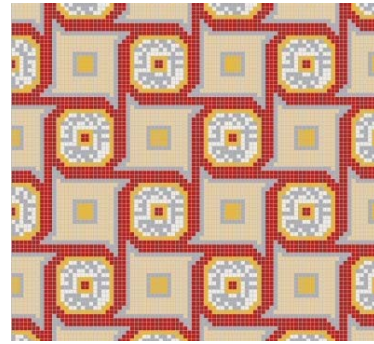
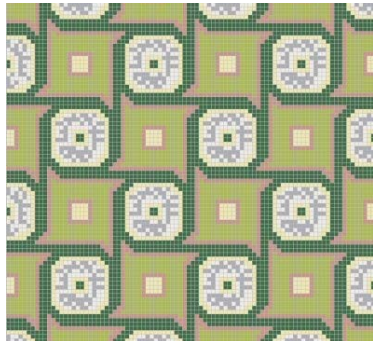
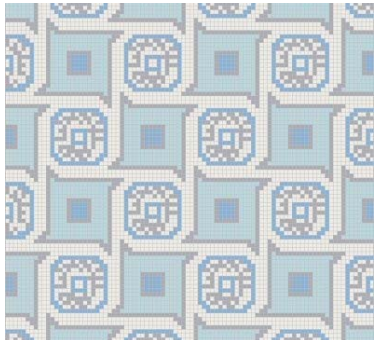


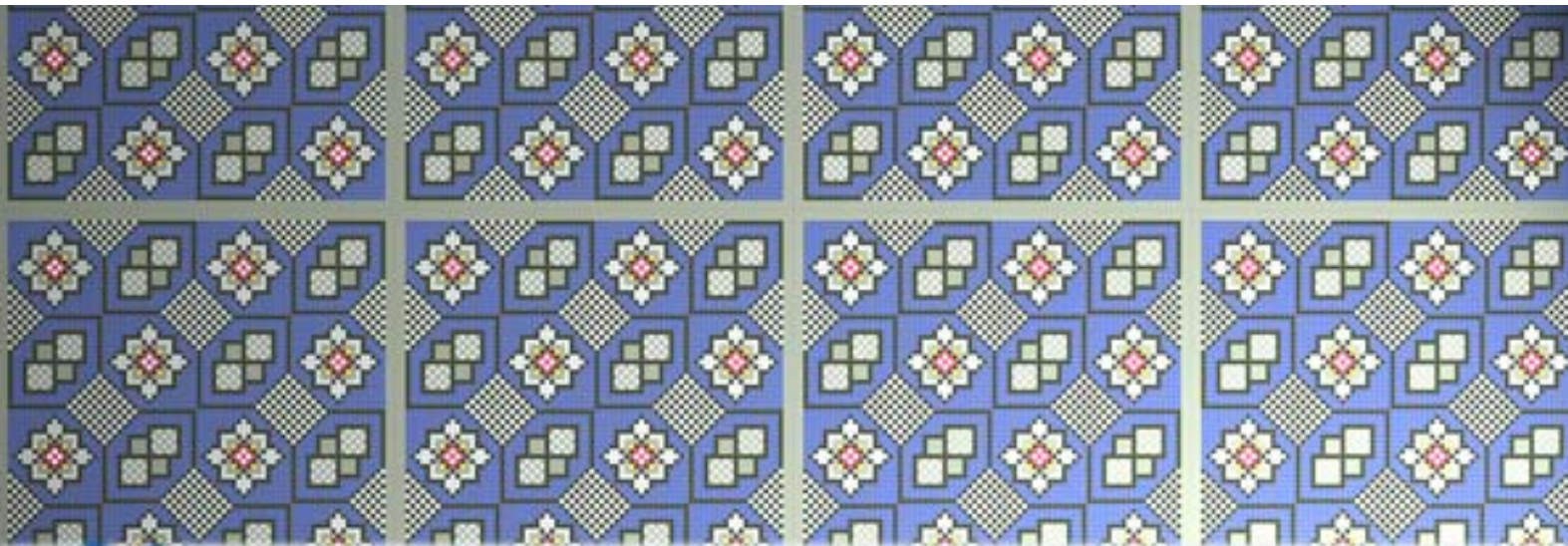
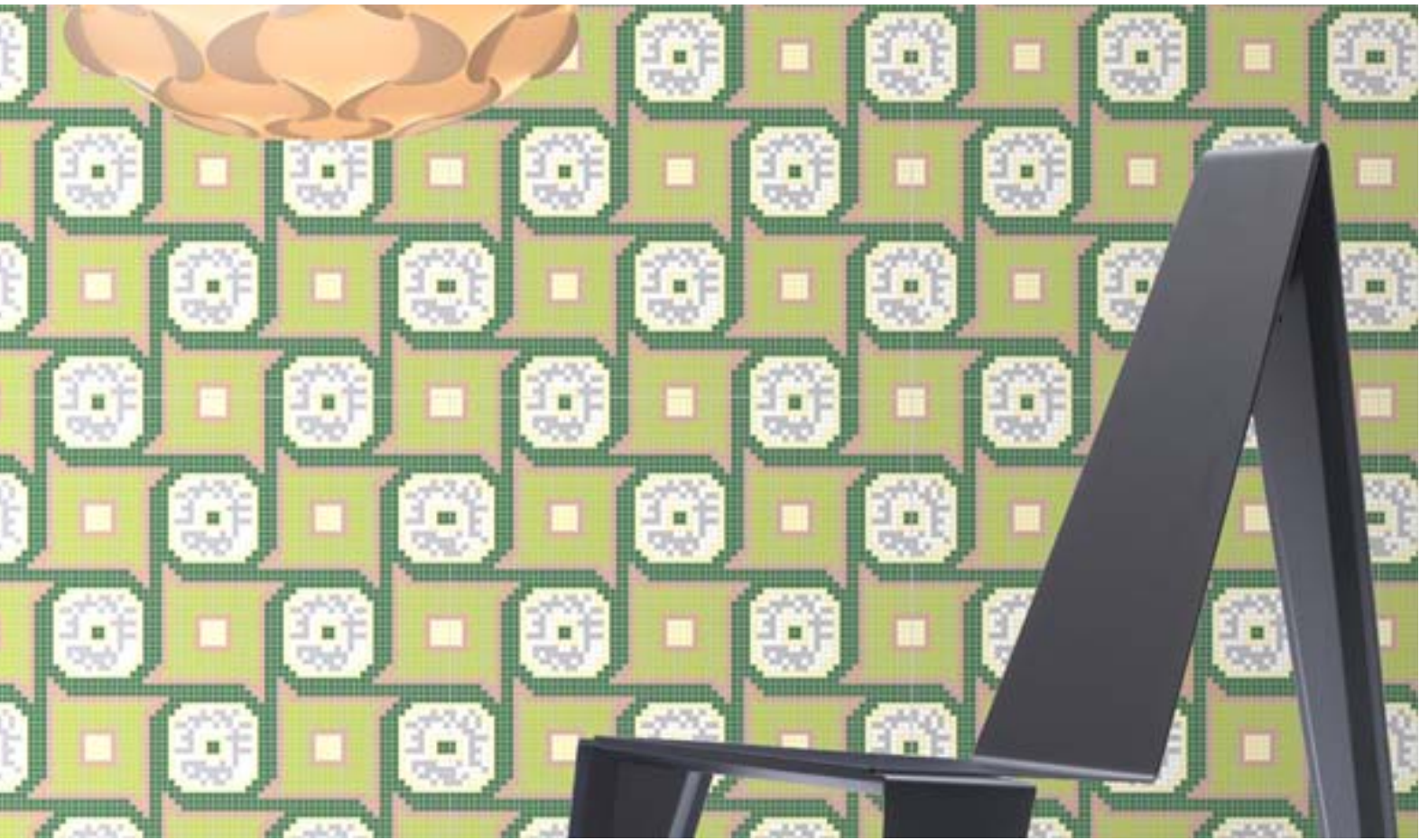


Modular decorations can be created as in the previous collection, by repeating sheets, or also accommodate to any VINTAGE design you want to imitate.

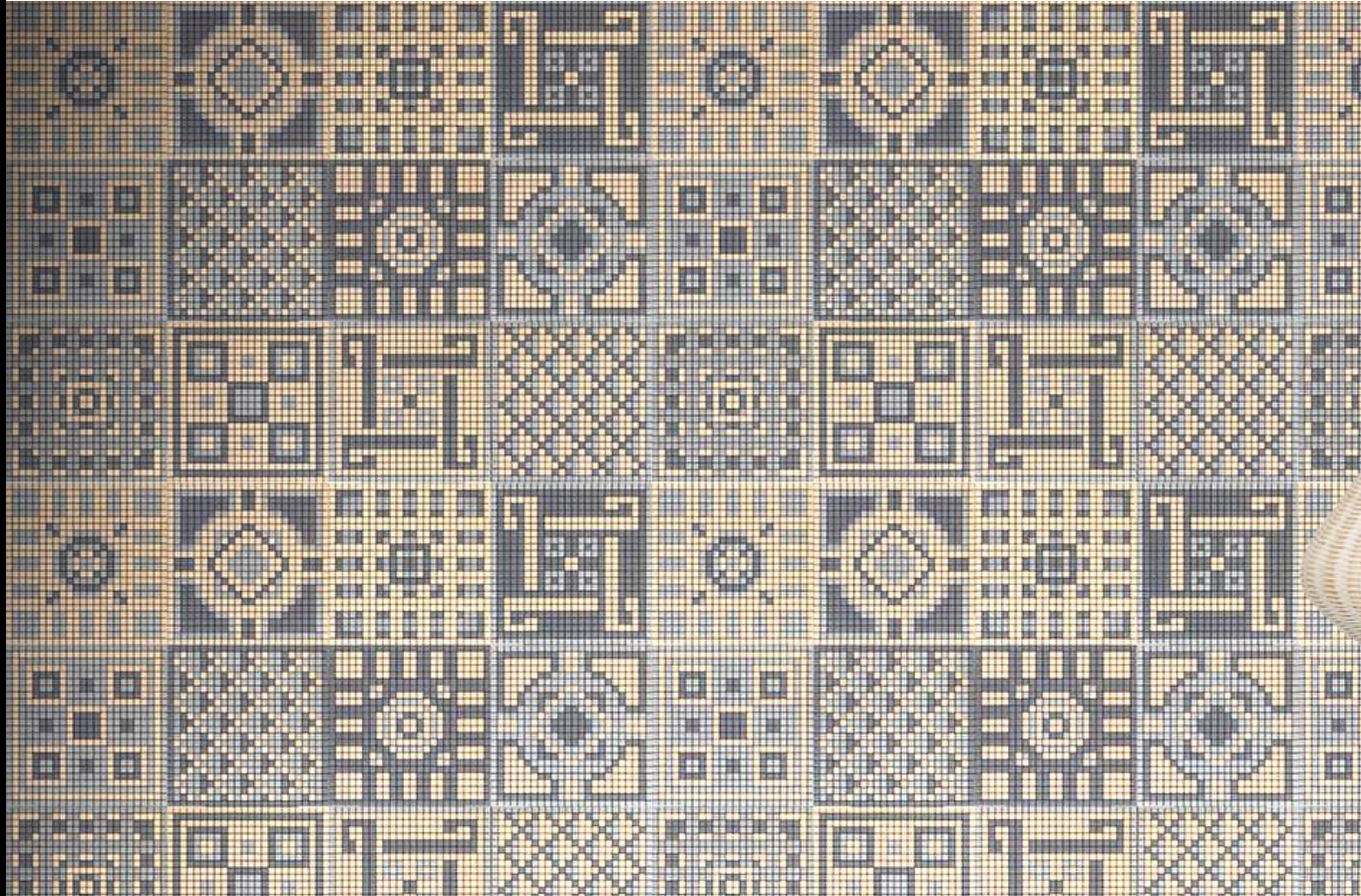
Any size may be used depending on the required design. These are some proposals, and, of course, we can make any custom project.







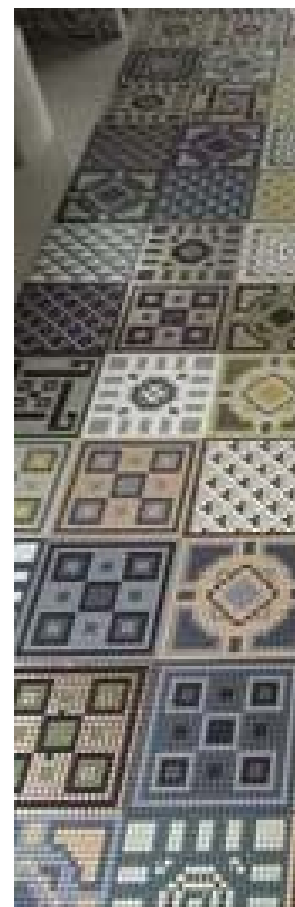
Old Fashion



OLD FASHION

Esta serie es la propuesta de una colección de palcas modulares en formato 15x15 intercambiables a modo de baldosa antigua. Bien combinables entre si o repitiendo el mismo modelo.

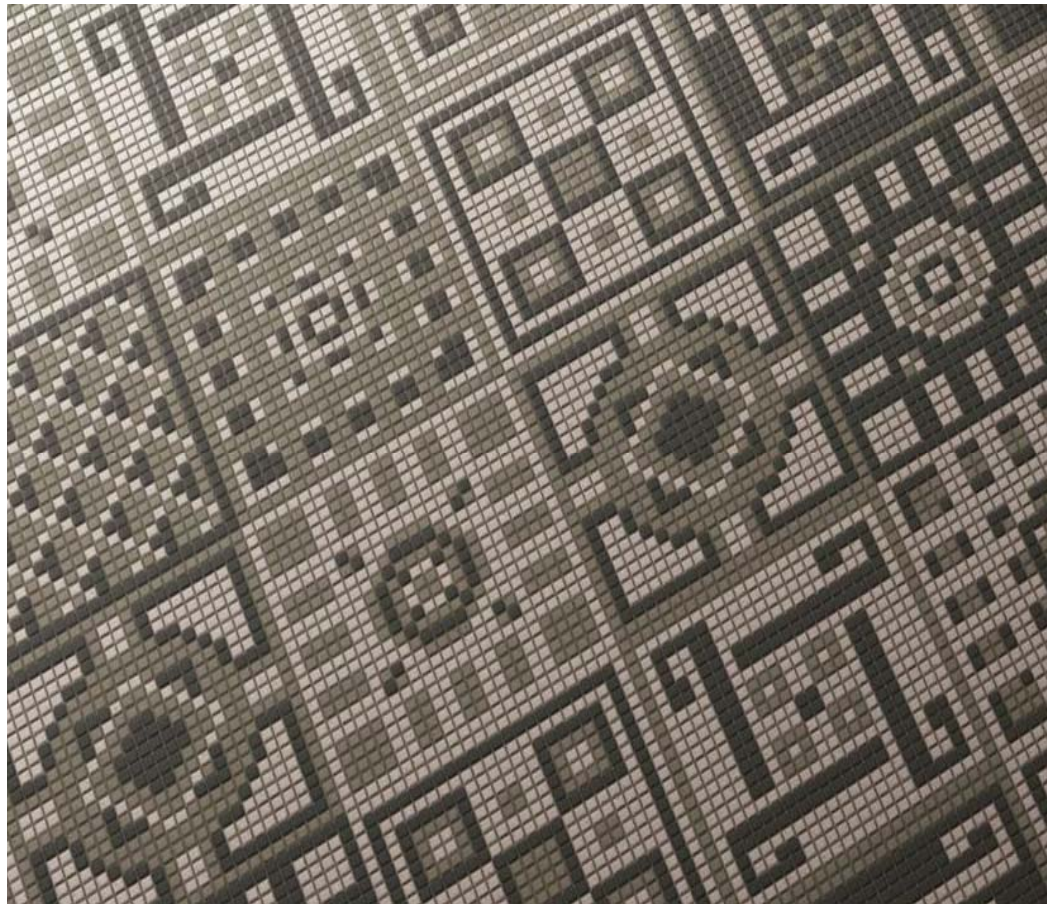
Le proponemos varias combinaciones de colores.

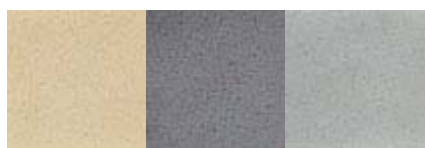
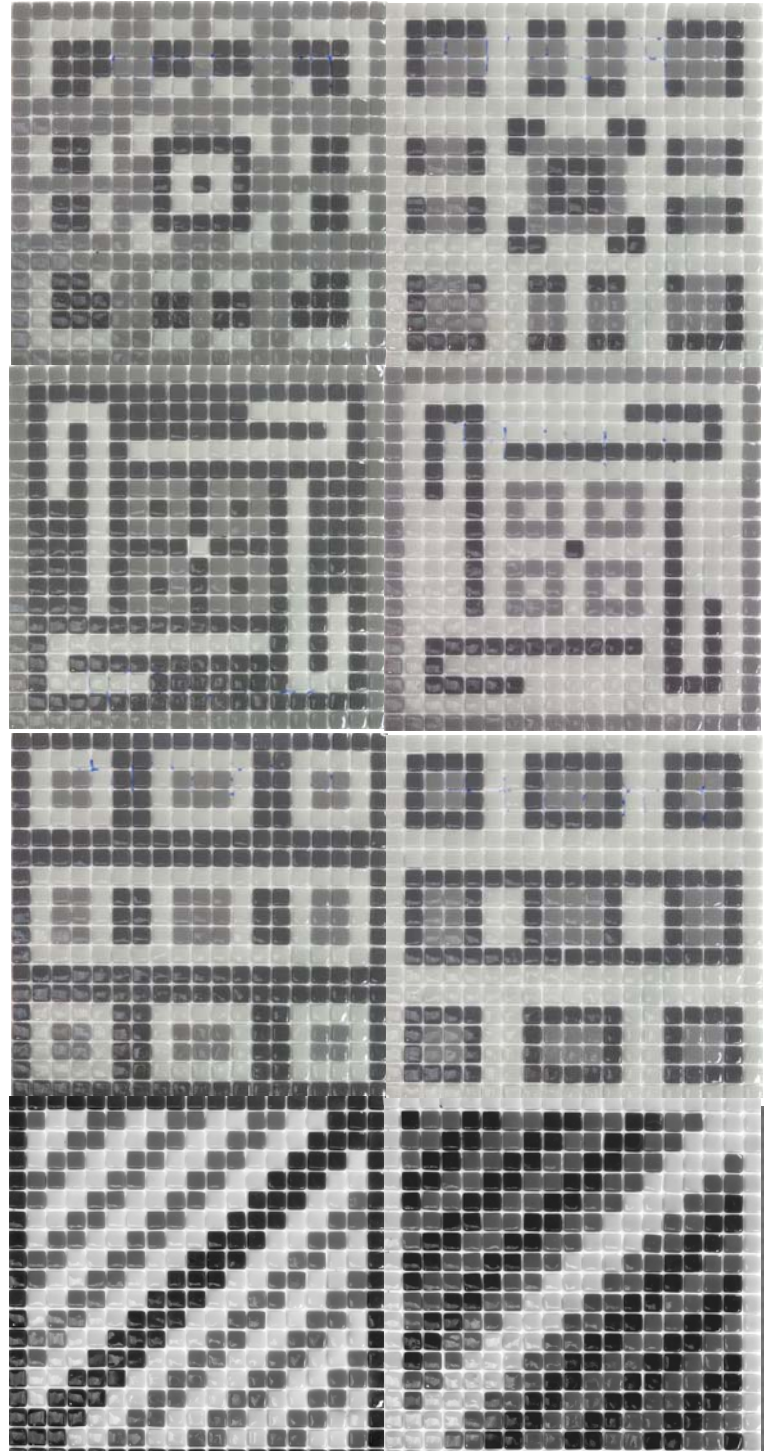
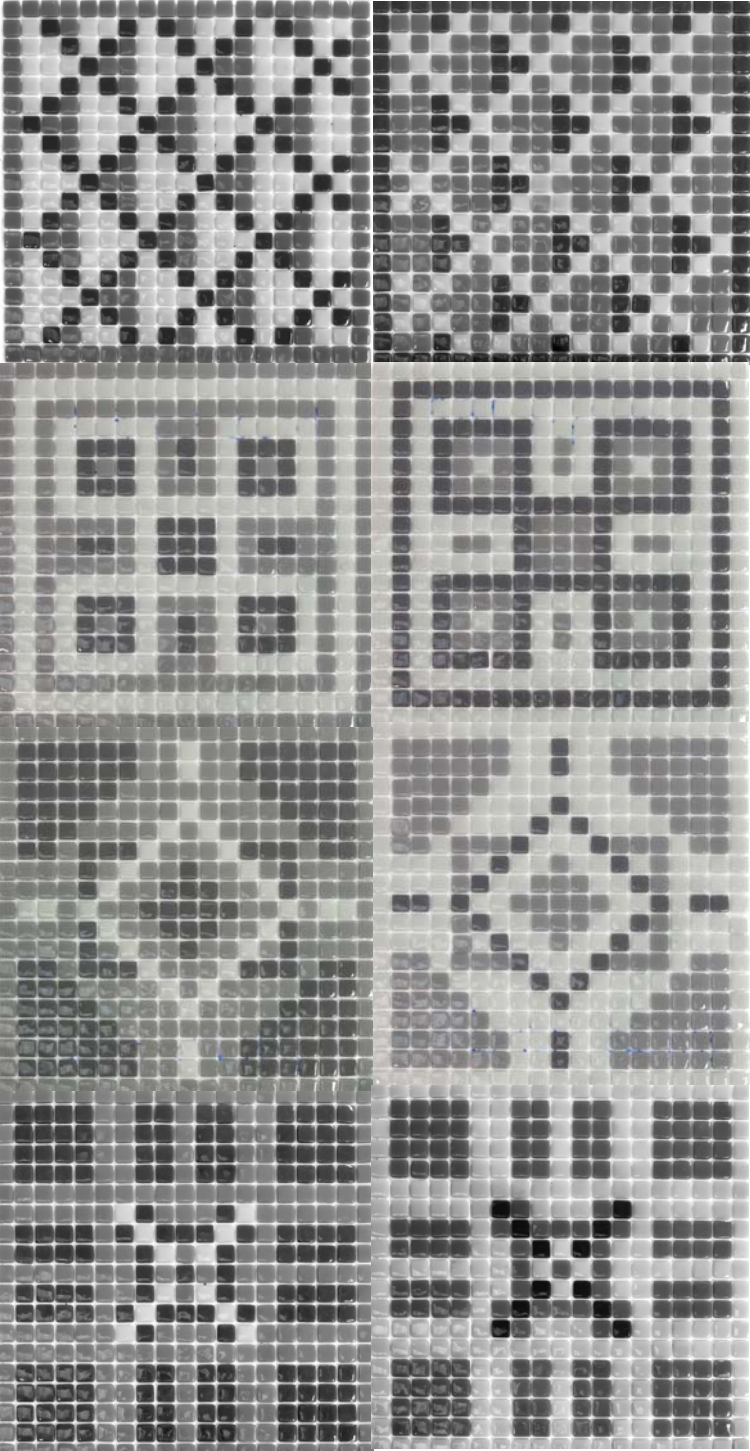




This series is the proposal of a collection of modular interchangeable sheets in 15x15 size as an old tile. They may be used combined together or repeating the same pattern.

We propose several colour combinations.





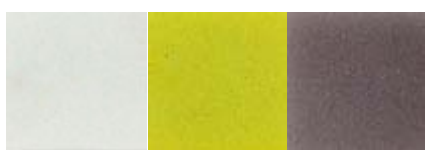
COMB. A



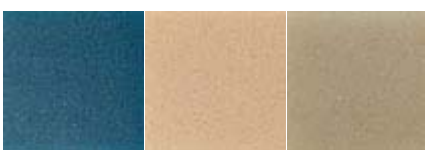
COMB. B



COMB. C



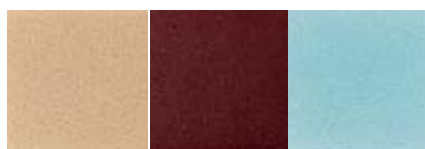
COMB. D



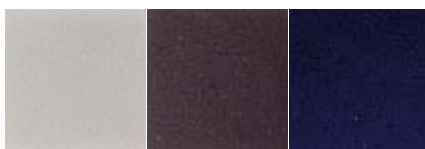
COMB. E



COMB. F



COMB. G



COMB. H



COMB. I





ARTISTICO

Hemos incorporado también la posibilidad de realizar trabajos a medida, incluso con ficha cortada, y combinaciones entre formatos, diferentes fondos y cenefas, etc... Ofreciendo soluciones estándar o totalmente a medida y personalizadas para proyectos.

ART

We have also incorporated the possibility of custom work, even with cut tiles, and combinations of sizes, different backgrounds and borders, etc. to offer standard or fully customized and personalized solutions for projects.



QUEENS
BOULEVARD

SPRING ST

51ST ST.-RIVER AV

RAINS-TO-MANHATT

WALL ST

PRINCE ST.

TO 19TH STREET
TO MORGAN AVE.

DOWN TOWN TRAINS
UP TOWN TRAINS

GRAND AVE.
NEWTOWN

28TH ST
← 28TH ST →

ABCDEF
GHIJKL
MNOPQ
RSTUVW
XYZ & 1ST





DISEÑOS

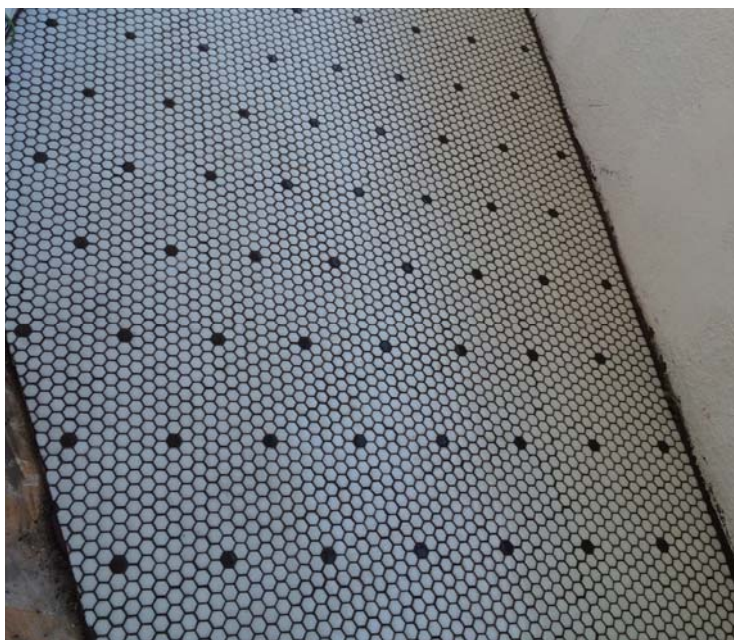
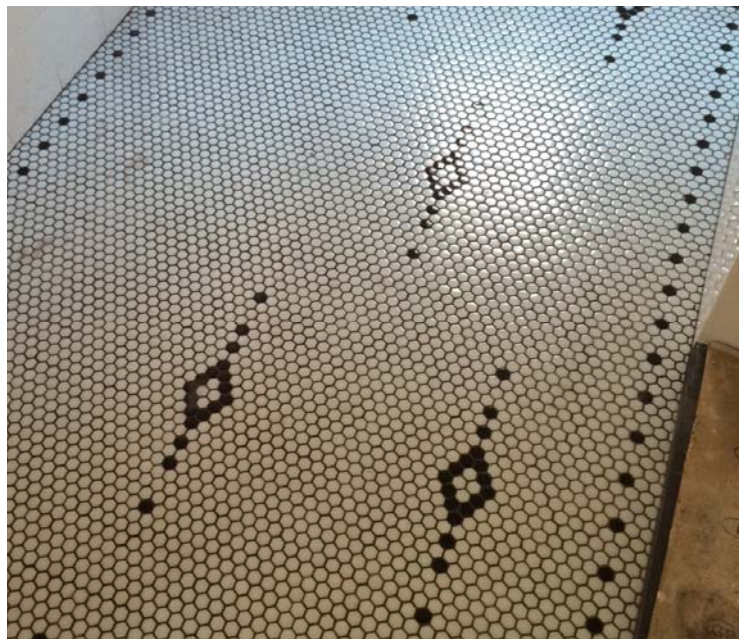
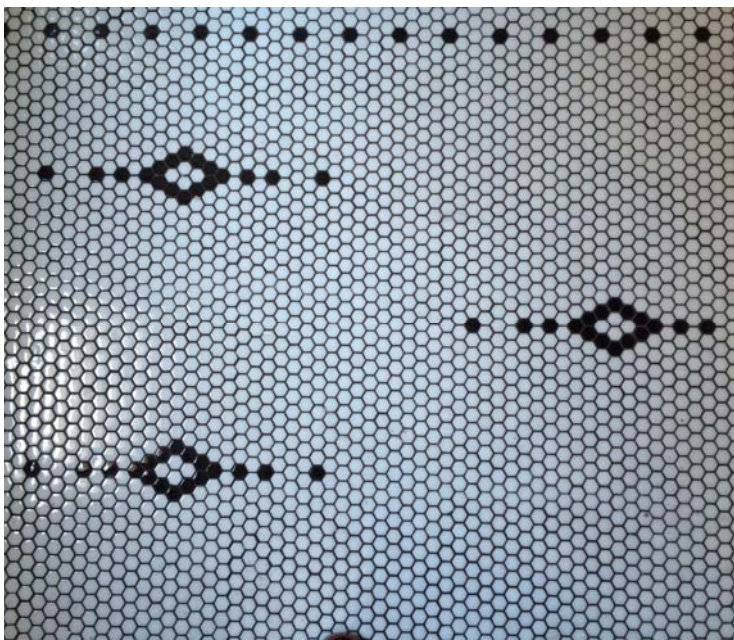
Cualquier decoración VINTAGE es posible en nuestra colección. Cuando el concepto SIMPLY de repetir una misma placa no es suficiente, elaboramos para usted un proyecto completo crenado cualquier tipo de diseño personalizado. Estas son algunas propuestas.

DESIGNS

Any VINTAGE decoration is possible in our collection. When the SIMPLY concept of repeating the same sheet is not enough, we prepare for you a complete project creating any custom design. Here are some suggestions.











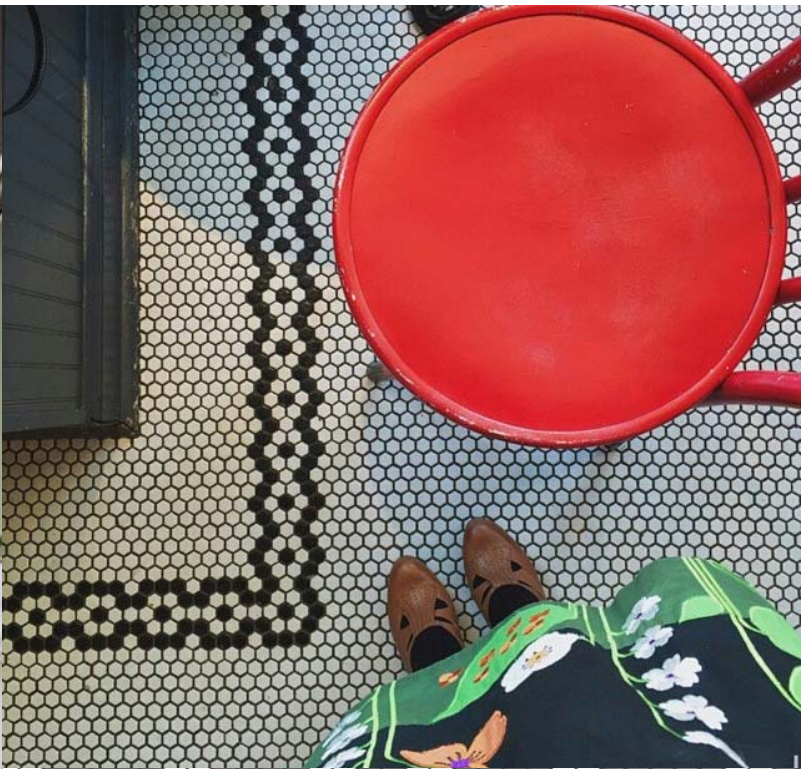






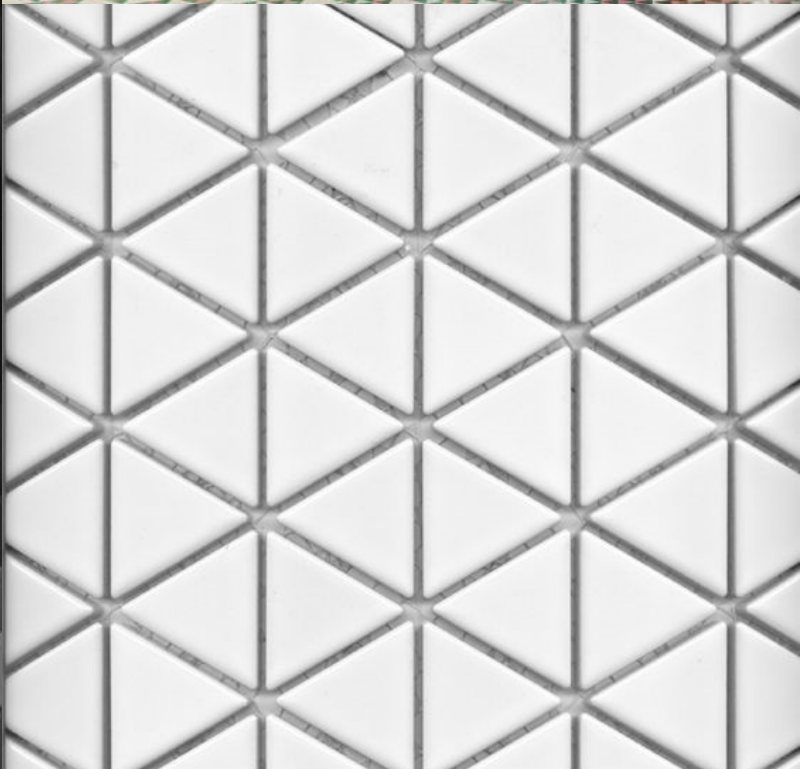














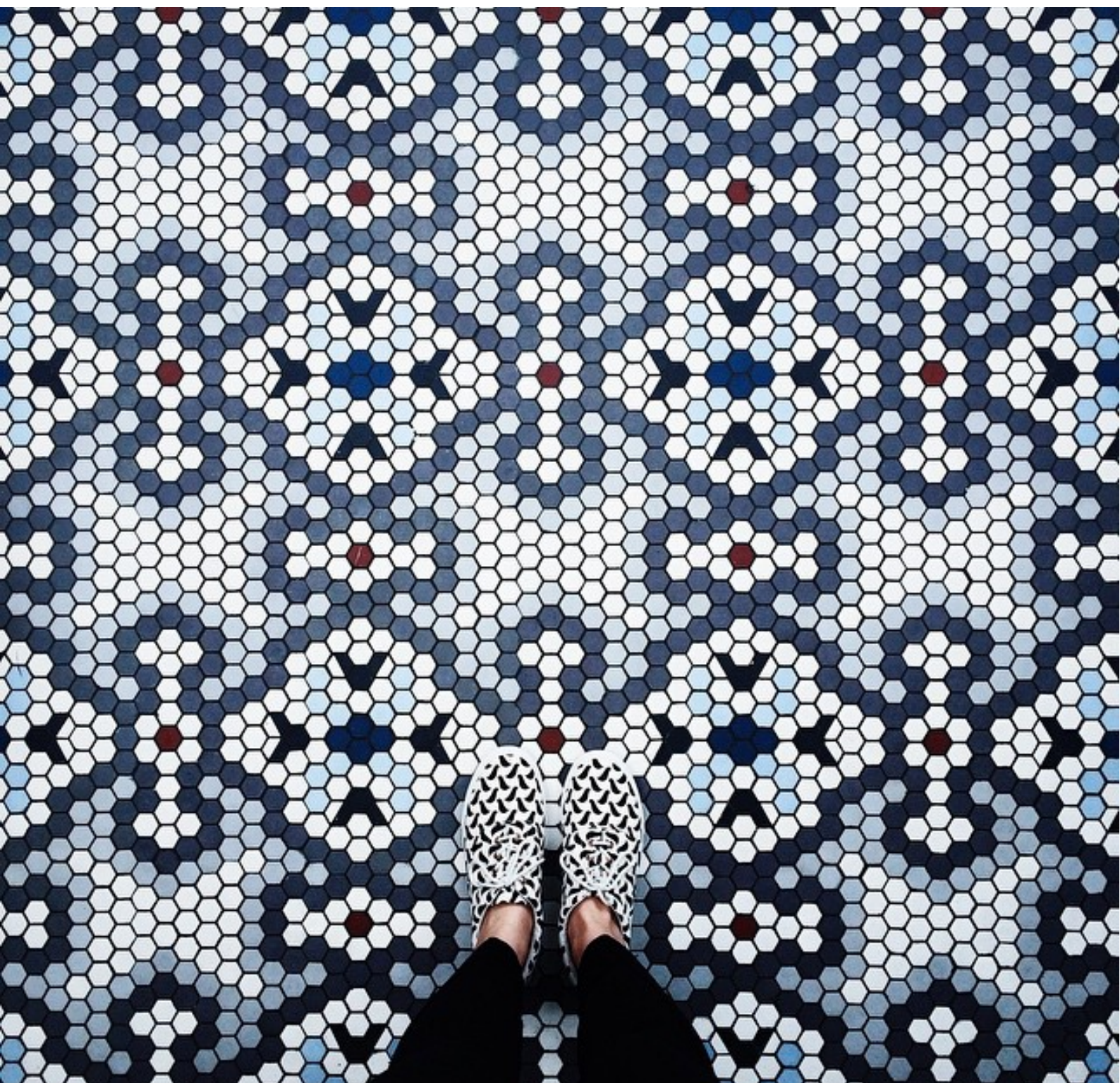




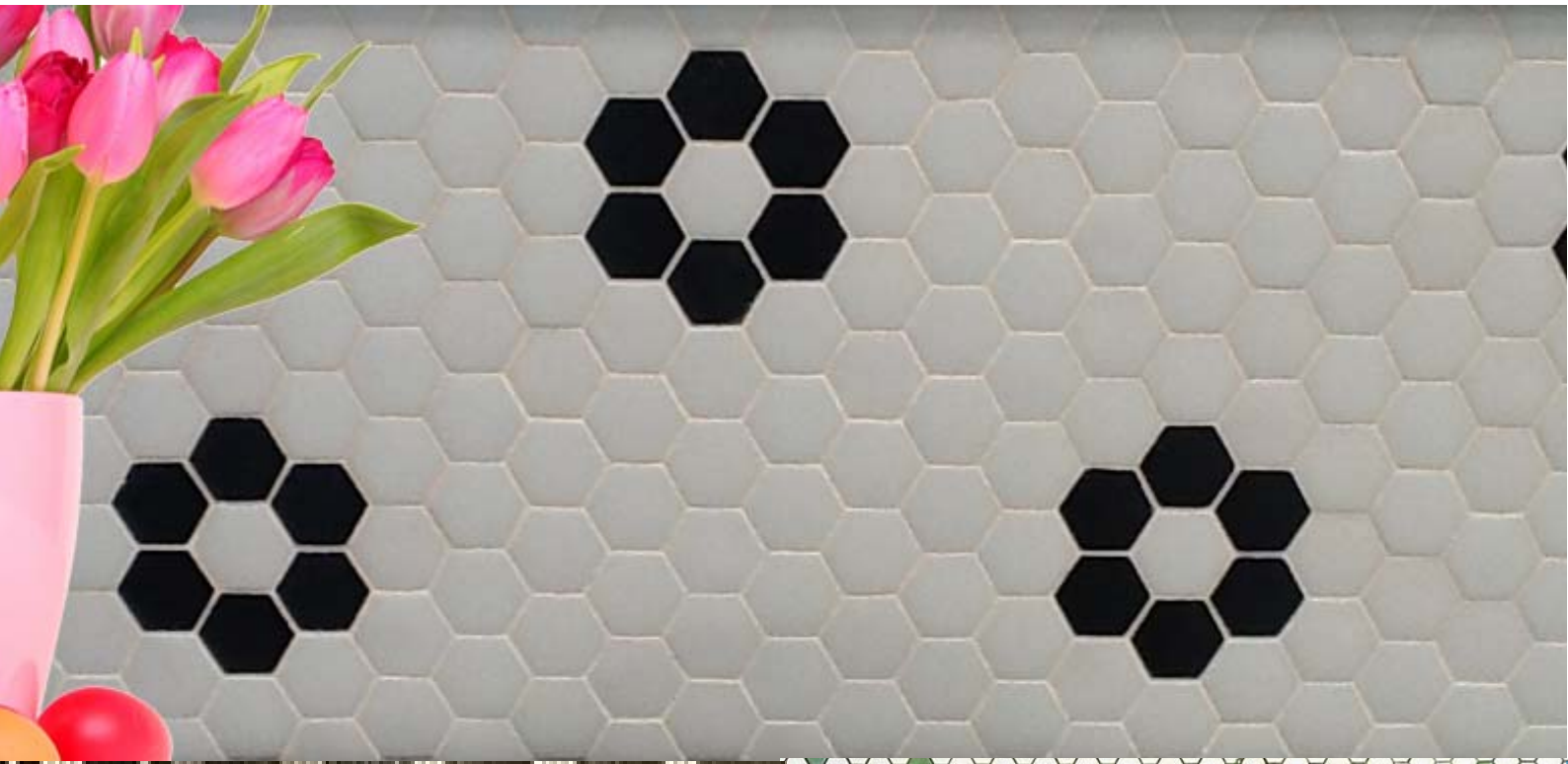




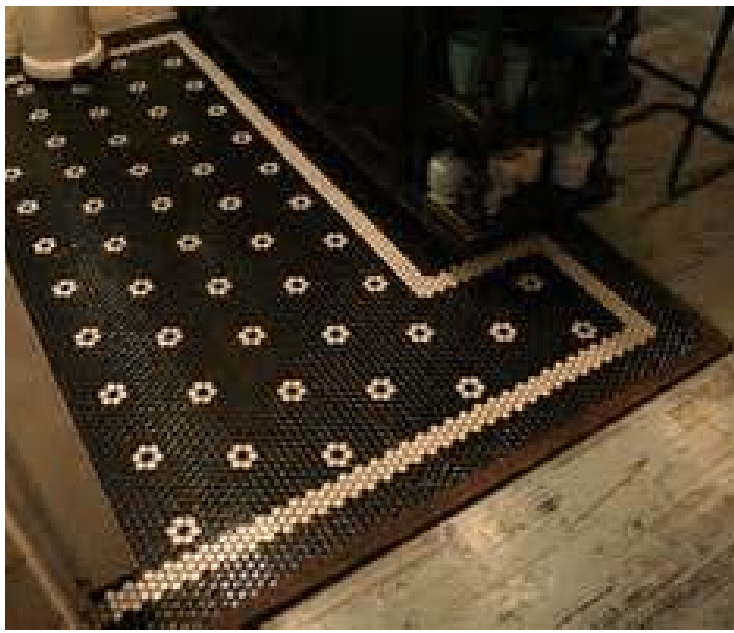


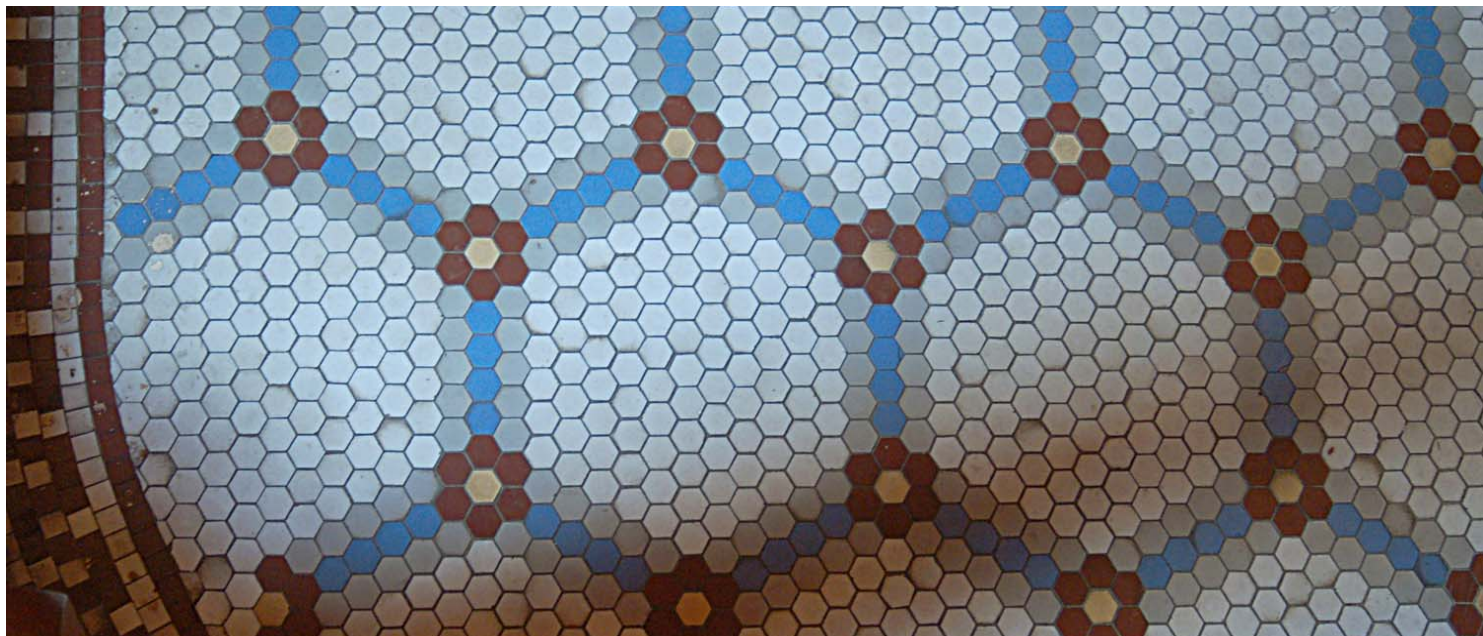


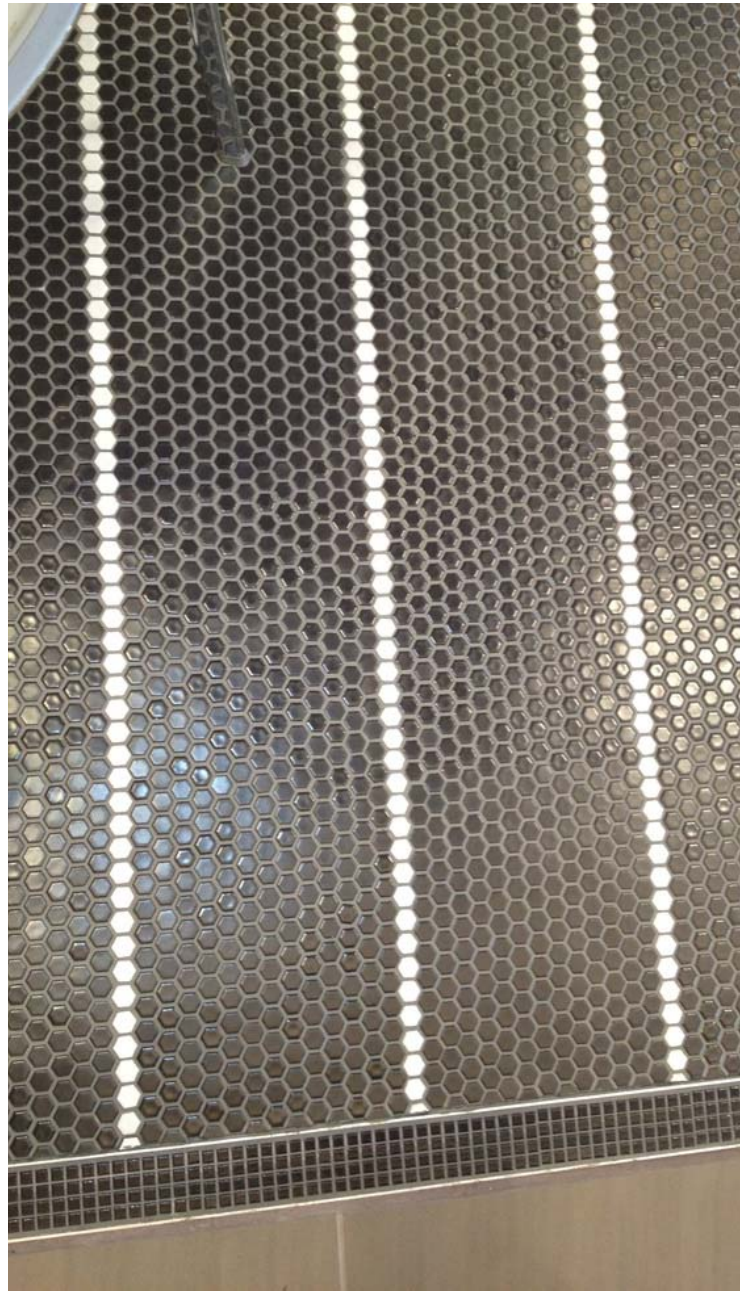
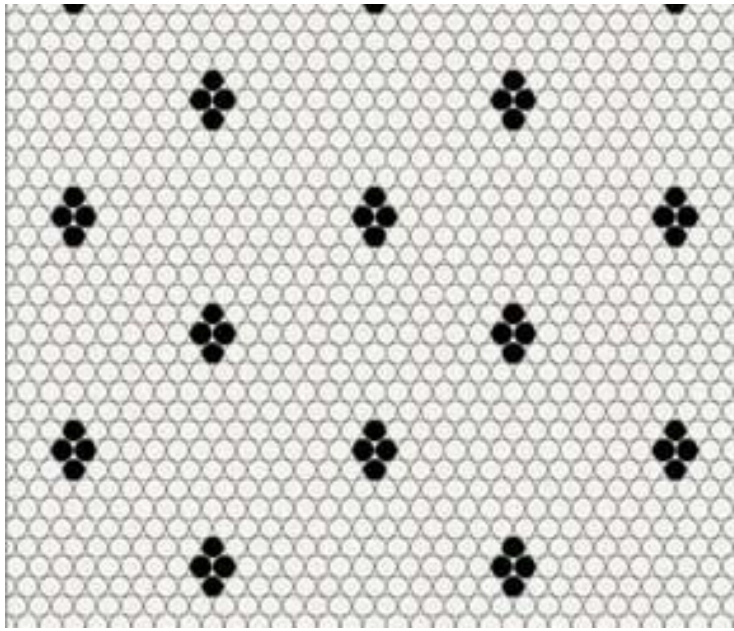
















Paisley

vitrogres



Tartan



En nuestra colección Vitrogres Vintage hemos realizado una intensa labor de recuperación de antiguos diseños de mosaico, algunos de principios del siglo XX.

En estos diseños tiene un protagonismo especial nuestro formato hexagonal, (con la posibilidad ahora de un nuevo tamaño más grande), y el acabado mate. Pero también otros formatos como el Opus Romano 15x15, 25x25, usando también la nueva posibilidad de la colocación en "ladrillo" o a "matajunta".

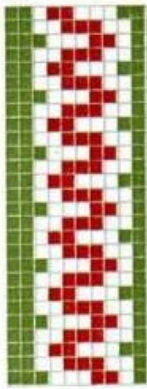
También recuperamos la posibilidad de combinar fondos con diferentes decoraciones, y cenefas.

Después de un intenso trabajo, os acercamos una amplia selección de modelos y posibilidades en Vitrogres Vintage, serie RETRO.

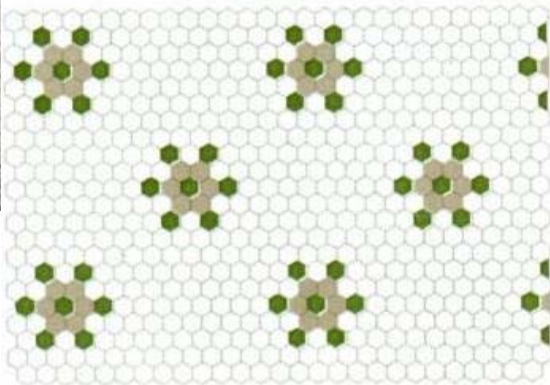
N° 820



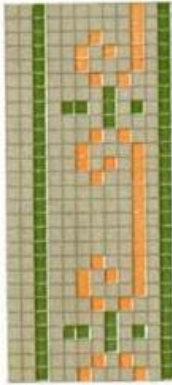
CENEFA D



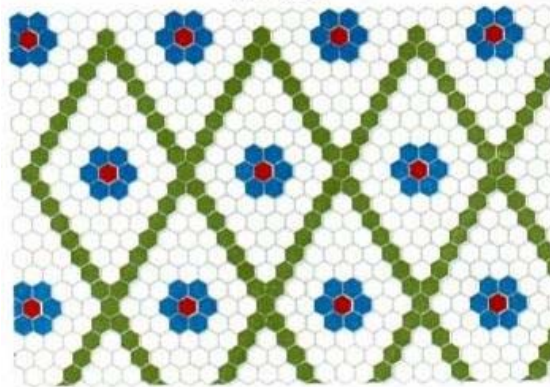
N° 821



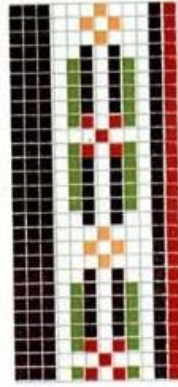
CENEFA E



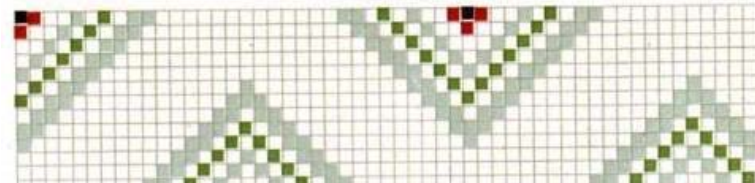
N° 822



CENEFA F



N° 823



In our Vitrogres Vintage collection we have worked intensively to recover ancient mosaic designs, some of the early twentieth century.

In these designs our hexagonal size has a special role (with the possibility now of a new larger size), and our matt finish. But also other sizes such as the Roman Opus 15x15 or 25x25, and also using the new possibility of placement in "brick" or "staggered".

We also recover the possibility to combine backgrounds with different decorations and borders.

After intensive work, we bring closer to you a wide assortment of models and possibilities of Vitrogres Vintage, RETRO series.

ALADDIN

"ALADDIN" MOSAIC FLOOR TILE

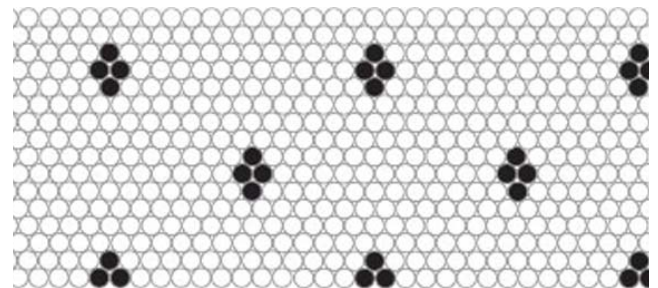
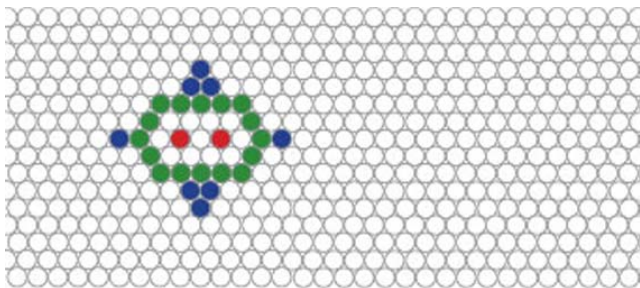
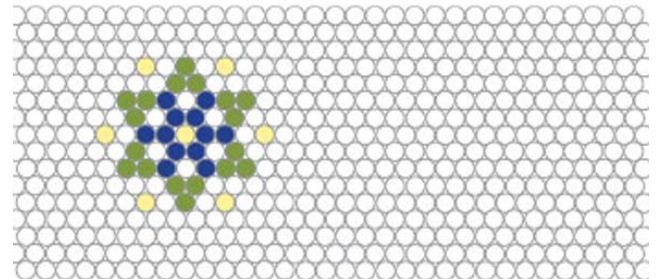
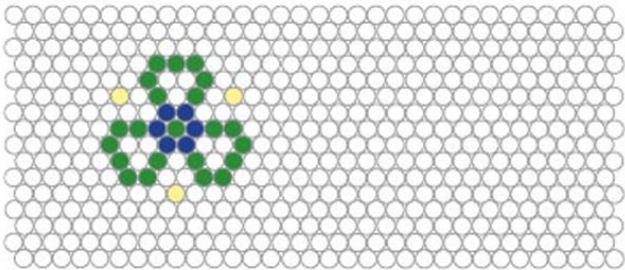
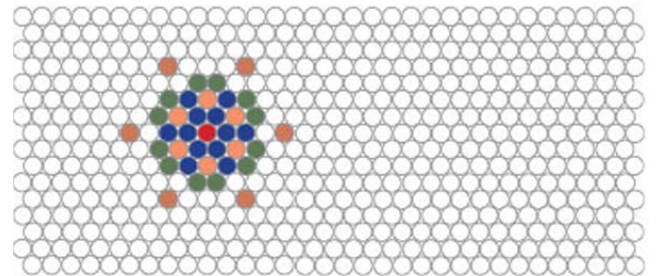
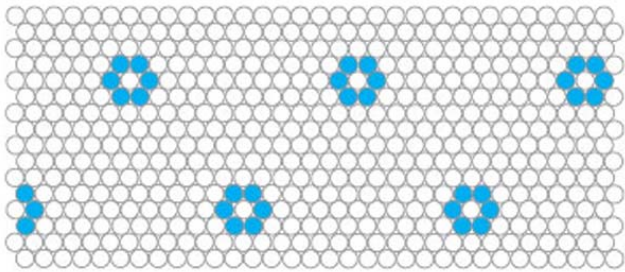
An Ideal Flooring Material for Bathrooms, Kitchens and Store Buildings

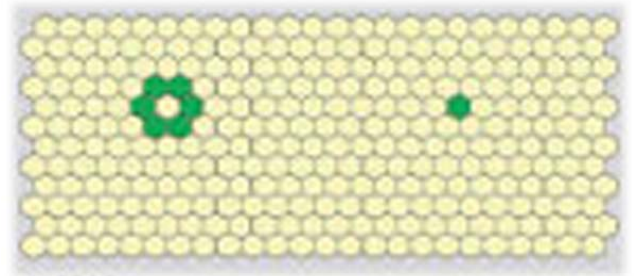
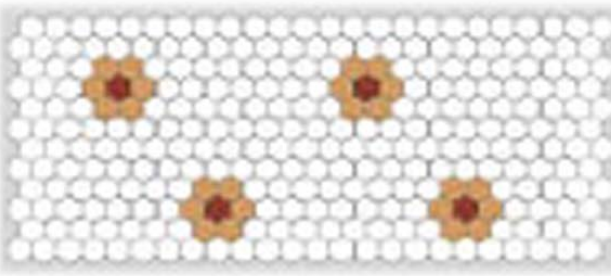
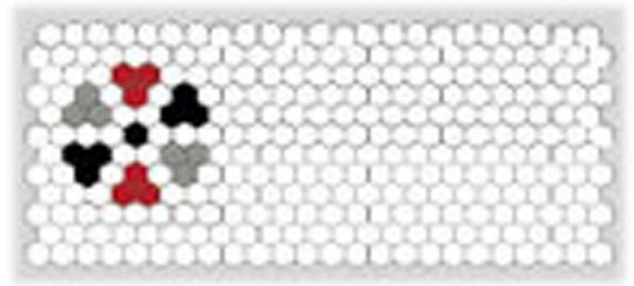
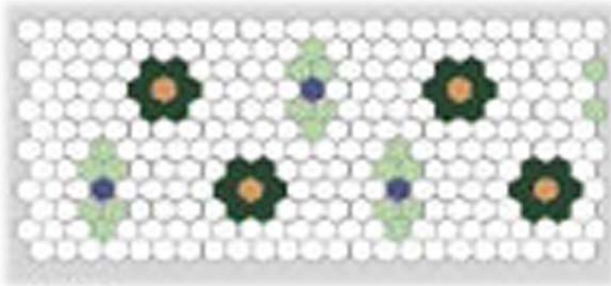
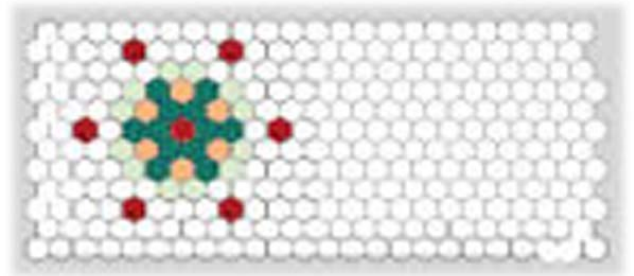
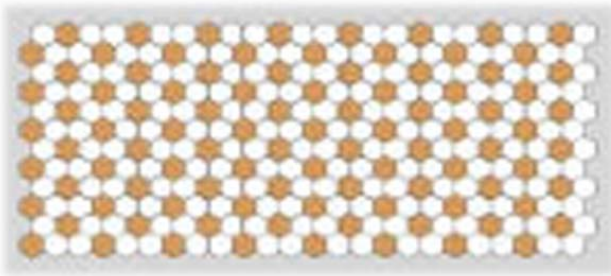
EASY TO LAY. Few people realize how easy it is to lay a Mosaic tile floor. It is, however, very simple, and a tile floor, when once laid over a cement foundation, is practically indestructible. For a bathroom, vestibule, store building or kitchen, a tile floor is not only the best, but the cheapest floor you can buy. It will last a life time, is easily cleaned, and for its cleanliness, is a very desirable floor for a drug or confectionery store or bank, and as a bathroom or kitchen floor, is a delight to any housewife. Send us a diagram of your room, and let us quote you net delivered price on sufficient tile to cover it.

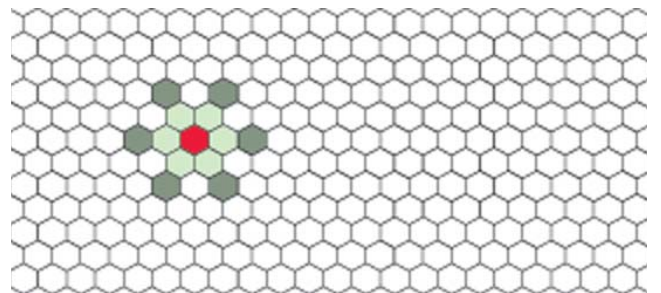
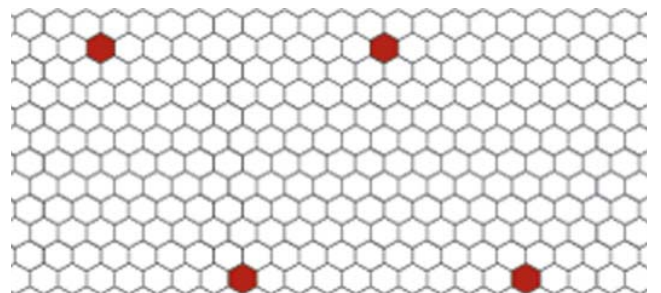
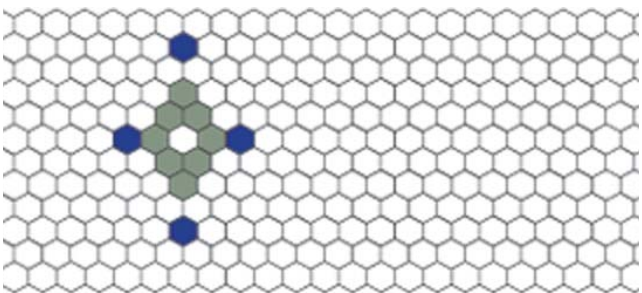
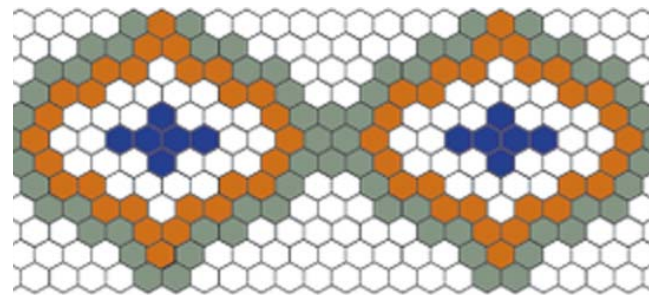
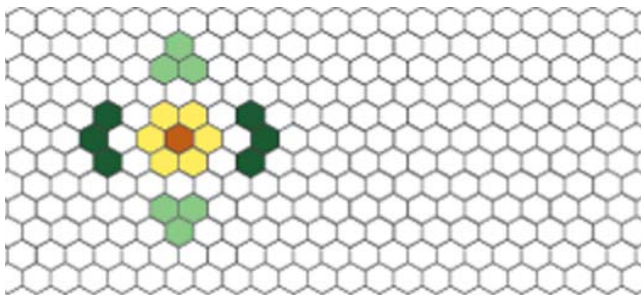
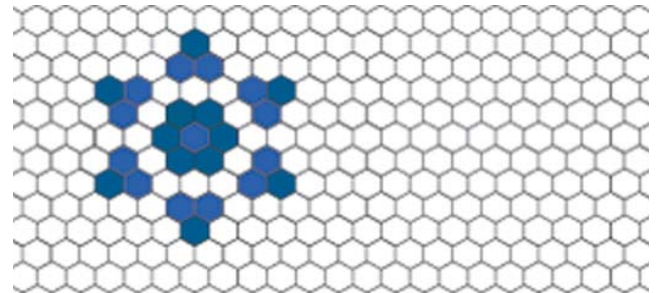
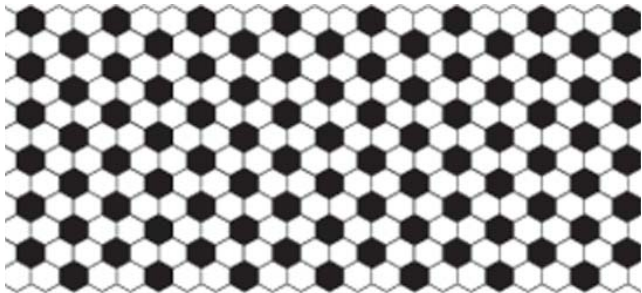
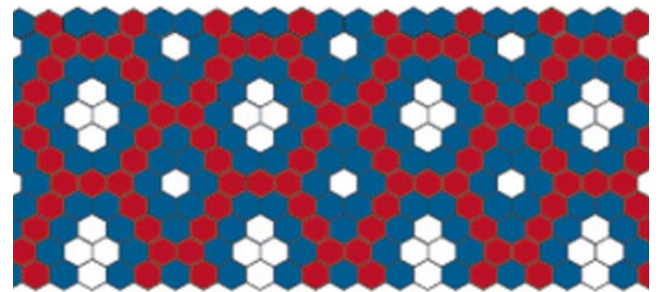
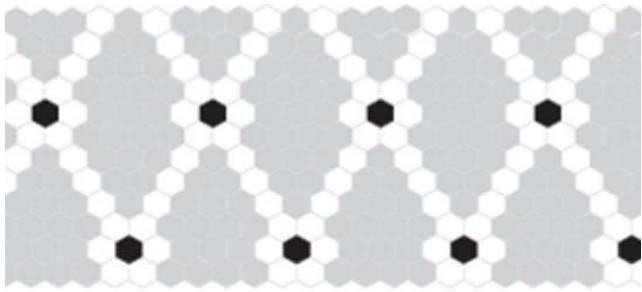
DIRECTIONS FOR LAYING. Make allowance of about three inches below floor level for a tile floor. This allows about 2 1/2 inches for concrete. (Composed of one part cement, two parts sand and two parts gravel) well mixed with water. Allow this to set. Next comes the float, consisting of equal parts of cement and sand. Take a board of proper thickness, which when laid upon your concrete base, will be level with the top of the floor. Lay this strip across the room about two feet from wall and fill with the float. Then lay a strip of tile across the room (paper side up), and pound with a block and hammer until the mortar is visible in the joints, between this. Then move your strip over and lay another course of tile, and so on. When finished, remove paper by wetting thoroughly and peeling it off slowly. Sprinkle tile with white sand and beat it down. Allow to set for two hours, then mix a grouting of pure cement and water (add lamp black for coloring, if desired), fill joints with this and wipe off surplus with a damp soft cloth.

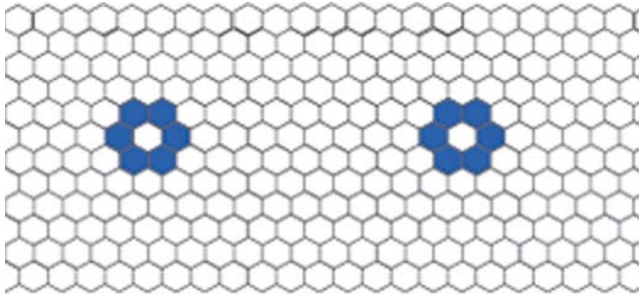
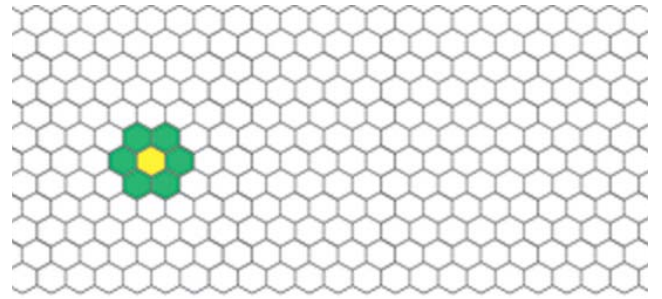
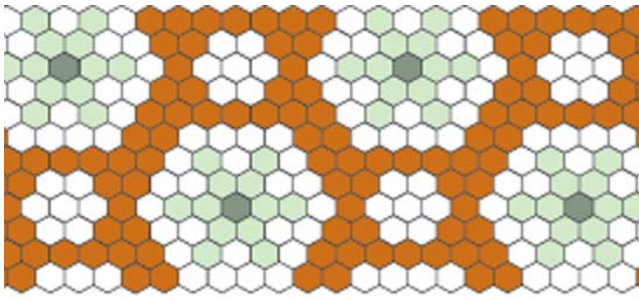
No. 2A-828—Red and white or black and white, Mosaic floor tile, per square foot	19c	No. 2A-842—Red and white or black and white, Mosaic floor tile, per square foot	19c	No. 2A-846—Red and white or black and white Mosaic floor tile, per sq. ft.	19c
No. 2A-830—Blue and white Mosaic floor tile, per square foot	22c	No. 2A-844—Blue and white Mosaic floor tile, per square foot	22c	No. 2A-848—Blue and white Mosaic floor tile, per square foot	22c

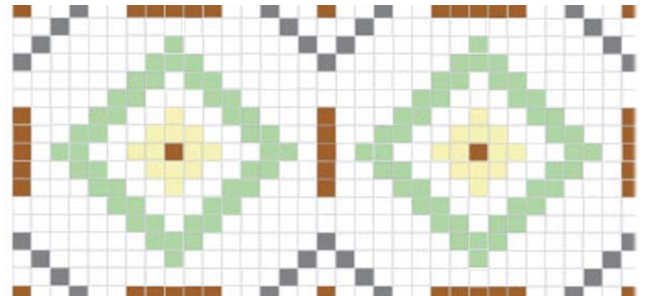
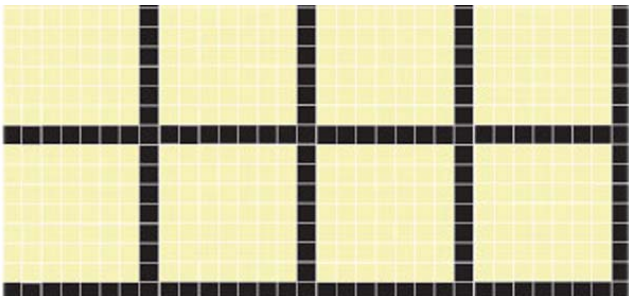
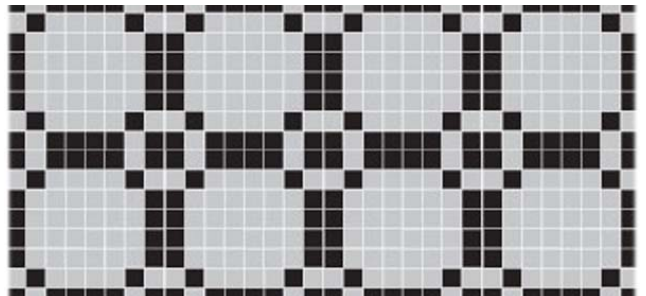
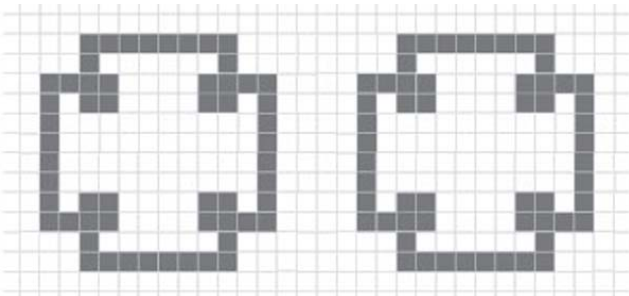
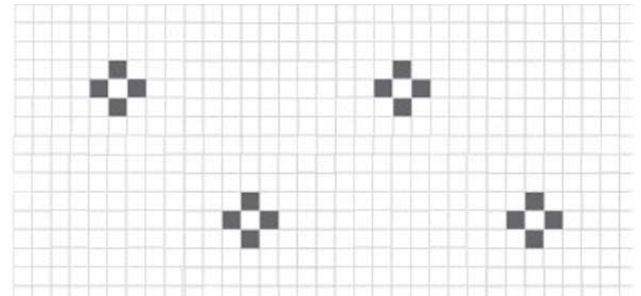
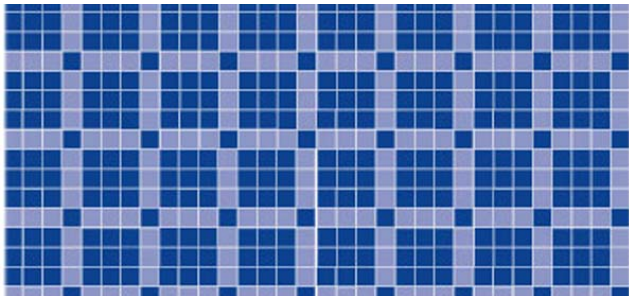
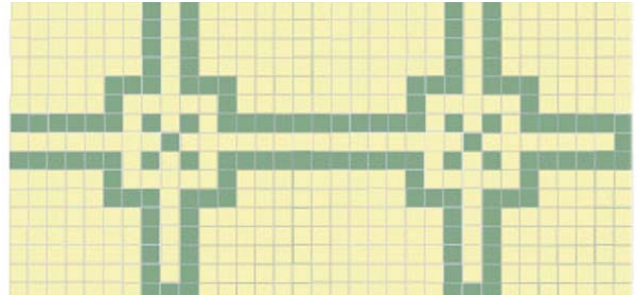
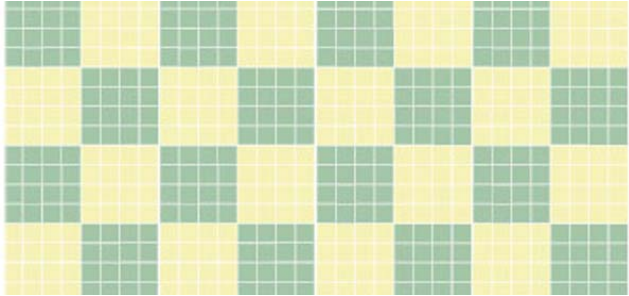
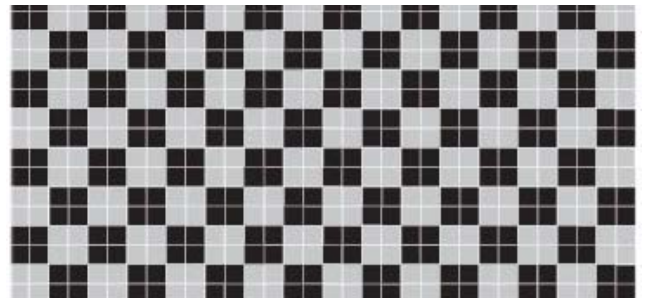
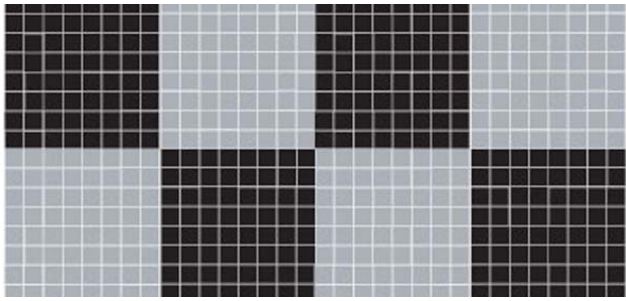
No. 2A-819—Plain White Hexagon Tile, which is used largely for small bathrooms, vestibules, etc., can also be furnished by us at the net price of 18c per square foot. Shipped from our factory in Chicago.

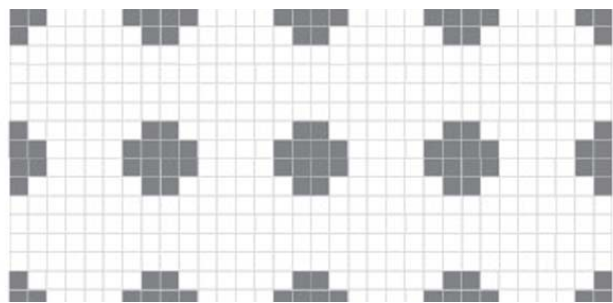
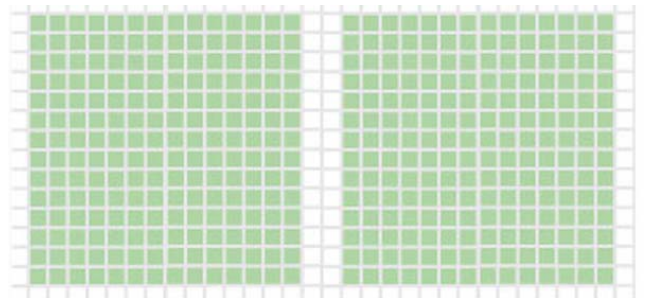
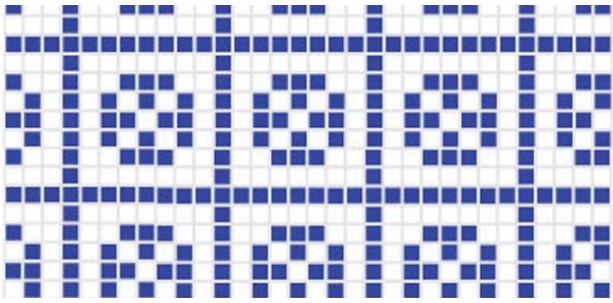


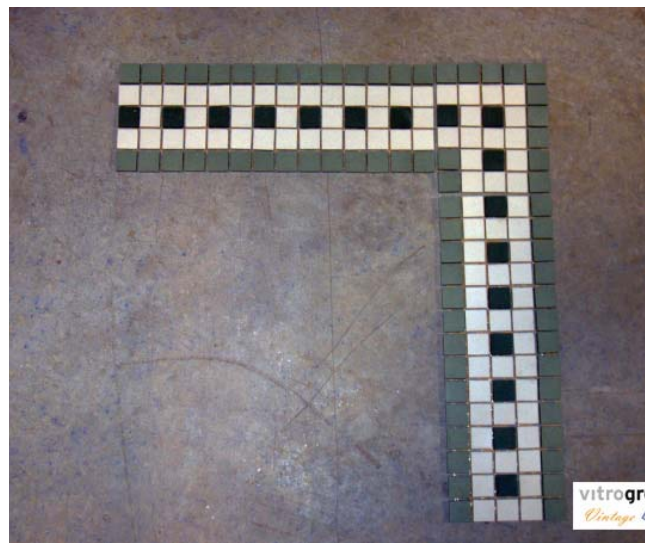


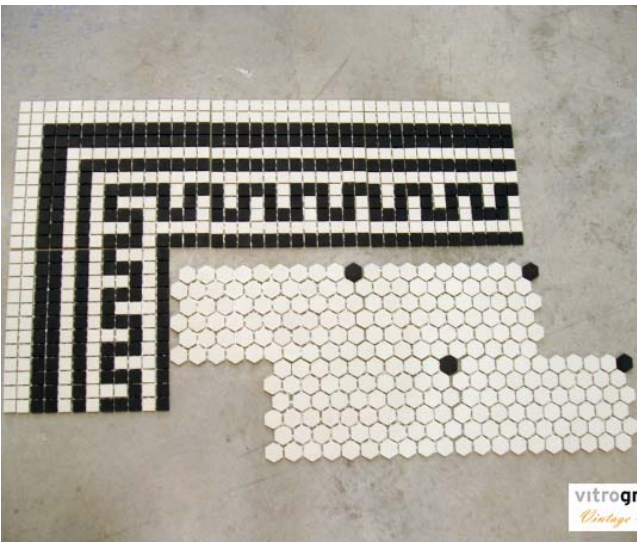
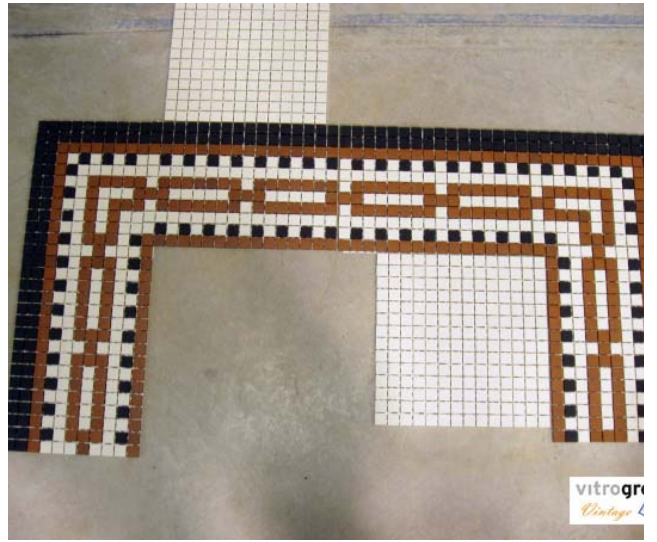
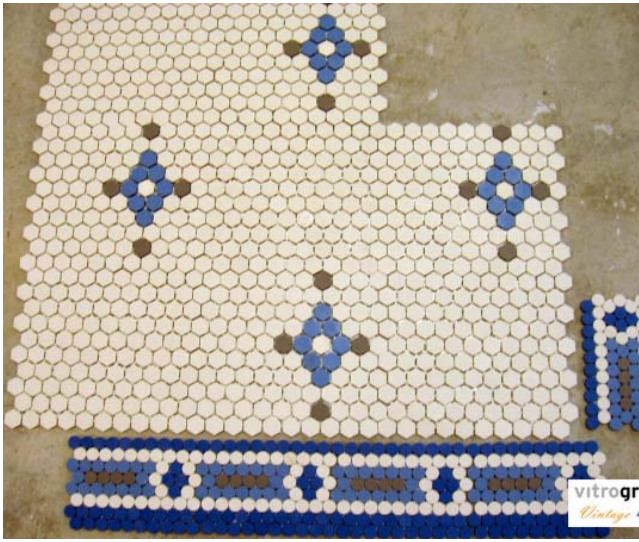


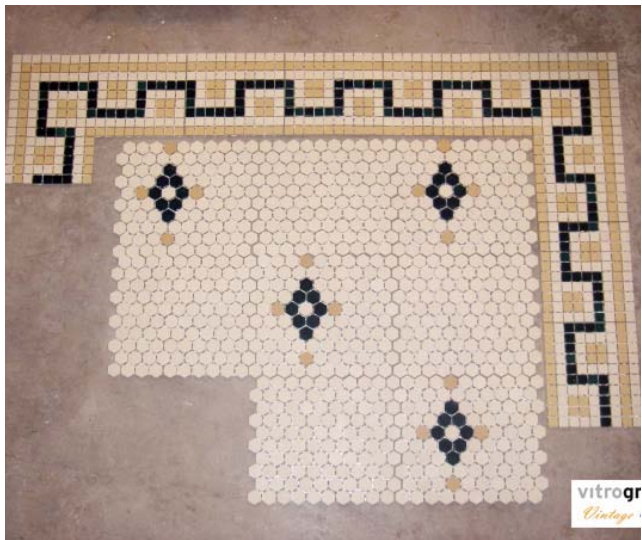


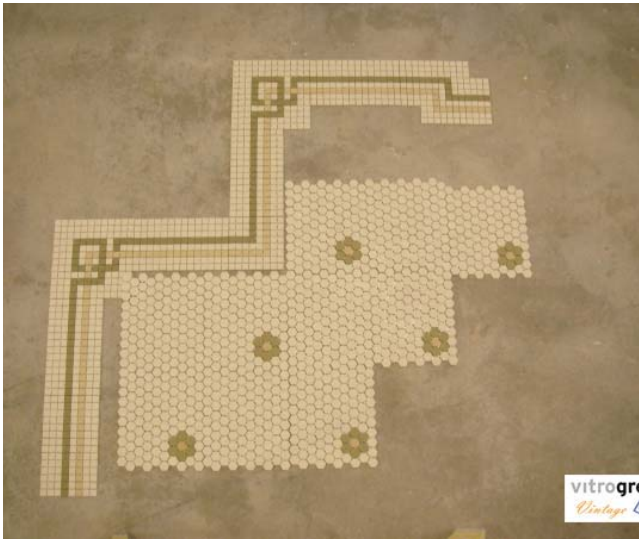


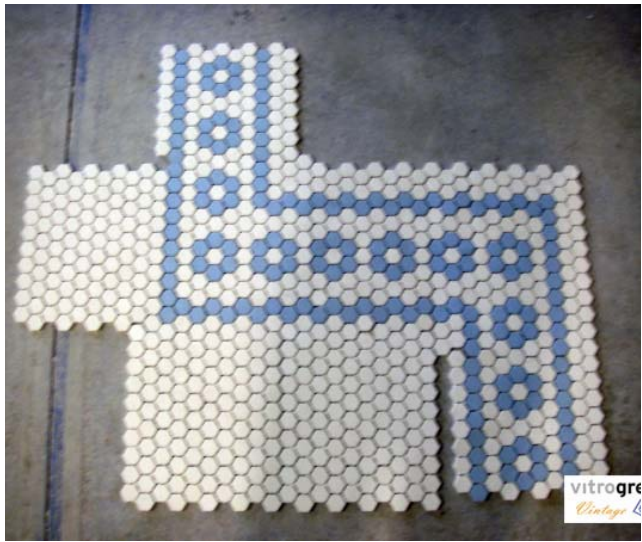


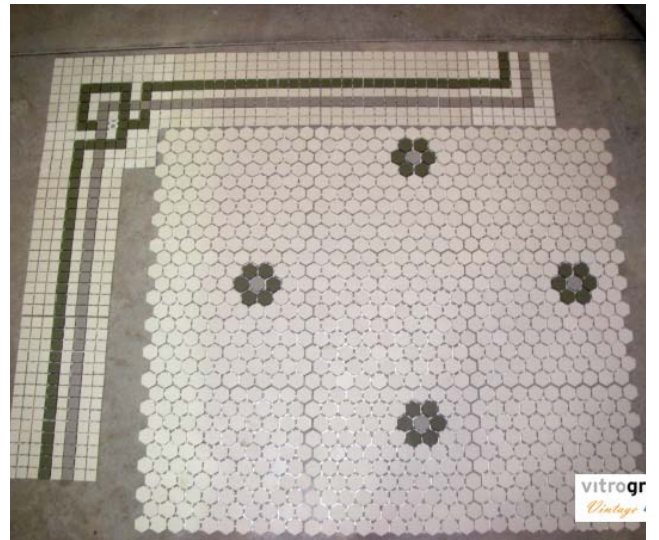
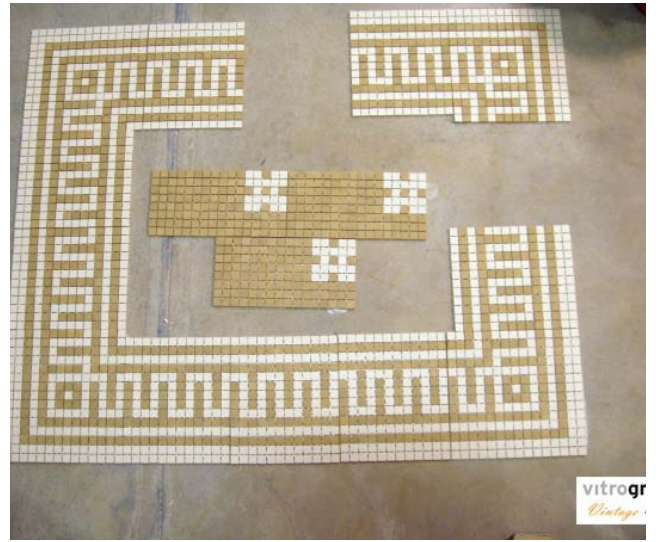
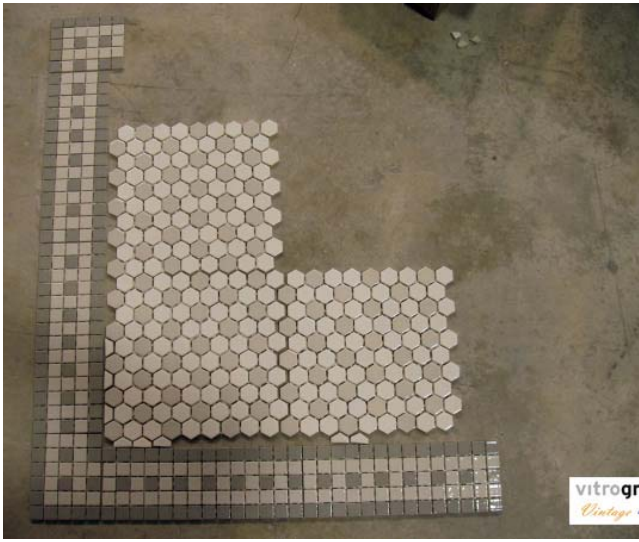


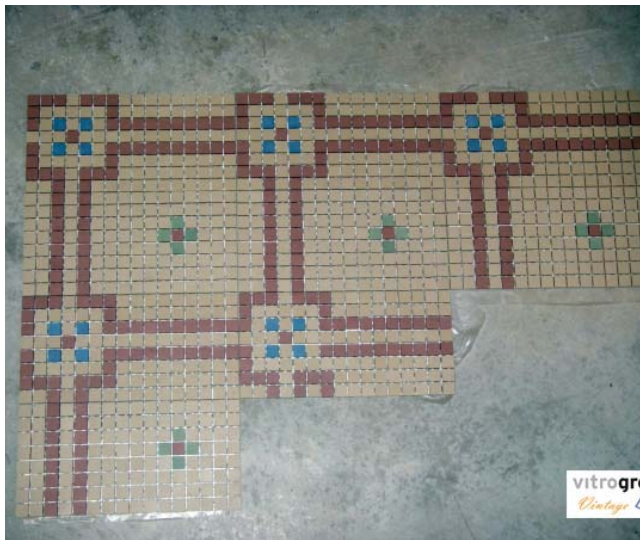


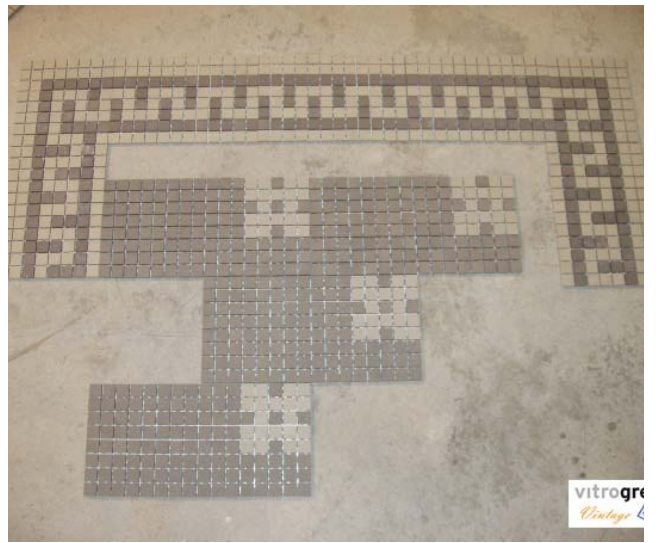
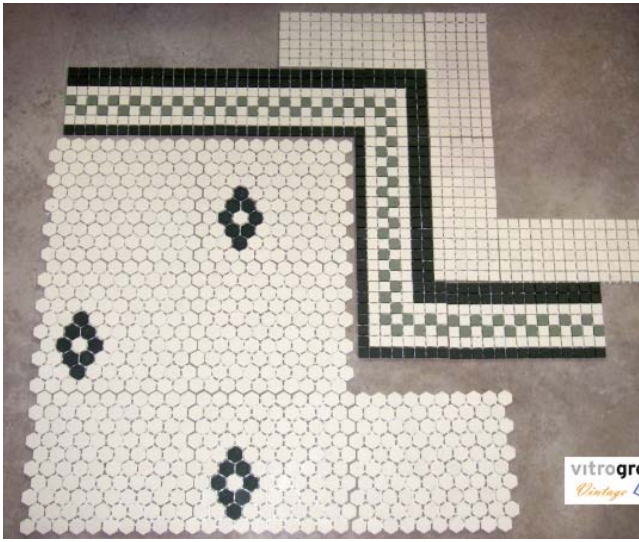




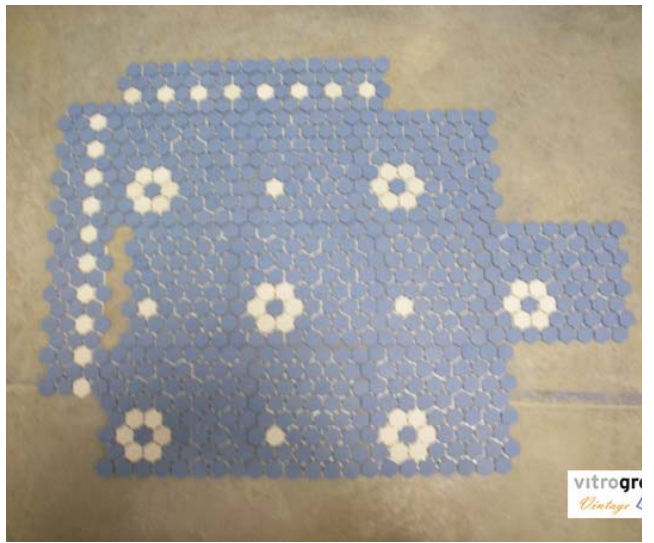














Datos Técnicos / Technical Data

CARACTERÍSTICAS DIMENSIONALES / DIMENSIONAL CHARACTERISTICS

CARACTERÍSTICA TÉCNICA TECHNICAL CHARACTERISTIC	NORMA DE ENSAYO TEST STANDARD	REQUISITOS EXIGIDOS* DEMANDED REQUIREMENTS*	RESULTADO VITROGRES VITROGRES RESPONDS
LONGITUD Y ANCHURA LENGTH AND WIDTH	UNE-EN ISO 10545:2	± 0.5 %	± 0.2 %
GROSOR THICKNESS	UNE-EN ISO 10545:2	± 5 %	± 5 %
RECTITUD DE LOS LADOS WARPAGES OF EDGES	UNE-EN ISO 10545:2	± 0.5 %	± 0.2 %
OCTOGONALIDAD WEDGING	UNE-EN ISO 10545:2	± 0.5 %	± 0.2 %
PLANARIDAD FLATNESS	UNE-EN ISO 10545:2	± 0.5 %	± 0.3 %

CARACTERÍSTICAS FÍSICAS / PHYSICAL CHARACTERISTICS

CARACTERÍSTICA TÉCNICA TECHNICAL CHARACTERISTIC	NORMA DE ENSAYO TEST STANDARD	REQUISITOS EXIGIDOS* DEMANDED REQUIREMENTS*	RESULTADO VITROGRES VITROGRES RESPONDS
ABSORCIÓN DE AGUA WATER ABSORTION	UNE-EN ISO 10545:3	E ≤ 0.5%	E ≤ 0.1%
RESISTENCIA A LA ABRASIÓN SCRATCH RESISTANCE	UNE-EN ISO 10545:7	V	PEI 5 Uso en pavimento de tráfico peatonal intenso PEI 5 For use in high pedestrian traffic areas
RESISTENCIA AL CHOQUE TÉRMICO RESISTANCE TO THE THERMAL SHOCK	UNE-EN ISO 10545:9	Metodo de ensayo Test method	Sin alteración No alteration
RESISTENCIA A LA HELADA FROST RESISTANCE	UNE-EN ISO 10545:12	Exigido Required	Resiste Resist
DUREZA AL RAYADO (MOSH) SCRATCH HARDNESS (MOHS)	EN-UNE 101:1991	Mínimo: 6 Minimun: 6	Mosh 6
RESISTENCIA A LA FLEXIÓN BENDING STRENGTH	UNE-EN ISO 10545:4	≥ 35 n/mm.	66.8 N/mm.

CARACTERÍSTICAS QUÍMICAS / CHEMICAL CHARACTERISTICS

CARACTERÍSTICA TÉCNICA TECHNICAL CHARACTERISTIC	NORMA DE ENSAYO TEST STANDARD	REQUISITOS EXIGIDOS* DEMANDED REQUIREMENTS*	RESULTADO VITROGRES VITROGRES RESPONDS
RESISTENCIA A LOS PRODUCTOS QUÍMICOS (BAJAS CONCENTRACIONES) RESISTANCE TO CHEMICALS (LOW CONCENTRATIONS)	UNE-EN ISO 10545:13	Según especifique fabricante According to manufacturer's classification	GLA - Sin alteración GLA - No alteration
RESISTENCIA A LOS PRODUCTOS QUÍMICOS DE USO DOMÉSTICO Y SALES PARA PISCINA RESISTANCE TO HOUSEHOLD CHEMICALS AND SWIMMING POOL SALTS	UNE-EN ISO 10545:13	GB	GA - Sin alteración GA - No alteration
RESISTENCIA A LAS MANCHAS STAIN RESISTANCE	UNE-EN ISO 10545:14	Clase ≥ 3 Class ≥ 3	Clase 5 Class 5

* NORMA DE REFERENCIA/REFERENCE STANDARD: UNE-EN 14411 ISO 13006



vitrogres



Bespoke Mosaic



Ecoarte S.Coop.

C/Portal de Zurbano nº 7

01013 VITORIA GASTEIZ (SPAIN)

0034 945 042169

www.vitrogres.com